



Check for updates

RESEARCH ARTICLE

Identification and molecular characterization of a novel *Chlamydomonas reinhardtii* mutant defective in chlorophyll biosynthesis [version 1; peer review: 3 approved]

Phillip B Grovenstein, Darryel A Wilson, Cameron G Lennox, Katherine P Smith, Alisha A Contractor, Jonathan L Mincey, Kathryn D Lankford, Jacqueline M Smith, Tashana C Haye, Mautusi Mitra

University of West Georgia, Department of Biology, 1601 Maple Street, Carrollton, GA 30118, USA

v1 First published: 10 Jun 2013, 2:138
<https://doi.org/10.12688/f1000research.2-138.v1>
 Latest published: 29 Jul 2013, 2:138
<https://doi.org/10.12688/f1000research.2-138.v2>

Abstract

The green micro-alga *Chlamydomonas reinhardtii* is an elegant model organism to study all aspects of oxygenic photosynthesis. Chlorophyll (Chl) and heme are major tetrapyrroles that play an essential role in energy metabolism in photosynthetic organisms and are synthesized via a common branched tetrapyrrole biosynthetic pathway. One of the enzymes in the pathway is Mg chelatase (MgChel) which inserts Mg^{2+} into protoporphyrin IX (PPIX, proto) to form magnesium-protoporphyrin IX (MgPPIX, Mgproto), the first biosynthetic intermediate in the Chl branch. MgChel is a multimeric enzyme that consists of three subunits designated CHLD, CHLI and CHLH. Plants have two isozymes of CHLI (CHLI1 and CHLI2) which are 70%-81% identical in protein sequences. Although the functional role of CHLI1 is well characterized, that of CHLI2 is not. We have isolated a non-photosynthetic light sensitive mutant 5A7 by random DNA insertional mutagenesis that is devoid of any detectable Chl. PCR based analyses show that 5A7 is missing the *CHLI1* gene and at least eight additional functionally uncharacterized genes. 5A7 has an intact *CHLI2* gene. Complementation with a functional copy of the *CHLI1* gene restored Chl biosynthesis, photo-autotrophic growth and light tolerance in 5A7. We have identified the first *chli1* mutant of *Chlamydomonas reinhardtii* and in green algae. Our results show that in the wild type *Chlamydomonas* CHLI2 protein amount is lower than that of CHLI1 and the *chli1* mutant has a drastic reduction in CHLI2 protein levels although it possesses the *CHLI2* gene. Our *chli1* mutant opens up new avenues to explore the functional roles of CHLI1 and CHLI2 in Chl biosynthesis and chloroplast to nucleus retrograde signaling in *Chlamydomonas*, which has never been studied before.

Open Peer Review

Approval Status



	1	2	3
version 2			
(update)			
29 Jul 2013	view	view	view
version 1			
10 Jun 2013	view	view	view

1. **David Oppenheimer**, University of Florida, Gainesville, FL, USA
2. **Tatsuru Masuda**, University of Tokyo, Tokyo, Japan
3. **Ruby A. Ynalvez** , Texas A&M International University, Laredo, TX, USA

Any reports and responses or comments on the article can be found at the end of the article.

Associated Research Article

Grovenstein PB, Wilson DA, Lankford KD *et al.* » Identification and molecular characterization of the second *Chlamydomonas* gun4 mutant, gun4-II, F1000Research 2013, 2:142 (<https://doi.org/10.12688/f1000research.2-142.v2>)

Corresponding author: Mautusi Mitra (mmitra@westga.edu)

Competing interests: No competing interests were disclosed.

Grant information: This project was supported by several grants awarded to Dr. Mautusi Mitra. These are: the start-up grant of the University of West Georgia (UWG), the Faculty Research Grant by the UWG College of Science and Mathematics, the Internal Development Grant by the UWG office of Research and Sponsored Project, the Research Incentive grant by the UWG College of Science and Mathematics, the UWG Student Research Assistance Program (SRAP) grant and the UWise-BOR-STEM II grant from UWG. *The funders had no role in study design, data collection and analysis, decision to publish, or preparation of the manuscript.*

Copyright: © 2013 Grovenstein PB *et al.* This is an open access article distributed under the terms of the [Creative Commons Attribution License](#), which permits unrestricted use, distribution, and reproduction in any medium, provided the original work is properly cited. Data associated with the article are available under the terms of the [Creative Commons Zero "No rights reserved" data waiver](#) (CC0 1.0 Public domain dedication).

How to cite this article: Grovenstein PB, Wilson DA, Lennox CG *et al.* **Identification and molecular characterization of a novel *Chlamydomonas reinhardtii* mutant defective in chlorophyll biosynthesis [version 1; peer review: 3 approved]** F1000Research 2013, 2:138 <https://doi.org/10.12688/f1000research.2-138.v1>

First published: 10 Jun 2013, 2:138 <https://doi.org/10.12688/f1000research.2-138.v1>

Introduction

The green micro-alga *Chlamydomonas reinhardtii* possesses a photosynthetic apparatus very similar to that of higher plants, can grow photo-autotrophically and heterotrophically (it can metabolize exogenous acetate as a carbon source) and possesses a completely sequenced genome¹. These attributes make it an elegant model organism to study oxygenic photosynthesis and chloroplast biogenesis^{2,3}. In photosynthetic organisms, tetrapyrroles like Chl and heme are essential for energy metabolism (i.e. photosynthesis and respiration). Biosynthesis of Chl and heme occur via a common branched pathway that involves both nuclear- and chloroplast-encoded enzymes in most photosynthetic organisms⁴. In photosynthetic eukaryotes, 5-aminolevulinic acid (ALA) is synthesized from glutamine through glutamyl-tRNA⁵. Conversion of ALA through several steps yields protoporphyrin IX (PPIX), the last common precursor for both heme and Chl biosynthesis⁵. Ferrochelatase inserts iron in the center of PPIX thus committing it to the heme branch of the pathway. Insertion of Mg²⁺ in PPIX by MgChel leads to Mgproto, the first biosynthetic intermediate in the Chl branch⁶. Magnesium chelatase has three subunits, which are CHLD, CHLH and CHLI⁷. The ATP-dependent catalytic mechanism of the heterotrimeric MgChel complex includes at least two steps⁷⁻⁹: an activation step, followed by the Mg²⁺ insertion⁸. Activation of MgChel with ATP involves CHLD and CHLI while CHLH is required for the chelation step¹⁰. CHLI belongs to the AAA+ family of ATPases. Plants have two isozymes of CHLI1 (CHLI1 and CHLI2) which are 70%–81% identical in protein sequences¹⁰. Although the functional role of CHLI1 is well characterized, that of CHLI2 is not. Most of the data on CHLI comes from studies on *Arabidopsis thaliana* *chli* mutants and the functional significance of CHLI1 and CHLI2 has not been studied in green algae¹⁰⁻¹⁶. In *Arabidopsis* CHLI2 plays a limited role in Chl biosynthesis because of its lower expression level compared to that of CHLI1¹²⁻¹⁵. In *Arabidopsis* the CHLI2 protein amount is lower than that of CHLI1. When overexpressed, CHLI2 can fully rescue an *Arabidopsis chli1chli2* double mutant¹².

We have isolated the first *chli1* mutant of *Chlamydomonas reinhardtii* (5A7) which possesses an intact CHLI2 gene. Transformation of 5A7 with a functional copy of the CHLI1 gene restored Chl biosynthesis. Western analyses show that the CHLI2 protein level is lower than that of CHLI1 in the wild type strain and CHLI2 protein is barely detectable in the mutant strain. In this study, we present our molecular data on the identification of the mutation locus in 5A7 and its complementation.

Materials and methods

Algal media and cultures

Chlamydomonas strains 4A+ (a gift from Dr. Krishna Niyogi (UC, Berkeley), 5A7/*chli1* (generated by our laboratory) and *chli1* complements (generated by our laboratory) were grown either in Tris-Acetate Phosphate (TAP) heterotrophic media or in Sueoka's High Salt (HS) photo-autotrophic media. TAP and HS liquid media and agar plates were prepared in the lab using reagents from Fisher Scientific (Pittsburg, PA) according to the protocol given in Gorman and Levine (1965)¹⁷ and Sueoka (1960)¹⁸, respectively. The 4A+ strain and *chli1* complements were maintained on TAP agar plates and TAP+zeocin (Sigma, St. Louis, MO) plates, respectively under dim light intensities (10–15 $\mu\text{mol photons m}^{-2}\text{s}^{-1}$) at 25°C. The final

zeocin concentration was 15 $\mu\text{g/ml}$. The *chli1* mutant (5A7) was maintained in the dark on TAP 1.5% agar plates containing 10 $\mu\text{g/ml}$ of paromomycin (Sigma, St. Louis, MO). Liquid algal cultures used for RNA and genomic DNA extractions and protein analyses were grown in 100 ml flasks on the New Brunswick Scientific Excella E5 platform shaker (Enfield, CT) at 150 rpm in the dark or in the dim light.

Generation of the 5A7 mutant

The purified pBC1 plasmid from the DH5 α *Escherichia coli* clone harboring the pBC1 plasmid (obtained from Dr. Krishna Niyogi's laboratory at UC, Berkeley) was used for random DNA insertional mutagenesis. This plasmid contains two antibiotic resistance genes: APHVIII and Amp^R (Figure 1). APHVIII confers resistance against the antibiotic paromomycin (Sigma, St. Louis MO) and was used as a selection marker for screening of *Chlamydomonas* transformants. Amp^R was used as a selection marker for screening of *E. coli* clones harboring the pBC1 plasmid. *E. coli* was grown in 1 l of Luria Bertani (LB) broth containing 1% tryptone, 0.5% of yeast extract, 1% NaCl and ampicillin [final concentration of ampicillin: 100 $\mu\text{g/ml}$]. LB reagent was prepared in the laboratory using reagents purchased from Fisher (Pittsburgh, PA). Ampicillin was purchased from Fisher (Pittsburgh, PA). The culture was incubated at 37°C overnight. Plasmid purification from *E. coli* cells was facilitated by Qiagen plasmid mega kit according to the protocol given in the technical manual (Qiagen, Valencia, CA). Once purified from *E. coli*, the circular pBC1 vector was linearized with the restriction enzyme Kpn1 (NEB, Beverly, MA) according to the protocol given in the technical manual. The linearized DNA was purified using a QIAEX II gel extraction kit (Qiagen, Valencia, CA) according to the protocol given in the technical manual. All agarose DNA gel electrophoresis was visualized by BioRad Molecular Imager Gel Doc XR+ (BioRad, Hercules, CA). Transformation of parental strain 4A+ by the linearized pBC1 vector was performed utilizing the glass bead transformation technique described by Kindle *et al.* (1989)¹⁹ and Dent *et al.* (2005)². Transformants were plated onto fresh TAP agar plates containing 10 $\mu\text{g/ml}$ paromomycin (TAP+P) in the dark. Single colonies of mutants were picked and transferred onto fresh TAP+P plates using a numbered grid layout. Screening of photosynthetic and pigment deficient mutants was done by visual inspection and monitoring of growth under different light intensities in heterotrophic, mixotrophic and photo-autotrophic conditions².

Genomic DNA and RNA extraction

4A+, *chli1* complements and 5A7/*chli1* were grown in TAP liquid media in the dark to a cell density of about 5×10^6 cells/ml of the culture. Genomic DNA was purified using a phenol-chloroform extraction method¹⁹. RNA extraction was facilitated by TRIzol reagent from Invitrogen (Carlsbad, CA) following the protocol in the technical manual. DNA and RNA concentrations were measured using a Nanodrop 1000 spectrophotometer from Thermo Fisher Scientific (Wilmington, DE). DNase treatment was performed using Ambion's TURBO DNA-free kit from Invitrogen (Carlsbad, CA) following the protocol in the technical manual to remove genomic DNA from the RNA preparation. Generation of cDNA was performed using Life Technologies Superscript III First-Strand Synthesis System from Invitrogen (Carlsbad, CA) following the protocol in the technical manual.

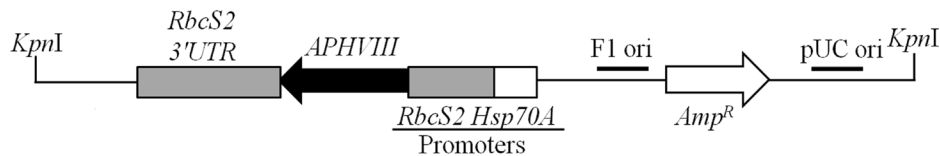


Figure 1. Linearized pBC1 plasmid used for random insertional mutagenesis. The cleavage site of the *KpnI* restriction enzyme, used for linearization of the vector is shown. *APHVIII* is under the control of combo promoters consisting of the promoter of the gene encoding the small subunit of Rubisco (*RbcS2*) and the promoter of the gene encoding the heat shock protein 70A (*Hsp70A*). pBC1 is a phagemid and its F1 origin (F1 ori) and pUC origin (pUC ori) are shown. The size of the plasmid is 4763 bp.

Thermal asymmetric interLaced PCR

TAIL (Thermal Asymmetric InterLaced) PCR was implemented, following the protocol of Dent *et al.* (2005)². This protocol was implemented with one modification of utilizing a non-degenerate primer (AD2) derived from the original degenerate primer (AD) for TAIL PCR as this non-degenerate primer was giving us optimum yield without generating excess nonspecific products. HotStar Taq Plus DNA polymerase kit reagents (Qiagen, Valencia, CA) were used for PCR. The PCR reaction mixture consisted of 1× PCR buffer, 200 μM of each dNTP, 1× Q-solution, 2.5 units of HotStar Taq Plus DNA polymerase, 60 pmoles of the non-degenerate primer AD2 and 5 pmol of the *APHVIII* specific primer. Primers were ordered from IDT (Skokie, IL; Table 1). The non-degenerate primer AD2 has a *T_m* of 46°C while the three *APHVIII* specific primers used had *T_m* ranging from 58°C to 64°C. PCR cycling programs were created using the program given in Dent *et al.* (2005)². TAIL1 PCR product was diluted 10 and 25-fold and 2 μl of the diluted TAIL1 PCR product was used for TAIL2 PCR reactions. The TAIL2 PCR product was gel purified using QIAEX II gel extraction kit (Qiagen, Valencia, CA) according to the protocol given in the technical manual. The purified TAIL2 PCR product was sequenced at the UC, Berkeley DNA Sequencing Facility (Berkeley, CA).

Genomic and reverse transcription PCR

Primers were designed based on genomic DNA sequences available in the *Chlamydomonas* genome database in [Phytozome](#). Amplifications of genomic DNA and cDNA were executed using MJ Research PTC-200 Peltier Thermal Cycler (Watertown, MA). HotStar Taq Plus DNA polymerase kit (Qiagen, Valencia, CA) was used for PCR following the cycling conditions given in the Qiagen

protocol booklet. Annealing temperature was between 55 and 60°C depending on the *T_m* of the primers. Extension time was varied according to the size of the PCR product amplified. Final extension was set at 72°C for ten minutes. All genomic and reverse transcription PCR products were amplified for a total of thirty-five cycles. 50–150 ng of genomic DNA or cDNA templates were used for PCR reactions. For semi-quantitative RT-PCR using *CHLI1* and *CHLI2* gene specific primers, 3 μg of total RNA was converted into cDNA and then 150 ng of cDNA templates were used for RT-PCR. Sequences of primers used for genomic and RT-PCR are shown in Table 2, Table 3 and Table 4.

Cloning of the *CHLI1* cDNA in the pDBle vector

The pDBle vector (obtained from Dr. Saul Purton, University College London, UK) was double-digested with restriction enzymes *EcoRI* and *NdeI* (NEB, Beverly, MA) according to the protocol given in the technical manual. The *CHLI1* cDNA template was amplified using primers given in Table 4. Ligation of the double digested (*NdeI* and *EcoRI* digested) *CHLI1* cDNA and the *NdeI/EcoRI* double-digested pDBle vector was done using the T4 ligase and 1 mM ATP (NEB, Beverly, MA). Chemically competent (CaCl₂ treated) *E. coli* cells were used for transformation. After transformation, *E. coli* cells were plated on LB+ampicillin (100 μg/ml) plates and incubated at 37°C overnight. Single colonies were picked the next day and plasmids were isolated from these clones. Isolated plasmids were double-digested with *EcoRI* and *NdeI* to verify the cloning of the *CHLI1* cDNA. The *CHLI1*-pDBle construct from the selected clone was sequenced by the UC, Berkeley DNA Sequencing Facility (Berkeley, CA). Chromas Lite (<http://tech-nelysium.com.au/>) and BLAST were used to analyze DNA sequences.

Table 1. List of primers used for Thermal Asymmetric InterLaced (TAIL) PCR, verification of TAIL-PCR product and DNA sequencing. These primers were used to generate the data in Figure 3 and Figure 4.

Primer name	Sequence of primer	Location
AD	5'-NTC GWG WTS CNA GC-3'	Random degenerate primer
AD2	5'-ATCGTGTCCAGC-3'	Non-degenerate primer derived from the primer AD
1F	5'-AAA GAC TGA TCA GCA CGA AAC GGG-3'	<i>APHVIII</i> 3'UTR
2F	5'-TAA GCT ACC GCT TCA GCA CTT GAG-3'	<i>APHVIII</i> 3'UTR
2R	5'-CTC AAG TGC TGA AGC GGT AGC TTA-3'	<i>APHVIII</i> 3'UTR
3R	5'-TCT TCT GAG GGA CCT GAT GGT GTT-3'	<i>APHVIII</i> 3'UTR
4R	5'-GGG CGG TAT CGG AGG AAA AGC TG-3'	<i>APHVIII</i> 3'UTR

Table 2. List of primers used for amplifying *CHLI1* and four neighboring genes downstream of *CHLI1*. These primers were used to generate the data in Figure 6A. The gene loci in Phytozome (<http://www.phytozome.net/>) are: *CHLI1* (Cre06.g306300), *UP1* (Cre06.g306250), *UP2* (Cre06.g306200), *UP3* (Cre06.g306150) and *UP4* (Cre06.g306100).

Primer name	Sequence of primer	Gene
CHLI1AF	5'-ACTACGACTTCCGCGTCAAGATCA-3'	<i>CHLI1</i>
CHLI1BR	5'-CATGCCGAACACCTGCTTGAAGAT-3'	<i>CHLI1</i>
PB138	5'-ATGACCGTAACGCTGCGTAC-3'	<i>UP1</i>
PB139	5'-CGTGAACGACAGTGTGAGCG-3'	<i>UP1</i>
PB132	5'-AAGGGCATCAGCTACAAGGTC-3'	<i>UP2</i>
PB133	5'-GGCATCGAGGATGTATTGGTTG-3'	<i>UP2</i>
UP3F	5'-GGC ACA CAA GCG TGA TTT TCT GG-3'	<i>UP3</i>
UP3R	5'-CGG CAC GTC GAA GAC AAA CT-3'	<i>UP3</i>
UP4F	5'-CTT TGA CCT GCA AAG AGA GAA AGC G-3'	<i>UP4</i>
UP4R	5'-CAC CAC CTT GAT GCC CTT GAG-3'	<i>UP4</i>

Table 3. List of primers used for amplifying *CHLI1*, four neighboring genes upstream of *CHLI1* and the actin gene and transcript. These primers were used to generate the data in Figure 6B and 6C. The gene loci in Phytozome (<http://www.phytozome.net/>) are: *CHLI1* (Cre06.g306300), *FDX3* (Cre06.g306350), *AMT* (g7098), *UP5* (Cre06.g306450) and *UP6* (Cre06.g306500) and *Actin* (Cre13.g603700).

Primer name	Sequence of primer	Gene
CHLI1AF	5'-ACTACGACTTCCGCGTCAAGATCA-3'	<i>CHLI1</i>
CHLI1BR	5'-CATGCCGAACACCTGCTTGAAGAT-3'	<i>CHLI1</i>
PB134	5'-CTGGAGCGCACCTTTATGAAG-3'	<i>AMT</i>
PB135	5'-AGTGGAACAGTTCTCGATGAC-3'	<i>AMT</i>
PB132	5'-AAGGGCATCAGCTACAAGGTC-3'	<i>FDX3</i>
PB133	5'-GGCATCGAGGATGTATTGGTTG-3'	<i>FDX3</i>
UP5F	5'-GGG CAA CTG GAG CTT TGG C-3'	<i>UP5</i>
UP5R	5'-CGT CTA TGT GCG CCA CGT C-3'	<i>UP5</i>
UP6F	5'-GCA ACT GGA GCT TCG GCG-3'	<i>UP6</i>
UP6R	5'-CGT AGG CGC CAA ACA CCG-3'	<i>UP6</i>
F2	5'-ACGACACCACCTTCAACTCCATCA-3'	<i>Actin</i>
R2	5'-TTAGAAGCACTTCCGGTGCACGAT-3'	<i>Actin</i>

Table 4. List of primers for amplifying *CHLI* transcripts and complement testing. These primers were used in the experiments that generated the data in Figure 7 and Figure 10 and also used for *CHLI1* cDNA amplification for cloning.

Primer name	Sequence of primer	Gene/purpose
CHLI1CR	5'-TTGACCCCTTGACACGAACCAACC-3'	<i>CHLI1</i>
CHLI1BR	5'-CATGCCGAACACCTGCTTGAAGAT-3'	<i>CHLI1</i>
CHLI1AF	5'-ACTACGACTTCCGCGTCAAGATCA-3'	<i>CHLI1</i>
CHLI2BF	5'-TGACGCATTTGTGGACTCGTGCAA-3'	<i>CHLI2</i>
CHLI2CR	5'-CACACTTACAGTTCACGCAGCAA-3'	<i>CHLI2</i>
CHLI1XF	5'-GGAATTCCATATGGCCTGAACATGCGTGTTC-3'	<i>CHLI1</i> cDNA amplification for cloning
CHLI1XR	5'-CCGGAATTCTTACTCCATGCCGAACACCTGCTT-3'	<i>CHLI1</i> cDNA amplification for cloning
PsaDF1	5'-CCACTGCTACTCACAACAAGCCCA-3'	Complementation testing

Generation and screening of *chlI1* complements

Complementation of the *chlI1* was performed utilizing the glass bead transformation technique described by Kindle *et al.* 1989²⁰. 2 µg of the linearized *CHLI1-pDBle* was used to complement *chlI1*. Transformed cells were plated onto fresh TAP plates containing 15 µg/ml zeocin (Z) and placed in the dark at 25°C. Single colonies were picked and transferred onto fresh TAP+Z plates using a numbered grid template for screening of potential *chlI1* complements. Screening of *chlI1* complements was done by visual inspection of green coloration and monitoring growth of light adapted complement strain cells either on TAP in the dark or in the dim light or HS plates under medium light (300 µmol photons m⁻²s⁻¹).

Cellular protein analysis

Chlamydomonas cells from different strains grown in TAP in the dark were harvested, washed twice with fresh medium and resuspended in TEN buffer (10 mM Tris-HCl, 10 mM EDTA and 150 mM NaCl; pH 8). Protein concentrations of samples were determined by the method of Lowry *et al.* (1951)²¹ with bovine serum albumin as standard. Gel lanes were either loaded with an equal amount of Chl (4 µg Chl) or with 40 µg of protein. Resuspended cell suspension was mixed in a 1:1 ratio with the sample solubilization buffer SDS-urea buffer (150 mM Tris-HCl, pH 6.8; 7% w/v SDS; 10% w/v glycerol; 2 M urea, bromophenol blue and 10% β-mercaptoethanol) and were incubated at room temperature for about thirty minutes, with intermittent vortexing. The sample solubilization buffer was prepared according to the protocol of Smith *et al.* (1990)²² using reagents from Fisher (Pittsburgh, PA). After incubation, the solubilized protein samples were vortexed and spun at a maximum speed of 20,000 g in a microcentrifuge for five minutes at 4°C. The soluble fraction was loaded on a “any kD™ Mini-PROTEAN® TGX™ Precast Gel” (BioRad, Hercules, CA) and SDS-PAGE analysis was performed according to Laemmli (1970)²³ using a Page Ruler prestained or unstained protein ladder (Fermentas, Glen Burnie, Maryland) at a constant current of 80 V for 2 hours. Gels were stained with colloidal Coomassie Gel code blue stain reagent (Thermo Fisher Scientific, Rockford, IL) for protein visualization.

Western analysis

Electrophoretic transfer of the SDS-PAGE resolved proteins onto an Immobilon P-PVDF membrane (Millipore, Billerica, MA) was carried out for 2 hours at a constant current of 400 mA in the transfer buffer (25 mM Tris, 192 mM glycine and 20% methanol). The CHLI1 polyclonal antibody was raised in rabbit against the full length *Arabidopsis thaliana* CHLI1 mature protein that lacks the predicted transit peptide²⁴. This antibody is a gift from Dr. Robert Larkin (Michigan State University). CHLI1 primary antibodies were diluted to a ratio of 1:2,000 before being used as a primary probe. The secondary antibodies used for Western blotting were conjugated to horseradish peroxidase (Pierce protein research product, Thermo Fisher Scientific, Rockford, IL) and diluted to a ratio of 1:20,000 with the antibody buffer. Western blots were developed by using the Supersignal West Pico chemiluminescent substrate kit (Pierce protein research product, Thermo Fisher Scientific, Rockford, IL).

Cell counts and chlorophyll extraction

Cell density (number of cells per ml of the culture) was calculated by counting the cells using a Neubauer ultraplane hemacytometer

(Hausser Scientific, Horsham, PA). Pigments from intact cells were extracted in 80% acetone and cell debris was removed by centrifugation at 10,000 g for 5 minutes. The absorbance of the supernatant was measured with a Beckman Coulter DU 730 Life science UV/Vis spectrophotometer (Brea, CA). Chl *a* and *b* concentrations were determined by Arnon (1949)²⁵ equations, with corrections as described by Melis *et al.* (1987)²⁶.

Results

Generation and identification of the mutant 5A7

Mutant 5A7 was generated by random insertional mutagenesis of the *Chlamydomonas reinhardtii* wild type strain 4A+ (137c genetic background). 5A7 lacks detectable chlorophyll, appears yellowish-brown in color and grows only under heterotrophic conditions in the dark or in the dim light in the presence of acetate in the growth media (Figure 1). It is incapable of photosynthesis and is sensitive to light intensities higher than 20 µmol photons m⁻²s⁻¹ (Figure 2).

Molecular characterization of the mutation in 5A7

The linearized plasmid pBC1 was used to generate 5A7 (Figure 1). To find the insertion of the *APHVIII* end of the plasmid in 5A7, a modified TAIL (Thermal Asymmetric InterLaced) PCR method was used. Figure 3A shows the position of the vector specific TAIL PCR primers and also shows the arbitrary position of the random non-degenerate primer. A 850 bp DNA product from TAIL2 PCR was purified from the agarose gel (Figure 3B, Table 1). This purified DNA product was used for PCR using internal primers specific to the 3'UTR (UnTranslated Region) of the *APHVIII* gene. The PCR results confirmed that the 850 bp DNA product contains the 3'UTR of the *APHVIII* gene (Figure 3C). Sequencing of the 850 bp TAIL2 PCR product revealed that the *APHVIII* end of the plasmid has been inserted in the fourth exon of a hypothetical gene which we have named as *UP6* (Figure 4). *UP6* (Cre06.g306500) is located on chromosome 6.

Figure 5 shows a schematic map of the *UP6* locus with its eight neighboring genes *UP4* (Cre06.g306100), *UP3* (Cre06.g306150), *UPI* (Cre06.g306250), *UP2* (Cre06.g306200), *CHLI1* (Cre06.g306300), *FDX3* (Cre06.g306350), *AMT* (g7098) and *UP5* (Cre06.g306450). It is to be noted that we have named all of these genes arbitrarily for our study except for the *CHLI1* and *FDX3* genes, which were annotated in the *Chlamydomonas* genome database. Readers are requested to identify these unknown genes by the gene locus number (Cre or g number) in the [Phytozome database](#). PCR analyses with the genomic DNA of 4A+ and 5A7 were performed using primers specific to four neighboring genes upstream of the *CHLI1* (including *UP6*) and four neighboring genes downstream of the *CHLI1* locus (Table 2 and Table 3; Figure 5A and 5B). PCR analyses revealed that all eight genes neighboring the *CHLI1* locus were deleted or displaced from their native location (Figure 5A and 5B). *UP5* primers gave nonspecific multiple products in 5A7 (Figure 5B). The first two exons of *UP6* are present in the 5A7 genome as the *UP6* primers spanning the first and the second exon, gave similar genomic DNA PCR product of the expected size as in the 4A+ lane (Figure 5B). Reverse transcription (RT-PCR) analyses using the same *UP6* primers on 5A7 and 4A+ cDNA did not yield a PCR product in 5A7 unlike that in 4A+ (Figure 5C; Table 3). This shows that the insertion of the plasmid in the fourth exon of *UP6* in 5A7 has hampered the transcription of the *UP6* gene.

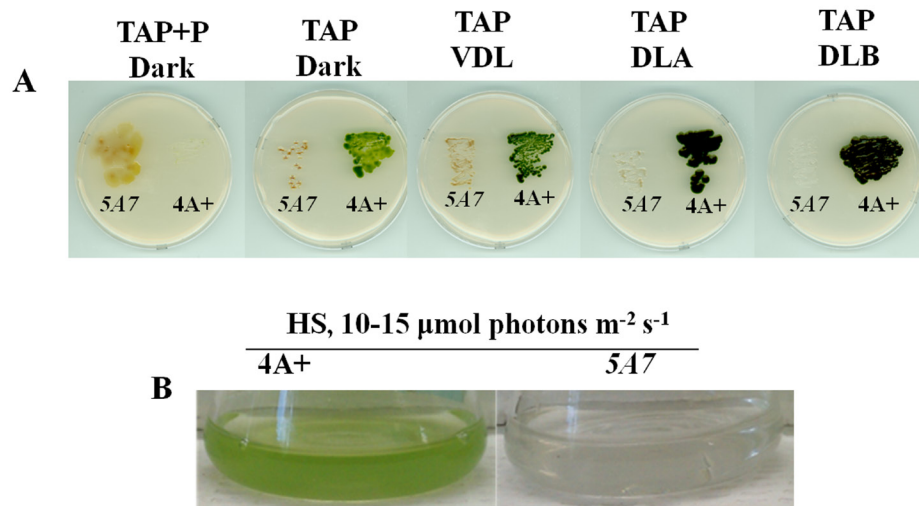


Figure 2. Growth phenotype of 5A7. (A) This figure shows the phenotypic difference of 5A7 compared to the parental strain, 4A+ on heterotrophic/mixotrophic agar media (TAP) plates under five different light conditions: dark + paromomycin (P), dark, very dim light (VDL, 2–4 $\mu\text{mol photons m}^{-2}\text{s}^{-1}$), dim light A (DLA, 10–15 $\mu\text{mol photons m}^{-2}\text{s}^{-1}$) and dim light B (DLB, 20–25 $\mu\text{mol photons m}^{-2}\text{s}^{-1}$). (B) This figure shows the growth phenotype of 5A7 in liquid photo-autotrophic media (HS) under dim light (DL = 10–15 $\mu\text{mol photons m}^{-2}\text{s}^{-1}$).

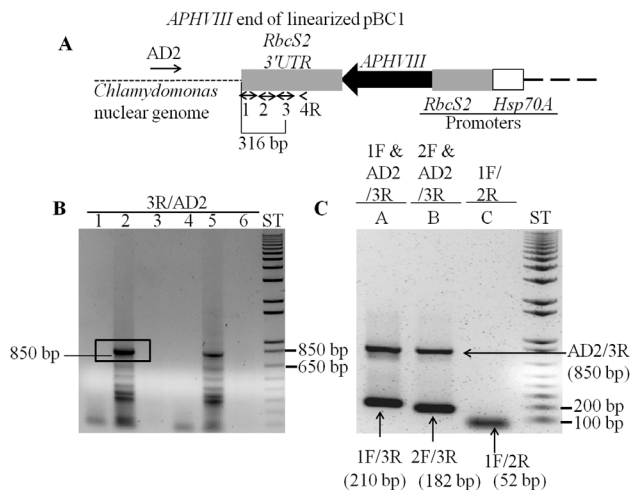


Figure 3. Locating the APHVIII flanking genomic sequence in 5A7. (A) A diagram showing a truncated pBC1 illustrating the APHVIII end of the linearized pBC1 vector. Primers used for PCR are shown by numbered black arrows. Thermal Asymmetric InterLaced 1 (TAIL1) PCR was performed using primer 4R and AD2. (B) TAIL2 PCR was performed using primer 3R and AD2. Lanes 1 and 4 are zero DNA lanes; in lane 2, a 10-fold diluted TAIL1 PCR product was used for TAIL2 PCR; in lane 5, a 25-fold diluted TAIL1 PCR product was used for TAIL2 PCR; lanes 3 and 6 are blank lanes. The 850 bp product used for DNA sequencing is highlighted. (C) Gel purified DNA product (850 bp) from the TAIL2 PCR was used to verify if the product was specific to the APHVIII gene. F and R stand for forward and reverse primers, respectively. AD2 is a non-degenerate primer. PCR primer names are labeled on the top of the gel. In lanes A and B, where triple primers were used for PCR, PCR products are labeled by the corresponding primer combinations that gave rise to the specific product. PCR product sizes are shown beside the primer combinations. All primer sequences are shown in Table 1. ST stands for 1 kb plus ladder (Invitrogen, Carlsbad, CA). DNA samples were run on a 1% agarose gel.

GTCTTTTTCACACGTAAAAAGCGGAGGAGTTTTGCAATTTT
GTTGGTTGTAACGATCCTCCGTTGATTTTGGCCTCTTTCTC
CATGGGCGGGCTGGGCGTATTTGAAGCGG**GTACCTACGC**
CCTGTCCCTGGGCTTAGGCAACCCGAGCTGTTACACAC
CTAGTCGCCTTCTCGCCCGGATTCATGAGGCCACCGCCGG
CCGAGCCGCTTGGCTAGATGCAGCCGTGGCGGCGGCGG
CGGAGTTGCCGGCACAGCTGCTACTGCCAGCGCTGTGG
GCAATTCACGACCGCACGCCTGGCGTTGCCGACGCCAGA
AGCCGGTGGGTGACGCCCGGAGCCACGGACGCAGCACA
GGCGGCTGCGAAGGCCAGGCGCAGGCTCAGGAGCGTG
TCATGGCGGAGACCGCGACACTCACAAACAGCAAAGCCATT
GGGCGTATCAGCAGTGGCGCCAGCCAAGGCCGCAGCAGC
ACTGGAGACGGTTGCGAGGCAGGCGGTGCACTTGACGGG
AGGGGGGCGGCTGCCCGGTGTGTTCTGTGGCGCACGGGCG
GGGAGGACGAGATCCTGCCGGTGCCTGCTCGCACCCGCA
TCGTGTCGCGGTGCGGGCTGCGGGCTTGACGTGGTGT
ACAAGGAGTGAGTGTGCTTTGTACACGGTGCGGTGCGGTG
CTGCTCCCTGCCGCCGCCACGCCAGCGCGCTCCTGTCCA
CTGCTCCACGGCCACCATGCATGCCGCCCGTGCCTGCCA
ACCCGGGACTTGACATCGCGCAATGACCCTACGGCTTCG
CCCATCAGCCGCTT

Figure 4. The APHVIII flanking genomic DNA sequence in 5A7. Primer 2R (Table 1), specific to the 3'UTR of the APHVIII gene was used for sequencing the 850 bp Thermal Asymmetric InterLaced 2 (TAIL2) PCR product. 3'UTR sequence of APHVIII is in bold black, extra nucleotide additions are in bold blue. The flanking *Chlamydomonas* UP6 genomic sequence is denoted in red. The APHVIII end of the plasmid has been inserted after the eighth nucleotide in the fourth exon of UP6 gene.

Taken together the data shows that at least a 35,715 bp genomic region has been deleted and or/displaced when the plasmid got inserted in the 5A7 genome. Except for the *CHL11* gene, the functions of the remaining eight genes (including UP6) are not known. We do not yet know the exact location of the pUC origin (pUC ori) end of the plasmid (Figure 1) in the 5A7 genome.

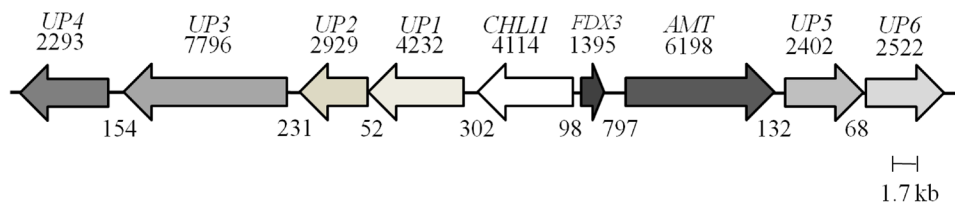


Figure 5. A schematic map of the UP6 locus on chromosome 6. The map shows a 35.7 kb genomic DNA region that harbors the UP6 and eight genes located upstream of it. Each arrow represents a gene. The name of the gene is given on top of the arrow. The black numbers on the top of arrows denote sizes of genes (bp) while black numbers below denote distances in between genes (bp).

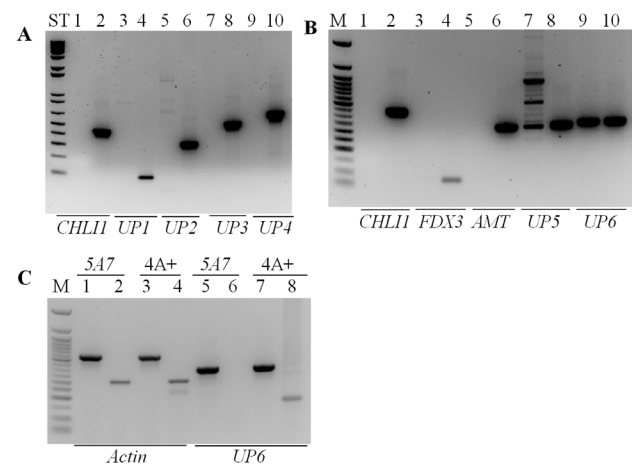


Figure 6. PCR analyses using primers specific to eight genes neighboring the CHL11 locus. (A) PCR using the genomic DNA of 5A7 and 4A+ with primers specific to CHL11 and four neighboring genes (UP1, UP2, UP3, UP4) downstream of the CHL11 gene. The sizes of the genomic DNA PCR products for CHL11, UP1, UP2, UP3 and UP4 are, 459, 100, 342, 550 and 672 (bp), respectively. Odd numbered lanes denote 5A7; even numbered lanes denote 4A+; ST denotes 1 kb plus DNA ladder. (B) PCR using the genomic DNA of 5A7 and 4A+ with primers specific to CHL11 and four neighboring genes (FDX3, AMT, UP5 and UP6) upstream of the CHL11 gene. The sizes of the genomic DNA PCR products for CHL11, FDX3, AMT, UP5 and UP6 are, 459, 90, 369, 379 and 369 (bp), respectively. Odd numbered lanes denote 5A7; even numbered lanes denote 4A+; M denotes 50 bp DNA ladder (NEB, Beverly, MA). (C) PCR and RT-PCR with UP6 gene specific primers using the 5A7 and 4A+ genomic DNA and cDNA. Actin was used as a control. Actin genomic and cDNA product sizes are 527 and 305 (bp), respectively. Odd numbered lanes denote 5A7; even numbered lanes denote 4A+; M denotes 50 bp DNA ladder. All DNA samples were run on a 1.8% agarose gel. Gene names are given at the bottom of the gel. Primer sequences are shown in Table 2 and Table 3.

Checking for the absence/presence of the CHL11 transcript and the CHL12 gene and transcript

As CHL1 plays a role in Chl biosynthesis, we checked for the presence/absence of the CHL11 and CHL12 in 5A7. RT-PCR results show that CHL11 transcript is absent and CHL12 transcript is present in 5A7 (Figure 7A, Table 4). Figure 7B shows the presence of the CHL12 gene in 5A7.

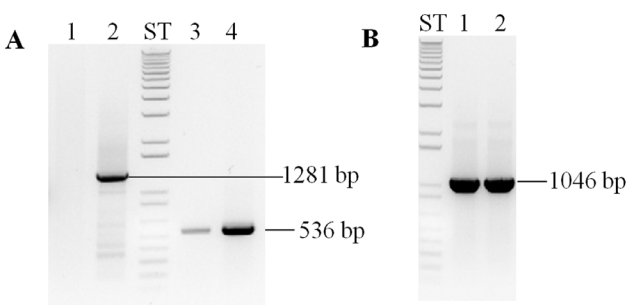


Figure 7. PCR analyses to check for the presence of the CHL11 and CHL12. (A) Semi-quantitative RT-PCR analyses of 5A7 and 4A+ using CHL11 and CHL12 primers. (B) PCR analyses using 5A7 and 4A+ genomic DNA with CHL12 gene specific primers. Odd numbered lanes denote 5A7; even numbered lanes denote 4A+. PCR product sizes (bp) are labeled. ST denotes 1 kb plus DNA ladder. All DNA samples were run on a 1.8% agarose gel. Gene names are given at the top of the gel. Primer sequences are shown in Table 4.

Complementation of 5A7

We will be referring to strain 5A7 as *chl1* from here onward. As our *chl1* lacks Chl and CHL11 is involved in Chl biosynthesis, we cloned the CHL11 cDNA in the pDBle vector to transform 5A7 (Figure 8, Table 4). CHL11 expression is driven by the constitutive *PsaD* promoter in the CHL11-pDBle construct (Figure 8). pDBle has two *Ble* genes that confer resistance to the antibiotic zeocin. Figure 9 shows growth phenotypes of two *chl1* complements (*chl1*-7 and *chl1*-8); 5A7 and 4A+. *chl1* complements are able to synthesize Chl, are not light sensitive and are capable of photosynthesis (Figure 9). As the *chl1* complements harbor the *Ble* gene (from the pDBle vector) and *APHVIII* gene (derived from the parental strain 5A7), they can grow both on zeocin and paromomycin media plates unlike *chl1* and 4A+ (Figure 9).

Chl analyses show that both *chl1* complements are about 33–46% Chl deficient. *chl1* complements have a similar Chl *alb* ratio as that of the wild type (Table 5, Data File below). Figure 10A and Figure 10B show a schematic figure of the native *Chlamydomonas* CHL11 gene and the trans CHL11 gene used for complementation, respectively. PCR analyses using the genomic DNA show that the *chl1* complements have the trans CHL11 gene (Figure 10C and 10D). In Figure 10D the genomic DNA PCR product sizes in the two complement lanes are smaller than that in the 4A+ lane as

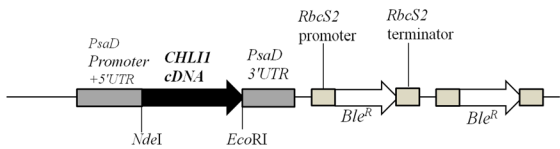


Figure 8. A schematic figure of the pDBle vector used for complementation of *chl1*. *NdeI/EcoRI* double digested *CHL11* cDNA (1260 bp) was cloned into the *NdeI/EcoRI* double digested pDBle plasmid. Primers used for amplification of *CHL11* cDNA are shown in Table 4. *CHL11* expression is driven by the constitutive *PsaD* promoter. *NdeI* and *EcoRI* restriction sites are labeled. pDBle contains two copies of *Ble^R* genes driven by the Rubisco (*RbcS2*) promoter. The size of the *CHL11*-pDBle construct is 7957 bp. Black arrow and white arrow denotes *CHL11* cDNA and *Ble^R* gene, respectively. Grey boxes denote UnTranslated regions (UTR).

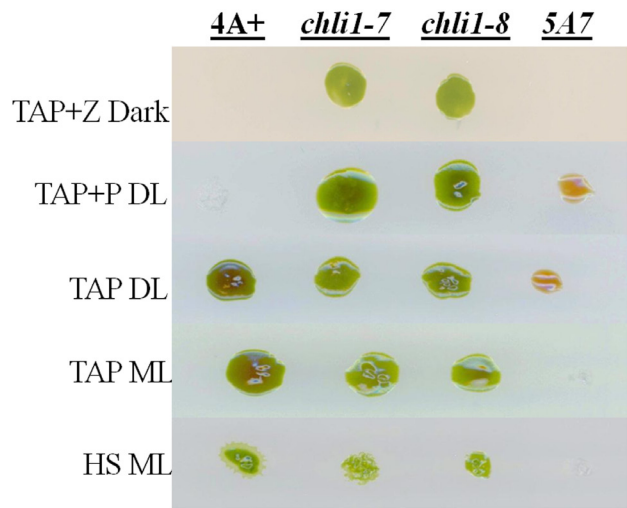


Figure 9. Growth phenotype analysis of *chl1* complements. *chl1-7* and *chl1-8* complements were grown with 5A7 and 4A+ under five growth conditions: TAP+Z (zeocin) in the dark, TAP in dim light (DL) (15 $\mu\text{mol photons m}^{-2}\text{s}^{-1}$), TAP+P (paromomycin) in DL, TAP in medium light ML (300 $\mu\text{mol photons m}^{-2}\text{s}^{-1}$) and HS in ML.

we have cloned the *CHL11* cDNA for complementation. The *Chlamydomonas* *CHL11* protein has about 71% sequence identity to the *Arabidopsis* *CHL11* protein. Figure 11A shows a stained protein gel. The two *chl1* complements and the 4A+ were loaded on an equal Chl basis in each lane in the protein gel (Figure 11A). As 5A7 lacks Chl, the maximum amount of protein (40 μg) that can be loaded in a mini protein gel, was used (Figure 11A). Light harvesting complex proteins (LHCs) can barely be detected in the *chl1* mutant (Figure 11A).

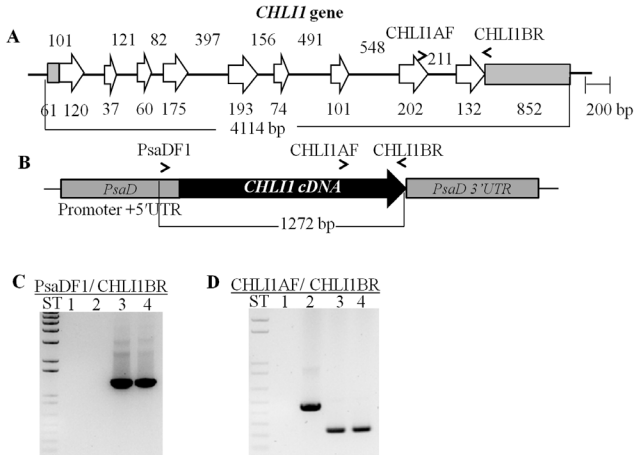


Figure 10. Molecular analysis of *chl1* complements. (A) A schematic of the native *CHL11* gene. The tan bars denote UnTranslated Regions (UTRs), the white arrows represent exons and the black lines denote introns. (B) A schematic of the *CHL11*-pDBle complementation vector containing the *CHL11* cDNA. *PsaD* promoter, 5'UTR, 3'UTR and *CHL11* specific primers are labeled. (C) Genomic DNA PCR using a *PsaD* 5'UTR specific primer and a *CHL11* specific primer. Product size: 1272 bp. Lane 1: 5A7; Lane 2: 4A+; Lane 3: *chl1-7*; Lane 4: *chl1-8*. ST represents 1 kb plus DNA ladder. (D) Genomic DNA PCR using *CHL11* specific primers. Genomic DNA product size: 459 bp; cDNA product size: 249 bp. Lanes 3 and 4 show smaller PCR products compared to that in lane 2 as cDNA was used for complementation. Lane 1: 5A7; Lane 2: 4A+; Lane 3: *chl1-7*; Lane 4: *chl1-8*. ST represents 1 kb plus DNA ladder. All primer sequences are shown in Table 4.

Spectrophotometric analyses of chlorophyll in 4A+, *chl1*, *chl1-7* and *chl1-8* strains of *Chlamydomonas reinhardtii*

1 Date File

<http://dx.doi.org/10.6084/m9.figshare.709569>

Western analyses of the two *chl1* complements with a *CHL11* antibody show that the *CHL11* protein is absent in the *chl1* mutant but present in the *chl1* complements (Figure 11B). Western analyses also show that the *Arabidopsis* *CHL11* antibody detects both the *CHL11* (40 kDa) and *CHL12* (42 kDa) protein in *Chlamydomonas* as the *Chlamydomonas* *CHL12* has about 62% sequence identity to the *Arabidopsis* *CHL11* (Figure 11B). In the wild type the *CHL12* protein amount is much lower than that of *CHL11*. As the *chl1* complements are Chl deficient compared to the wild type, the two complement lanes show higher amount of protein loadings (Figure 11A). Although more protein was loaded in the 5A7 lane in the protein gel

Table 5. Spectrophotometric analyses of chlorophyll in 4A+, *chl1*, *chl1-7* and *chl1-8* strains. Chlorophyll analyses were done on three biological replicates for each strain. Strains were grown mixotrophically in TAP under 15–20 $\mu\text{mol photons m}^{-2}\text{s}^{-1}$. Mean values are shown in the table. Statistical error (\pm SD) was $\leq 10\%$ of the values shown. ND: not detected.

Parameter	4A+	Strains <i>chl1</i>	<i>chl1-7</i>	<i>chl1-8</i>
Chl/cell (nmoles/cell)	3.6×10^{-6}	ND	2.0×10^{-6}	2.5×10^{-6}
Chl a/b ratio	2.8	–	2.7	2.8

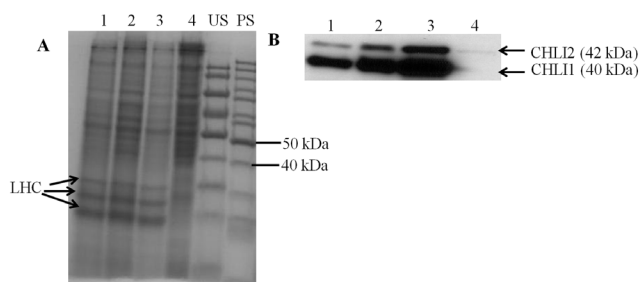


Figure 11. SDS-PAGE and Western analyses. (A) A stained protein gel. Lanes 1, 2, 3 and 4 represent *chli1-8*, *chli1-7*, 4A+ and 5A7, respectively. Light harvesting complex (LHC) protein bands are labeled. PS and US denote pre stained and unstained molecular weight protein ladders, respectively. Total cell extract of different strains were loaded on equal Chl basis (4 µg of Chl) in lanes 1, 2 and 3. In lane 4, 40 µg of protein (the maximum amount of protein that can be loaded on a mini protein gel) was loaded as 5A7 lacks Chl. **(B)** Western analyses using a CHLI1 antibody generated against the *Arabidopsis* CHLI1 protein. Lanes 1, 2, 3 and 4 represent *chli1-8*, *chli1-7*, 4A+ and 5A7, respectively. CHLI1 (40 kDa) and CHLI2 (42 kDa) proteins detected by the antibody are labeled.

compared to that in the 4A+ and the *chli1* complement lanes, the CHLI2 protein was barely detectable in 5A7 (Figure 11B).

Discussion

5A7 is the first *chli1* mutant to be identified in *C. reinhardtii* and in green algae. *CHLI1* deletion has affected Chl biosynthesis and photosynthetic growth in the *chli1* mutant (Figure 2). Over-accumulation of photo-excitabile PPIX leads to photo-oxidative damage to the cells in presence of light and oxygen⁴⁻⁶. The light sensitivity of the *chli1* is most probably due to an over-accumulation of PPIX which occurs due to the inactivity of MgChel enzyme which converts PPIX to MgPPIX. Future HPLC (High Performance Liquid Chromatography) analyses of steady state tetrapyrrole intermediates will confirm this hypothesis.

Based on the current molecular analyses, our *chli1* mutant has a deletion of at least nine genes (including the *CHLI1* gene). Currently we are investigating the exact insertion point of the pUC ori end of the plasmid in the *chli1* genome (Figure 1). This will provide us with a precise estimate of the number of gene deletions in *chli1*. Although complementation of *chli1* with the *CHLI1* gene restored Chl biosynthesis, tolerance to high light levels and photo-autotrophic growth, *chli1* complements are still Chl deficient to some extent (Table 5). This is probably due to a lower expression of the CHLI1 protein in these *chli1* complements (Figure 11). Semi-quantitative RT-PCR shows that the CHLI2 transcript level in *chli1* is much lower than that in the wild type strain (Figure 7). Western analyses show that the CHLI2 protein level is severely reduced in the *chli1* mutant (Figure 11). Real Time PCR analyses can be used to confirm whether the reduction in the CHLI2 protein level is due to a low abundance of the CHLI2 transcript. Additionally, the roles of any of the other missing eight genes in Chl biosynthesis cannot be ruled out as currently the functions of these genes are unknown.

In *Arabidopsis*, it has been shown that CHLI2 does play a limited role in Chl biosynthesis in the absence of CHLI1¹²⁻¹⁵. 5A7 possesses

an intact *CHLI2* gene but the *CHLI2* protein is barely detectable in the mutant. This raises two questions:

- 1) Is the low abundance of the CHLI2 protein a general effect or is it a specific effect of the *CHLI1* mutation?
- 2) Is the total absence of Chl in strain 5A7 due to the specific absence of CHLI1 or due to the absence of both CHLI1 and the near absence of CHLI2 protein?

The first question can be addressed by performing Western analyses of 5A7 with antibodies raised against any non-photosynthetic and/or photosynthetic protein. If the low abundance of the CHLI2 protein is due to a general effect of the mutation, there will be an overall reduction of different cellular proteins. The second question can be addressed by overexpressing CHLI2 in 5A7 to see if Chl biosynthesis can occur in the absence of CHLI1 or by silencing CHLI2 in the wild type strain using RNA interference or micro RNA based techniques.

Norflurazon (NF) causes photo-oxidative damage to the chloroplast by inhibiting carotenoid biosynthesis.^{24,27-31} In *Arabidopsis* MgPPIX is hypothesized to be a retrograde signal from the chloroplast to the nucleus on the basis of data obtained with mutants that are defective in the NF, induced down-regulation of the transcription of the light harvesting complex protein B(LHCB) expression [gun (genomes uncoupled) phenotype]^{27,28}. In *Arabidopsis*, there are controversies regarding whether *chli1* mutants are *gun* mutants^{12,29-31}. Our *chli1* lacks detectable LHC proteins on the stained gel (Figure 11A). LHC transcript and protein analyses in NF treated and untreated cells and HPLC based analyses of steady state tetrapyrroles in *chli1* will help to confirm if it is a “gun” mutant. In summary, in the future our *chli1* mutant can be used to clarify the functional role of CHLI1 and CHLI2 in Chl biosynthesis as well as their roles in retrograde signaling in *C. reinhardtii*.

Author contributions

MM and PG conceived the study, designed the experiments and took the lead role in preparing the manuscript. DW generated the mutant 5A7 and isolated genomic DNA from the strains. PG did the PCR analyses, isolated genomic DNA, performed growth and Chl analyses of different strains, prepared cDNA, cloned the *CHLI1* gene and complemented the mutant 5A7. JS maintained all the strains and was involved in the mutagenesis experiment. MM, PG, CL, KS, JM, KL, TH and AC maintained cultures, performed the TAIL-PCR analyses, extracted TAIL-PCR product from agarose gels, prepared DNA samples for sequencing and analyzed the DNA sequencing data. MM performed the protein and Western analyses. All authors were involved in the revision of the manuscript draft and have agreed to the final content.

Competing interests

No competing interests were disclosed.

Grant information

This project was supported by several grants awarded to Dr. Mautusi Mitra. These are: the start-up grant of the University of West Georgia (UWG), the Faculty Research Grant by the UWG College of Science and Mathematics, the Internal Development

Grant by the UWG office of Research and Sponsored Project, the Research Incentive grant by the UWG College of Science and Mathematics, the UWG Student Research Assistance Program (SRAP) grant and the UWise-BOR-STEM II grant from UWG.

The funders had no role in study design, data collection and analysis, decision to publish, or preparation of the manuscript.

Acknowledgements

We would like to thank Dr. Krishna K. Niyogi (UC, Berkeley) for providing the 4A+ strain and the pBC1 plasmid that were

used for mutagenesis, Dr. Saul Purton (University College London, UK) for providing the complementation vector pDBle and Dr. Robert Larkin (Michigan State University) for giving us the *Arabidopsis* CHLI antibodies. We are grateful to Dr. Bernhard Grimm and Dr. Pawel Brzezowski (Humboldt University, Berlin, Germany) for providing us the *FDX3*, *UP1*, *UP2*, and *AMT* gene specific primers for PCR analyses. We would also like to thank Dr. Leos Kral (University of West Georgia) for allowing us to use his nano spectrophotometer and Dr. Anastasios Melis (UC, Berkeley) for allowing us to perform the protein and Western analyses at his laboratory.

References

- Merchant SS, Prochnik SE, Vallon O, *et al.*: **The Chlamydomonas genome reveals the evolution of key animal and plant functions.** *Science*. 2007; **318**(5848): 245–250.
[PubMed Abstract](#) | [Publisher Full Text](#) | [Free Full Text](#)
- Dent RM, Haglund CM, Chin BL, *et al.*: **Functional genomics of eukaryotic photosynthesis using insertional mutagenesis of *Chlamydomonas reinhardtii*.** *Plant Physiol*. 2005; **137**(2): 545–556.
[PubMed Abstract](#) | [Publisher Full Text](#) | [Free Full Text](#)
- Gutman BL, Niyogi KK: ***Chlamydomonas* and *Arabidopsis*. A dynamic duo.** *Plant Physiol*. 2004; **135**(2): 607–610.
[PubMed Abstract](#) | [Publisher Full Text](#) | [Free Full Text](#)
- Beale SI: **Chloroplast Signaling: Retrograde Regulation Revelations.** *Curr Biol*. 2011; **21**(10): R391–R393.
[PubMed Abstract](#) | [Publisher Full Text](#)
- Moulin M, Smith AG: **Regulation of tetrapyrrole biosynthesis in higher plants.** *Biochem Soc Trans*. 2005; **33**(Pt 4): 737–742.
[PubMed Abstract](#) | [Publisher Full Text](#)
- Tanaka R, Tanaka A: **Tetrapyrrole biosynthesis in higher plants.** *Annu Rev Plant Biol*. 2007; **58**: 321–346.
[PubMed Abstract](#) | [Publisher Full Text](#)
- Walker CJ, Willows RD: **Mechanism and regulation of Mg-chelatase.** *Biochem J*. 1997; **327**(Pt 2): 321–333.
[PubMed Abstract](#) | [Free Full Text](#)
- Walker CJ, Weinstein JD: **The Magnesium-Insertion Step Of Chlorophyll Biosynthesis Is A two-Stage Reaction.** *Biochem J*. 1994; **299**(Pt 1): 277–284.
[PubMed Abstract](#) | [Free Full Text](#)
- Masuda T: **Recent overview of the Mg branch of the tetrapyrrole biosynthesis leading to chlorophylls.** *Photosynth Res*. 2008; **96**(2): 121–143.
[PubMed Abstract](#) | [Publisher Full Text](#)
- Apchelimon AA, Soldatova OP, Ezhova TA, *et al.*: **The analysis of the *Chl 1* and *Chl 2* genes using acifluorfen-resistant mutant of *Arabidopsis thaliana*.** *Planta*. 2007; **225**(4): 935–943.
[PubMed Abstract](#) | [Publisher Full Text](#)
- Ikegami A, Yoshimura N, Motohashi K, *et al.*: **The CHLI1 subunit of *Arabidopsis thaliana* magnesium chelatase is a target protein of the chloroplast thioredoxin.** *J Biol Chem*. 2007; **282**(27): 19282–19291.
[PubMed Abstract](#) | [Publisher Full Text](#)
- Huang YS, Li HM: ***Arabidopsis CHLI2* Can Substitute for *CHLI1*.** *Plant Physiol*. 2009; **150**(2): 636–645.
[PubMed Abstract](#) | [Publisher Full Text](#) | [Free Full Text](#)
- Kobayashi K, Mochizuki N, Yoshimura N, *et al.*: **Functional analysis of *Arabidopsis thaliana* isoforms of the Mg-chelatase CHLI subunit.** *Photochem Photobiol Sci*. 2008; **7**(10): 1188–1195.
[PubMed Abstract](#) | [Publisher Full Text](#)
- Koncz C, Mayerhofer R, Koncz-Kalman Z, *et al.*: **Isolation of a gene encoding a novel chloroplast protein by T-DNA tagging in *Arabidopsis thaliana*.** *EMBO J*. 1990; **9**(5): 1337–1346.
[PubMed Abstract](#) | [Free Full Text](#)
- Rissler HM, Collakova E, DellaPenna D, *et al.*: **Chlorophyll biosynthesis. Expression of a second *Chl I* gene of magnesium chelatase in *Arabidopsis* supports only limited chlorophyll synthesis.** *Plant Physiol*. 2002; **128**(2): 770–779.
[PubMed Abstract](#) | [Publisher Full Text](#) | [Free Full Text](#)
- Soldatova O, Apchelimon A, Radukina N, *et al.*: **An *Arabidopsis* mutant that is resistant to the protoporphyrinogen oxidase inhibitor acifluorfen shows regulatory changes in tetrapyrrole biosynthesis.** *Mol Genet Genomics*. 2005; **273**(4): 311–318.
[PubMed Abstract](#) | [Publisher Full Text](#)
- Gorman DS, Levine RP: **Cytochrome f and plastocyanin: their sequence in the photosynthetic electron transport chain of *Chlamydomonas reinhardtii*.** *Proc Natl Acad Sci U S A*. 1965; **54**(6): 1665–1669.
[PubMed Abstract](#) | [Publisher Full Text](#) | [Free Full Text](#)
- Sueoka N: **Mitotic Replication of Deoxyribonucleic Acid in *Chlamydomonas reinhardtii*.** *Proc Natl Acad Sci U S A*. 1960; **46**(1): 83–91.
[PubMed Abstract](#) | [Publisher Full Text](#) | [Free Full Text](#)
- Davies JP, Weeks DP, Grossman AR: **Expression of the arylsulfatase gene from the beta 2-tubulin promoter in *Chlamydomonas reinhardtii*.** *Nucleic Acids Res*. 1992; **20**(12): 2959–2965.
[PubMed Abstract](#) | [Publisher Full Text](#) | [Free Full Text](#)
- Kindle KL, Schnell RA, Fernández E, *et al.*: **Stable nuclear transformation of *Chlamydomonas* using the *Chlamydomonas* gene for nitrate reductase.** *J Cell Biol*. 1989; **109**(6 Pt 1): 2589–2601.
[PubMed Abstract](#) | [Publisher Full Text](#) | [Free Full Text](#)
- Lowry OH, Rosebrough NJ, Farr AL, *et al.*: **Protein measurement with the Folin phenol reagent.** *J Biol Chem*. 1951; **193**(1): 265–275.
[PubMed Abstract](#)
- Smith BM, Morrissey PJ, Guenther JE, *et al.*: **Response of the Photosynthetic Apparatus in *Dunaliella salina* (Green Algae) to Irradiance Stress.** *Plant Physiol*. 1990; **93**(4): 1433–1440.
[PubMed Abstract](#) | [Publisher Full Text](#) | [Free Full Text](#)
- Laemmli UK: **Cleavage of structural proteins during the assembly of the head of bacteriophage T4.** *Nature*. 1970; **227**(5259): 680–685.
[PubMed Abstract](#) | [Publisher Full Text](#)
- Adhikari ND, Orler R, Chory J, *et al.*: **Porphyrins promote the association of GENOMES UNCOUPLED 4 and a Mg-chelatase subunit with chloroplast membranes.** *J Biol Chem*. 2009; **284**(37): 24783–24796.
[PubMed Abstract](#) | [Publisher Full Text](#) | [Free Full Text](#)
- Arnon DI: **Copper Enzymes in Isolated Chloroplasts. Polyphenoloxidase in *Beta vulgaris*.** *Plant Physiol*. 1949; **24**(1): 1–15.
[PubMed Abstract](#) | [Publisher Full Text](#) | [Free Full Text](#)
- Melis A, Spangfort M, Andersson B: **Light-Absorption And Electron-Transport Balance Between Photosystem II And Photosystem I In Spinach Chloroplasts.** *Photochem Photobiol*. 1987; **45**(1): 129–136.
[Publisher Full Text](#)
- Nott A, Jung HS, Koussevitzky S, *et al.*: **Plastid-to-nucleus retrograde signaling.** *Annu Rev Plant Biol*. 2006; **57**: 739–759.
[PubMed Abstract](#) | [Publisher Full Text](#)
- Susek RE, Ausubel FM, Chory J: **Signal transduction mutants of *Arabidopsis* uncouple nuclear CAB and RBCS gene expression from chloroplast development.** *Cell*. 1993; **74**(5): 787–799.
[PubMed Abstract](#) | [Publisher Full Text](#)
- Gadjieva R, Axelsson E, Olsson U, *et al.*: **Analysis of *gun* phenotype in barley magnesium chelatase and Mg-protoporphyrin IX monomethyl ester cyclase mutants.** *Plant Physiol Biochem*. 2005; **43**(10–11): 901–908.
[PubMed Abstract](#) | [Publisher Full Text](#)
- Mochizuki N, Brusslan JA, Larkin R, *et al.*: ***Arabidopsis* genomes uncoupled 5 (*GUN5*) mutant reveals the involvement of Mg-chelatase H subunit in plastid-to-nucleus signal transduction.** *Proc Natl Acad Sci U S A*. 2001; **98**(4): 2053–2058.
[PubMed Abstract](#) | [Publisher Full Text](#) | [Free Full Text](#)
- Strand Å, Asami T, Alonso J, *et al.*: **Chloroplast to nucleus communication triggered by accumulation of Mg-protoporphyrin IX.** *Nature*. 2003; **421**(6918): 79–83.
[PubMed Abstract](#) | [Publisher Full Text](#)

Open Peer Review

Current Peer Review Status:   

Version 1

Reviewer Report 26 June 2013

<https://doi.org/10.5256/f1000research.1581.r1027>

© 2013 Ynalvez R. This is an open access peer review report distributed under the terms of the [Creative Commons Attribution License](#), which permits unrestricted use, distribution, and reproduction in any medium, provided the original work is properly cited.



Ruby A. Ynalvez 

Department of Biology and Chemistry, Texas A&M International University, Laredo, TX, USA

The title is appropriate for the content of the article. In addition, the abstract represents a suitable summary of this interesting work. The authors were able to successfully isolate a novel *Chlamydomonas reinhardtii* mutant defective in chlorophyll biosynthesis. Using molecular biology techniques they have provided sufficient evidence that the novel mutant is missing a CHLI1 gene and having an intact CHLI2 gene. Their results also provided evidence that CHLI1 in *C. reinhardtii* is important in chlorophyll biosynthesis and that the presence of its homolog CHLI2 is not sufficient to make up for the function of CHLI1 in chlorophyll biosynthesis. The growth phenotype analysis of the rescued transformants has shown clearly the role of CHLI1 in chlorophyll biosynthesis. It would be interesting to know what percentage of rescued transformants was in their complementation analysis. Overall this is an interesting article. More importantly, this work reports the first *chli1* mutant to be identified in *C. reinhardtii*, as well as in green algae. The *chli1* mutant will open up new avenues to further explore the functional roles of CHLI1 and CHLI2 in chlorophyll biosynthesis in particular in *C. reinhardtii*.

Suggested revisions:

On page 6, sentence 2 "5A7 lacks detectable chlorophyll, appears yellowish-brown in color and grows only under heterotrophic conditions in the dark or in the dim light in the presence of acetate in the growth media (Figure 1)." *Figure 1 should be Figure 2. On page 6, sentence 3 "It is incapable of photosynthesis and is sensitive to light intensities higher than 20 $\mu\text{mol photons m}^{-2}\text{s}^{-1}$ (Figure 2)," ---*can be more clearly referred to as Figure 2A instead of Figure 2 only. On page 8, Figures 5A, 5B and 5C mentioned in text actually refers to Figures 6A, 6B and 6C.

Competing Interests: No competing interests were disclosed.

I confirm that I have read this submission and believe that I have an appropriate level of expertise to confirm that it is of an acceptable scientific standard.

Reviewer Report 24 June 2013

<https://doi.org/10.5256/f1000research.1581.r1023>

© 2013 Masuda T. This is an open access peer review report distributed under the terms of the [Creative Commons Attribution License](#), which permits unrestricted use, distribution, and reproduction in any medium, provided the original work is properly cited.



Tatsuru Masuda

Environmental Sciences, University of Tokyo, Tokyo, Japan

In this paper, the authors have successfully identified a *Chlamydomonas* mutant deficient in chlorophyll biosynthesis using insertional mutagenesis. Through molecular genetic analyses, the authors demonstrated that the deficiency of the *CHL1* gene, which encodes a subunit of Mg-chelatase, caused the chlorophyll-deficient phenotype. Although *Chlamydomonas* has another homologous *CHL2* gene, this mutant failed to accumulate chlorophylls, suggesting the limited function of *CHL2* on chlorophyll biosynthesis. To clarify whether the reduced expression of *CHL2* caused chlorophyll deficiency, overexpression of *CHL2* in the mutant should give further insights into the functionality of *CHL2*. In addition, it is desirable to determine the levels of chlorophyll intermediates that are correlated to the photosensitivity of the mutant.

Suggested revisions:

Considering the distinct regulation of chlorophyll biosynthesis and nuclear gene expression between *Chlamydomonas* and *Arabidopsis*, I am not sure whether this mutant is useful for analysis of the retrograde signaling. Actually, a number of previous papers suggested distinct roles of tetrapyrroles on nuclear gene expression in *Chlamydomonas* (Kropat *et al.* 1997, Kropat *et al.* 2000, Chekounova *et al.* 2001 and Vos *et al.* 2011). In this sense, the last paragraph of the Discussion section should be largely revised including already known mechanisms in *Chlamydomonas* cells and not be so focused on *Arabidopsis*.

Competing Interests: No competing interests were disclosed.

I confirm that I have read this submission and believe that I have an appropriate level of expertise to confirm that it is of an acceptable scientific standard.

Reviewer Report 20 June 2013

<https://doi.org/10.5256/f1000research.1581.r1014>

© 2013 Oppenheimer D. This is an open access peer review report distributed under the terms of the [Creative Commons Attribution License](#), which permits unrestricted use, distribution, and reproduction in any medium, provided the original work is properly cited.



David Oppenheimer

Department of Botany, University of Florida, Gainesville, FL, USA

In this paper, the authors describe the isolation and characterization of a mutant of *Chlamydomonas reinhardtii* deficient in chlorophyll biosynthesis.

The authors screened a population of *Chlamydomonas* that was transformed with an insertional mutagenesis vector. They found a chlorophyll deficient mutant that only grew under heterotrophic conditions. The authors provided convincing evidence that this mutant lacked the *CHLI1* gene as well as several flanking genes. The *CHLI1* gene encodes a subunit of the enzyme responsible for inserting Mg^{2+} into protoporphyrin IX. Interestingly, the *chli1* mutant also showed decreased expression of a homolog of *CHLI1* and *CHLI2*. The authors also rescued the *chli1* mutant phenotype using a wildtype *CHLI1* cDNA transgene.

This work is important because it is the first report of a *chli1* mutant from a green alga. This mutant provides a starting point for additional genetic and biochemical analyses of chlorophyll biosynthesis in *Chlamydomonas*.

Suggested revisions:

The authors should change their mutant name to *chli1-1*, since it is the first mutant allele isolated. This sets a precedent for naming new alleles as they are discovered.

Instead of calling the rescued transformants that contain the wildtype *CHLI1* cDNA "complements", the authors should consider calling them "rescued transformants". Some geneticists adhere to a more strict use of the term "complementation" and its derivatives where complementation is done by crossing two mutants, and not by genetic transformation of a mutant using a wildtype gene.

Competing Interests: No competing interests were disclosed.

I confirm that I have read this submission and believe that I have an appropriate level of expertise to confirm that it is of an acceptable scientific standard.

The benefits of publishing with F1000Research:

- Your article is published within days, with no editorial bias
- You can publish traditional articles, null/negative results, case reports, data notes and more
- The peer review process is transparent and collaborative
- Your article is indexed in PubMed after passing peer review
- Dedicated customer support at every stage

For pre-submission enquiries, contact research@f1000.com

F1000Research