



RESEARCH ARTICLE

REVISED Areca nut extract demonstrated apoptosis-inducing mechanism by increased caspase-3 activities on oral squamous cell carcinoma [version 5; peer review: 2 approved]

Liza Meutia Sari ¹, Gus Permana Subita², Elza Ibrahim Auerkari ³

¹Oral Medicine Department, Faculty of Dentistry, University of Syiah Kuala, Banda Aceh, 23111, Indonesia

²Oral Medicine Department, Faculty of Dentistry, University of Indonesia, Jakarta, 10430, Indonesia

³Oral Biology Department, Faculty of Dentistry, University of Indonesia, Jakarta, 10430, Indonesia

v5 First published: 11 Jun 2018, 7:723
<https://doi.org/10.12688/f1000research.14856.1>
 Second version: 26 Oct 2018, 7:723
<https://doi.org/10.12688/f1000research.14856.2>
 Third version: 07 Dec 2018, 7:723
<https://doi.org/10.12688/f1000research.14856.3>
 Fourth version: 12 Feb 2019, 7:723
<https://doi.org/10.12688/f1000research.14856.4>
 Latest published: 01 Jul 2019, 7:723
<https://doi.org/10.12688/f1000research.14856.5>

Abstract

Background: Oral squamous cell carcinoma is a neoplasm of keratinocyte cells of oral mucosa epithelium that can potentially spread through lymphatic tissue or blood vessel. Although areca nut is one of the plants with a risk of inducing that cancer, areca nut is believed to have high antioxidant properties. Due to the current interest in the apoptosis effects from areca nut for oral cancer treatment, we investigated its ability to induce apoptosis and caspase-3 activity in oral cancer cell lines: HSC-2 and HSC-3.

Methods: We examined the effect of areca nut on apoptosis and caspase-3 activity in HSC-2 and HSC-3 cells. Flow cytometry was conducted for the quantification of the cells that were apoptotic and expressing the caspase-3 enzyme for 24 and 48 hours.

Results: Areca nut induced a significant increase ($p < 0.01$) in late apoptosis of HSC-2 cells and mostly occurred over 48 hours. The study also found that in HSC-3, there were significant increases ($p < 0.01$) the percentage of cells in early apoptosis after 24 hours and late apoptosis at 48 hours. Caspase-3 activity increased after 24 and 48 hours of areca nut exposure in both cells.

Conclusions: The study showed that areca nut could be considered as a potential anticancer agent through its capability in inducing a caspase-dependent apoptosis.

Keywords

Areca nut, oral cancer, apoptosis, caspase-3


Open Peer Review

Reviewer Status

Invited Reviewers	
1	2
version 5	
(revision) 01 Jul 2019	 report
version 4	
(revision) 12 Feb 2019	 report
version 3	
(revision) 07 Dec 2018	 report
version 2	
(revision) 26 Oct 2018	 report
version 1	
11 Jun 2018	 report

1. Irna Sufiawati , Padjadjaran University, Bandung, Indonesia
 Solachuddin Jauhari Arief Ichwan,
 International Islamic University Malaysia,
 Selangor, Malaysia

Diah Savitri Ernawati, Airlangga University,
East Java, Indonesia

2. **Masa-Aki Ikeda** , Tokyo Medical and
Dental University, Tokyo, Japan

Any reports and responses or comments on the
article can be found at the end of the article.

Corresponding authors: Liza Meutia Sari (lizameutiasari@gmail.com), Elza Ibrahim Auerkari (eauekari@yahoo.com)

Author roles: **Sari LM:** Conceptualization, Funding Acquisition, Investigation, Methodology, Writing – Original Draft Preparation, Writing – Review & Editing; **Subita GP:** Methodology, Supervision; **Auerkari EI:** Conceptualization, Methodology, Supervision

Competing interests: No competing interests were disclosed.

Grant information: The author(s) declared that no grants were involved in supporting this work.

Copyright: © 2019 Sari LM *et al.* This is an open access article distributed under the terms of the [Creative Commons Attribution License](#), which permits unrestricted use, distribution, and reproduction in any medium, provided the original work is properly cited. Data associated with the article are available under the terms of the [Creative Commons Zero "No rights reserved" data waiver](#) (CC0 1.0 Public domain dedication).

How to cite this article: Sari LM, Subita GP and Auerkari EI. **Areca nut extract demonstrated apoptosis-inducing mechanism by increased caspase-3 activities on oral squamous cell carcinoma [version 5; peer review: 2 approved]** F1000Research 2019, 7:723 <https://doi.org/10.12688/f1000research.14856.5>

First published: 11 Jun 2018, 7:723 <https://doi.org/10.12688/f1000research.14856.1>

REVISED Amendments from Version 4

There are a few mistakes in interpreting graphs, so we've made major revisions in results.

We have also corrected the content of the discussion as the reviewer instructed.

There are a few new references in the new version.

See referee reports

Abbreviations

DNA, Deoxyribose Nucleic Acid; AIF, Apoptotic Inducing factor; AP-1, Activator Protein-1; Bcl-2, B-cell lymphoma-2; COX-2, Cyclooxygenase-2; DISC, Death Inducing Signal Complex; EGF, Epidermal Growth Factor; FDA, Food and Drug Administration; FITC, Fluorescein Isothiocyanate; IC50, Inhibition Concentration 50; IGF-1, Insulin Growth Factor-1; MAPKs, Mitogen-Activated Protein Kinases; PI, Propidium Iodide; PS, Phosphatidylserine; WHO, World Health Organization.

Background

Cancer originates from a multistep process which is modulated by environmental and genetic factors¹. Cancer cells undergo pathologic proliferation and no longer respond to expression signals from tumor suppressor genes, causing disruption of cell cycle phases which acts to repair DNA and eventually become antiapoptotic cells^{1,2}. Cell cycle inhibition and apoptosis induction are two strategies in treating cancer which is considered forms of targeted therapy³. Cancer cells lose the ability to control these two mechanisms⁴. The ability of an anti-neoplastic drug is to induce cell cycle inhibition and apoptosis highly influences its potency as a cytotoxic agent. An effective chemopreventive agent should preferably interfere early in the process of carcinogenesis to eliminate premalignant cells before they acquire malignant character⁵. Apoptosis is the process of programmed cell death and is dependent on cysteine protease enzymes called caspases⁶. There are two pathways involved in the initiation of apoptosis, the intrinsic and extrinsic pathway⁷. These two pathways ultimately lead to the activation of executioner caspases, caspases 3, 6, and 7⁷. Expression of caspase-3 is significantly lower in tumor tissue compared with normal tissue and tissue surrounding the tumor⁸. The caspase-3 is a key effector caspase in the apoptotic program of cell suicide. The lack of caspase-3 expression may lead survival of cancer cell so that it will increase the severity of cancer.

Natural compounds are important in the treatment of life-threatening conditions. In many surveys, herbal medicines are amongst the most commonly used group of treatment. Herbal remedies are believed by the general public to be safe, cause fewer side effects and less likely to cause dependency. According to WHO, poverty and poor access to treatment cause approximately 65%–80% of world population living in developing countries to still depend on natural ingredients of plants for medicine as they are much more affordable⁹.

Development of herbal drugs internationally has increased rapidly, with China, Europe, and the United States as the largest

suppliers. The percentage of herbal drug users has reached 90% in Ethiopia, 70% in India and Chile, and 40% in China and Colombia¹⁰. One study found that four in ten adults in the United States currently uses traditional alternative treatment¹¹. Of the drugs approved by the US FDA since 1984–1994, 60% are isolated from plants¹². Of the 121 types of drugs prescribed for cancer treatment, 90 are derived from medicinal plants¹⁰.

One study reports that of the 65 new drugs listed for cancer treatment since 1981–2002, 48 originated from natural products derived from plants¹³. Research and development of herbal medicines are needed to produce drugs which can be approved by formal health care agencies, especially in terms of their quality, safety, and efficacy¹⁴.

One of the plants with potential to be developed as a herbal medicine is the *pinang* plant (*Areca catechu* Linn; *areca*, *Palmaceae*). Indians and Malaysians chew this seed to refresh breath, smooth digestion, increase libido, treat helminth infections, and maintain stamina¹⁵. Areca nut is believed to be able to induce euphoria, a tranquilized condition, with warm and comforting effects. The activities of areca nut effects include antioxidant and antihelmintic^{16–24}, antidiabetic²⁵, antidepressant²⁰, antifungal²⁴, antibacterial²⁶, antimicrobial²⁷, antimalarial²⁸, anti-inflammatory²², insecticide, psychoactive, hepatoprotective²⁹, and larvicidal³⁰, antiaging and cosmetic³¹, hypolipidaemic³² and hypoglycemic³³. Other studies, however, have identified negative effect from excessive areca nut consumption specifically carcinogenic properties which can induce oral squamous cell carcinoma (OSCC)³⁴. Areca nut is traditionally masticated either alone or along with a large variety of ingredients, such as betel leaf (family Piperaceae), Uncaria gambir, and slaked lime for traditional ceremonial cultural purposes in Indonesia. Previous study showed that the antioxidant activity of areca nut extract has the potential to prevent oxidative damage in normal cells¹⁶. However, there are no current reports on the apoptotic mechanism of the areca nut extract on oral squamous carcinoma cell lines.

Hence in this study, the ability of areca nut to induce apoptosis and caspase-3 activity was evaluated and compared between two different time periods (24 and 48 hours) and two types of OSCC cell lines, human squamous carcinoma HSC-2 and HSC-3.

Methods

Sample preparation

The study materials were obtained from areca nuts of *pinang* plant from Aceh Besar, Indonesia, which was determined and documented by the Botanical Division of Biological Research Center LIPI Cibinong, complete with its roots, stems, leaves, flowers, and seeds in 2017.

Extraction

The sample used was two kilograms of areca nut (gross weight). Areca nut was collected and cleansed from dirt (wet sortation), then washed with running water until clean and drained. Those seeds were dried in open air and covered from direct sunlight then continued with drying using an oven at 50°C. Dried *simplicia* (unprocessed natural ingredient) was

crushed using a blender producing a powdered *simplicia* and sifted with 20 mesh sieves. The powder was macerated with 96% ethanol solvent. Around 500 grams powdered *simplicia* was put into a container, then 1 L of 96% ethanol was added, closed, and left for three days covered from sunlight, while repeatedly stirred. After three days the extract was strained, and the remaining extract then was dried. The dried extract was added to 500 mL of 96% ethanol and stirred, after acquiring all extract. The container was closed, left in a cool place and covered from sunlight for two days. The sediment was separated and liquid extract was obtained. Then the extract was evaporated using rotary evaporator at 30–40°C then concentrated again using water bath so a dense extract of areca nut would be obtained. The extract was stored in -20°C until further use. To prepare two different concentrations (IC₅₀ areca nut extract on HSC-2 and HSC-3 cells were 629.50 µg/mL and 164.06 µg/mL respectively), 10 mg of the powder was first dissolved in 150 µl of DMSO (276855, Sigma-Aldrich) and diluted with complete culture medium to reach the desired dilution.

Cell culture

The HSC-2 and HSC-3 cell lines were cultured in complete Dulbecco's modified Eagle's medium (D6429, Sigma-Aldrich) containing 10% FBS, nonessential amino acids, pyruvate, glutamine, and vitamins at 37°C with 5% CO₂/95% air in a humidified CO₂ incubator. All media were also supplemented with 100 units/mL of penicillin and 100 mg/mL of streptomycin (15070063, Thermo Fisher Scientific). The above-mentioned cell lines were procured more than 6 months ago and have not been tested recently for authentication in our laboratory. The HSC-3 and HSC-2 cell lines used in this study were provided by the Oral Biological Laboratory, Faculty of Dentistry of the University of Indonesia. The HSC-2 and HSC-3 cell lines used in this study were given by the Section of Molecular Embryology, Graduate School of Medical and Dental Sciences, Tokyo Medical and Dental University. The HSC-3 cell line was derived from an oral squamous cell carcinoma of the tongue with a *p53* gene mutation, namely a 4bp insertion or change in the amino acid in the form of TAAG insertion in codon 305–306, exon 8 (JCRB0623)³⁵. The HSC-2 cell line was derived from an oral squamous cell carcinoma of the mouth with the *p53* splice intron 6 mutation (JCRB0622)^{35–37}. Cell lines, placed in cryophilic liquid N₂, were then moved into a 15 mL tube, then PBS (10010031, ThermoFisher Scientific) was added up to 10 mL. The thawing process started with centrifuging by using Laboratory benchtop centrifuge Liston C 2201 for 10 min at 300 × g at room temperature, the supernatant was disposed, the cell concentrate at the base of the tube (pellet) was added to 2–3 mL complete DMEM medium, and then it was pipetted to culture a plate containing 7–10 mL DMEM medium and was spread evenly. It was incubated at 37°C with a 5% CO₂/95% air in a humidified CO₂ incubator. Media was changed by removing old medium from the culture plate by pipetting, rinsing with PBS two to three times, pouring new complete DMEM medium (around 7 – 10 mL) and then placing back into the incubator. If the cells achieved 80% confluence, then the confluence was ready to be harvested. The medium was disposed and rinsed with PBS Ca²⁺ and Mg²⁺ two to three times with the volume of 2 mL, then 1 mL Trypsin EDTA (59418C,

Sigma-Aldrich) was added, then it was incubated for five to ten minutes. After the addition of complete DMEM (2 – 3 mL) and transferred into a 15 mL tube by pipetting, and centrifuging at 500 rpm for 10 minutes, the supernatant was discarded. The pellet was homogenized by pipetting, and the resuspended cells with the culture medium were ready to be used for experiment and cell counting with a hemocytometer. We had performed the cell viability assay previously to evaluate the percentage cytotoxicity and IC₅₀ of areca nut extract after treating the HSC-2 cells for 72 hours is 629.50 µg/mL while in HSC-3 cells is 164.06 µg/mL³⁸. The protocol was approved by the Ethics Committee of the Faculty of Medicine, University of Indonesia no. 501/H2.F1/Etik/2014 in compliance with the International biosafety guidelines (WHO laboratory biosafety manual, 2004).

Treatment with areca nut extract

The HSC-2 and HSC-3 cells were plated at 1 × 10⁵ cells/well in 60 mm dishes with DMEM. Areca nut extract (629.50 µg/mL) was added for HSC-2 cells and 164.06 µg/mL for HSC-3 cells. For combination experiments, areca nut extracts were added at the same time and both were incubated for 24 and 48 h, before the preparation of cell extract or quantification of apoptosis and caspase-3 activity (see below).

Analysis of apoptosis activity

A flow cytometry was used to analyze tubes containing cells with and without extract material after 24 and 48 hours exposures. Cultures of HSC-2 and HSC-3 cells with 1 × 10⁵ cells/mL concentration were centrifuged for five minutes with 500 rpm speed, washed with 1 mL cold PBS (10010031, ThermoFisher Scientific), and re-centrifuged for five minutes and vortexed. One hundred µl test solution containing 1 × 10⁵ cells in each tube is resuspended with binding buffer. 5 µL FITC Annexin V (556547, BD Pharmingen™) and 5 µL PI (556547, BD Pharmingen™) stains were added to these cells and incubated for 15 minutes in a dark place, analyzed by flow cytometry (BD FACS Calibur Flow cytometry System type E 34297502328, San Jose, California, USA) and by manual gating using CellQuest software (Becton Dickinson, NJ). Gating was performed on blinded samples

Analysis of caspase-3 activity

Cells were collected with and without areca nut extract for 24 and 48 hours, respectively. Prepared HSC-2 and HSC-3 cells (1 × 10⁵ cells/mL, 5 mL) were washed with cold PBS and resuspended with 400 µL BD Cytotfix/Cytoperm™ Solution (51-6896KC, BD Pharmingen™). The procedure was begun by determining the amount of BD Perm/Wash™ buffer (51-6897KC, BD Pharmingen™) and 20 µL Rabbit anti-active caspase-3 polyclonal antibody (351-68655X, BD Pharmingen™) required so that each test was consist of 100 µL BD Perm/Wash™ buffer and 20 µL antibody. After incubation for 20 minutes on ice, cells were centrifuged and washed with BD Perm/Wash™ buffer. After that, BD Perm/Wash™ buffer was added and then the antibody is incubated for thirty minutes in room temperature. Each tube was rinsed again with 1 mL BD Perm/Wash™ buffer, re-centrifuged then added 300 µL BD Perm/Wash™ buffer.

Statistical analysis

All data were presented as the mean \pm standard deviation of triplicate parallel measurements. Statistical analysis used SPSS 10.0 and the data were analyzed with the unpaired t-test using a significance level of $p < 0.01$.

Results

Apoptosis assay

Apoptosis assay was performed on cell populations with and without areca nut extract for 24 and 48 hours. The IC_{50} dose of extract used was 629.50 μ g/mL for HSC-2 cells. The percentage value of the cell population count was calculated based on the division of four quadrants, i.e. the viable cells (lower left quadrant; AV-/PI-), early apoptosis (lower right quadrant; AV+/PI-), late apoptosis (upper right quadrant; AV+/PI+), and necrotic cells (upper left quadrant; AV-/PI+). As shown in Figure 1. A.b and 1. B; left panel, apoptotic activity over 24 hours increased after areca nut extract treatment, as much as $83.73 \pm 0.02\%$. This number is 67.85% higher, or approximately 5.3 times higher, compared to controls ($15.88 \pm 0.24\%$). The difference was statistically significant at $p < 0.01$. This increase was significant, suggesting that a reduction of viability represents mostly apoptosis.

Then, we examined the effect of areca nut extract after 48 hours of exposure. The result showed that areca nut also induced an increase in late apoptotic cells after 48 hours. As can be seen in Figure 1. A. The late apoptotic cells with red dots in the upper right quadrant indicate that areca nut has high cytotoxicity. Therefore, it can be concluded that areca nut extract is capable of inducing apoptosis in HSC-2 cells. Graphs showing a comparison of mean percentage between control cells and after areca nut extract exposure is shown in Figure 1. B; right panel.

Although areca nut extract exposure can increase the number of late apoptosis cells more than 80% in HSC-2 cells, the viability of HSC-2 cells without areca nut extract exposure in 48 hours was $34.12\% \pm 2.60\%$, $p < 0.01$ (Figure 1. A. c). It means that the viability of the HSC-2 cells without areca nut exposure which was less than 40% resulted in a greater proportion of apoptotic cells. In our opinion, the incidence of apoptotic cells did not fully influenced by the areca nut extract exposure, but also from the small number of the viable cells. The same condition was also seen on HSC-3 cells in 24 hours, where the viability of HSC-3 cells without areca nut extract exposure was only less than 30% ($27.48\% \pm 0.67\%$, $p < 0.01$) (Figure 2. A. a).

The apoptosis assay performed in HSC-3 cells demonstrates a different result to that of HSC-2 cells after areca nut extract exposure for 24 hours. There was no increase in late apoptosis but, instead, the early apoptotic cell population increased (37.48% to 70.10%, $p < 0.01$) (Figure 2. B; left panel). However, cells treated for 48 hours showed a significant increases in early and late apoptotic cell percentage ($18.20 \pm 1.03\%$ and $70.1 \pm 0.25\%$, $p < 0.01$, respectively) (Figure 2.B; right panel).

Caspase-3 assay

We examined whether the areca nut extract can induce the activity of caspase-3 activity by using flow cytometry. The values

were calculated based on the percentage of the cell population with caspase-3 enzyme activity during apoptosis. The percentage of control and test cells in the same quadrant were compared. The M_1 quadrant demonstrates the number of living cells without active caspase-3, whereas M_2 quadrant is a number of apoptotic cells with active caspase-3 (Figure 3A). The results indicate that the areca nut extract can increase the number of HSC-2 cells with active caspase-3 significantly after 24 and 48 hours exposure ($85.93 \pm 0.01\%$ and $97.05 \pm 0.01\%$, $p < 0.01$, respectively) (Figure 3B). The untreated cells (M_1) were primarily negative for the presence of active caspase-3, whereas more than one-third of the treated cells were positive for active caspase-3 staining (M_2). These values are in accordance with the results of the apoptosis test, as an increase in caspase-3 corresponds with an increase of the late apoptosis cell population.

Next, the high number of HSC-3 cells with active caspase-3, was seen increasing 8.61 times higher than control cells after 48 hours of exposure (Figure 4B). Population distribution is also clearly shown between cells with and without extract exposure.

Dataset 1. Output flow cytometry files for all experiments with statistical analysis output files

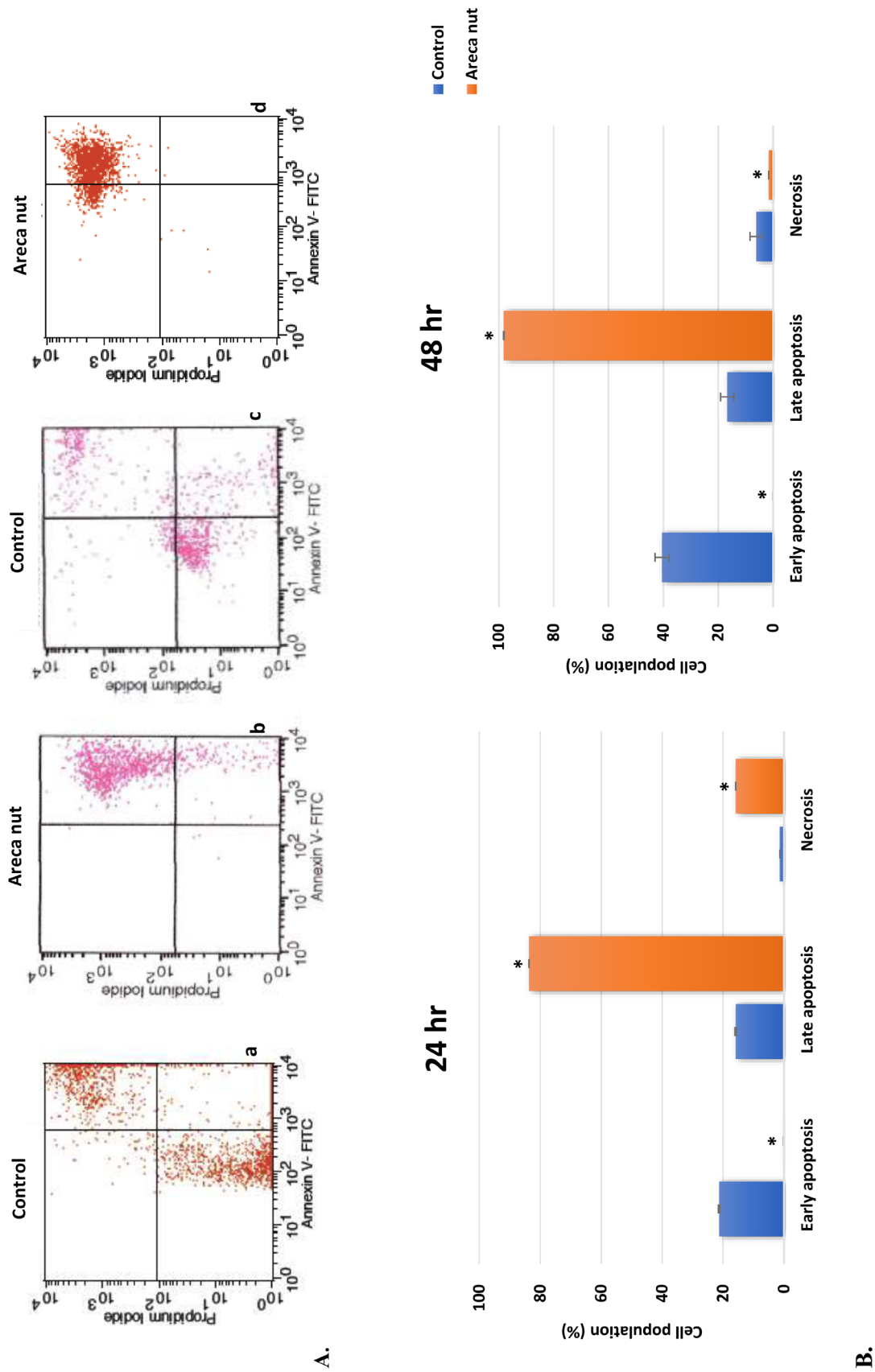
<http://dx.doi.org/10.5256/f1000research.14856.d206338>

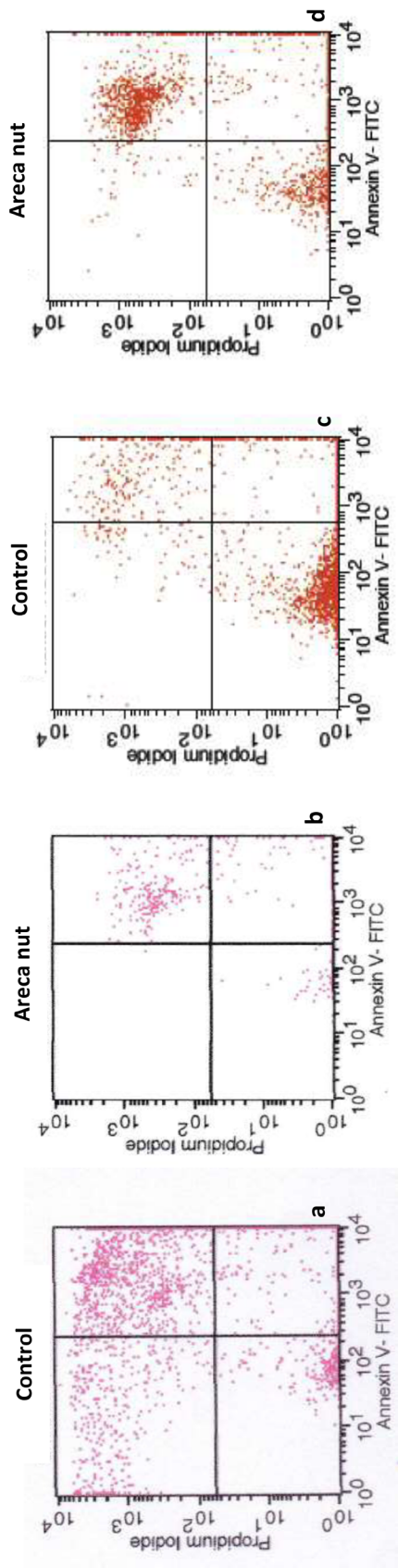
Discussion

This study is a novel or first study which clearly reveals the potential cytotoxicity effect and mechanism of action of areca nut in oral squamous cell lines. Our preliminary study showed that the areca nut has a high content of total phenolic and flavonoid compounds, and showed cytotoxicity activity against HSC-2 and HSC-3 cells³⁸. In the present study, we found that areca nut extract can induce apoptosis in HSC-2 and HSC-3 cells with optimum time after 48 hours exposure. This result correlates with the previous finding that the ethanolic extract of areca nut treatment (IC_{50} 77 μ g/mL) for 48 hours could inhibit the growth of MCF-7 cells³⁹.

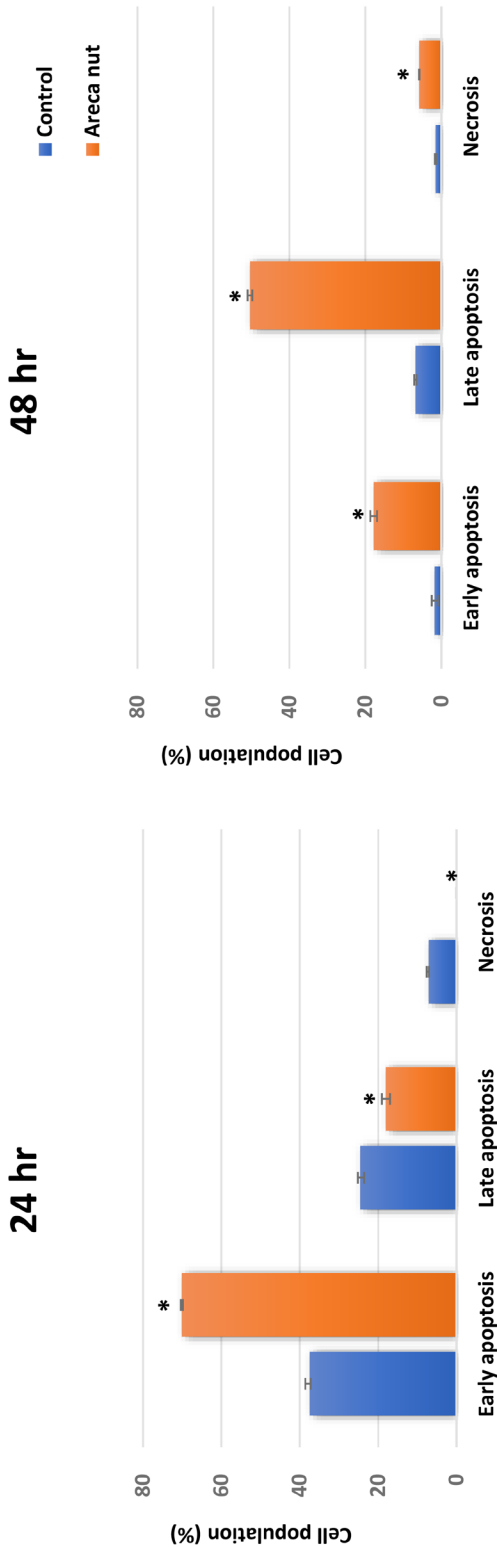
Although the extract has the same optimum time in both cells, we found that HSC-3 cells have a greater ability to withstand apoptosis than HSC-2 cells. This result is possible because of the characteristic of HSC-3 cells is different from HSC-2 cells. Both cells have mutated *p53* tumor-suppressor gene^{35,40}. The HSC-3 cell line has high metastatic potential with a longer doubling time than HSC-2. The HSC-2 cell line has neither invasive nor metastatic potential. However, we do not fully understand the different mechanism that occurred between the two cell types in response to the areca nut. Further studies to investigate this issue will be needed.

Analysis of apoptotic cells using flow cytometry demonstrated that the viabilities of the HSC-2 and HSC-3 cells without areca nut exposure in 48 and 24 hours respectively are low (less than 40%). This condition suggests that the preparation of the staining process in flow cytometry itself may trigger the death of the cells (apoptosis or necrosis). Flow cytometry analysis was performed to identify the loss of plasma membrane asymmetry



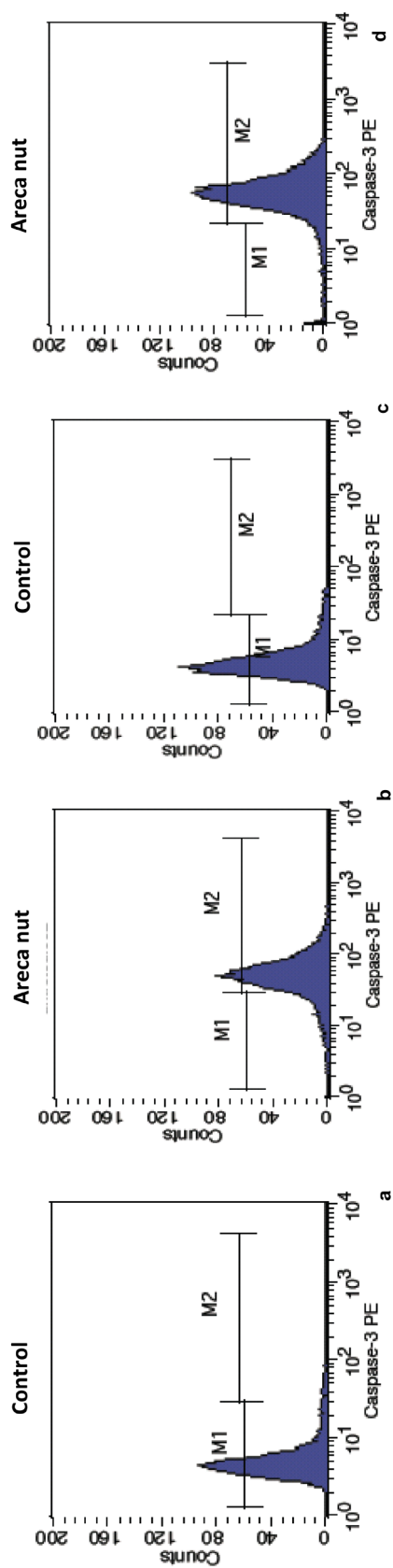


A.

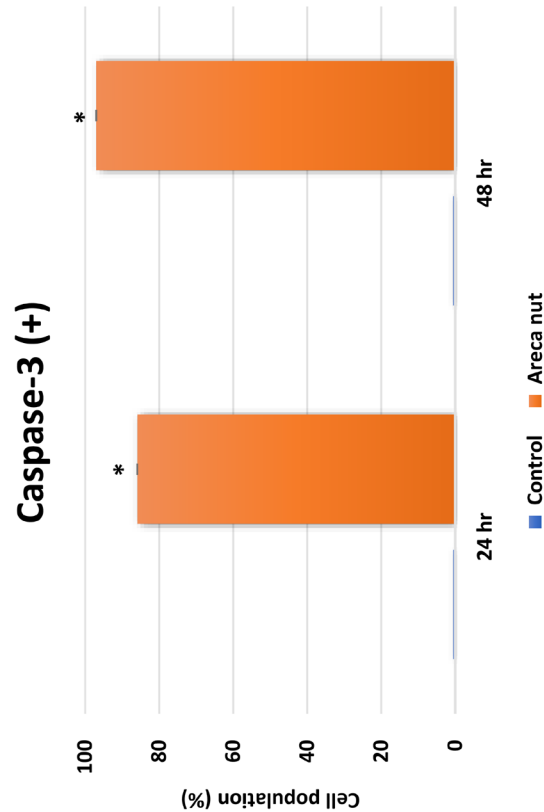


B.

Figure 2. A. Flow cytometry analysis for apoptosis-inducing activities of areca nut on HSC-3 cells, a and b: 24 hr; c and d: 48 hr. **B.** Graph of comparison between HSC-3 cell percentage with and without 24 and 48 hours areca nut extract exposure at IC₅₀ (164.06 µg/mL). The percentage value is mean±SD. Unpaired t-test shows the correlation of the means between control group and test group. * $p < 0.01$.



A.



B.

Figure 3. A. Flow cytometry analysis for caspase-3 activity inducing activities of areca nut on HSC-2 cells, a and b: 24 hr, c and d: 48 hr. **B.** Graph of comparison between the percentage of HSC-2 cells with active caspase-3 with and without areca nut extract exposure after 24 and 48 hours at IC_{50} (629.50 μ g/mL). The percentage value is mean \pm SD. Unpaired t-test shows the correlation of the means between control group and test group. * $p < 0.01$.

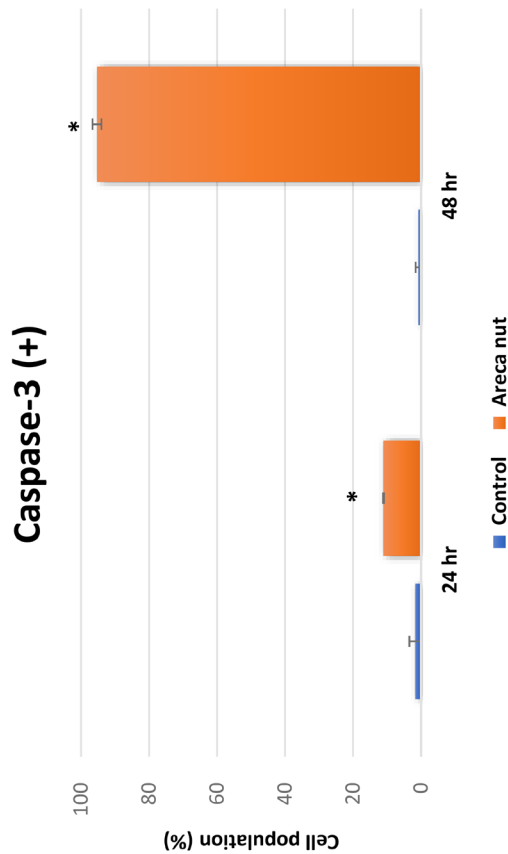
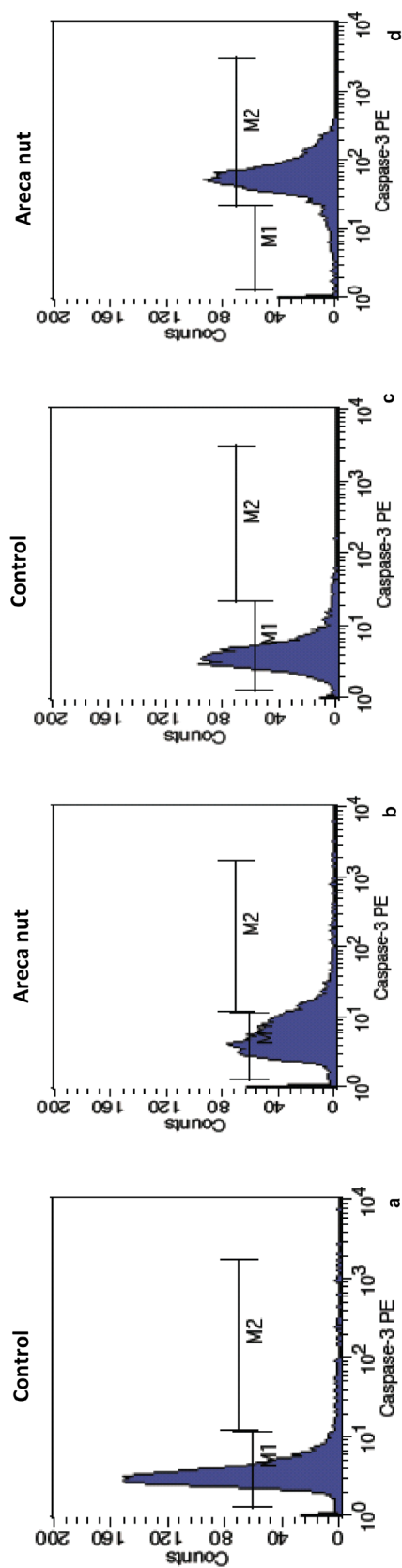


Figure 4. A. Flow cytometry analysis for caspase-3 activity inducing activities of areca nut on HSC-3 cells, a and b: 24 hr; c and d: 24 hr; c and d: 24 hr. **B.** Graph of comparison between the percentage of HSC-3 cells with active caspase-3 with and without areca nut extract exposure after 24 and 48 hours at IC_{50} (164.06 μ g/mL). The percentage value is mean \pm SD. Unpaired t-test shows the correlation of the means between control group and test group. * $p < 0.01$.

in cells. In apoptotic cells, the membrane phospholipid phosphatidylserine (PS) is translocated from the inner to the outer leaflet of the plasma membrane, thereby exposing PS to the external cellular environment. The cells are processed with enzymatic degradation, centrifugation, and/or filtration to isolate the cells of interest, and the resulting cellular suspension is “stained” with fluorescent antibodies. The small number of viable cells without areca nut extract exposure limits the conclusions that can be drawn from our results. To ascertain the biological mechanism underlying areca nut-induced death, apoptotic cell images should be obtained with a fluorescent microscope.

The present study demonstrated that the caspase-3 activity as an effector caspase is shown to be related with late apoptosis activity because of the increase of caspase-3 with increasing late apoptotic cells percentage in both cells. Analysis of caspase activity confirmed that apoptosis might be the major mechanism of cell death induced by areca nut. As far as we know, there is no similar report regarding the caspase-3 activity induced by areca nut extract, but this result is similar to several previous studies that used plants containing flavonoids to increase caspase activity in cancer cells^{41–43}. This finding may have biological implications in cancer treatment. The caspases inside cells are in an inactive form (procaspase), but activation induces the production of other caspases leading to cell death through proteolytic activity^{44,45}. Caspase-3 activation is a crucial component in the apoptotic signaling cascade. Based on the results obtained from our study, the apoptosis pathway involved in areca nut-induced cell death in both cancer cell lines may be through the extrinsic and intrinsic pathways. Further investigation

is needed to clarify the exact mechanism through which areca nut induces apoptosis.

Conclusion

Apoptosis is the main cell death mechanism in HSC-2 and HSC-3 cells after areca nut extract exposure for 24 and 48 hours. This is shown by the high population of early and late apoptotic cells in HSC-2 and HSC-3 cells compared to cells without extract exposure. The optimum time of apoptosis occurrence after areca nut extract is 48 hours. We postulated that one of the possible action for the apoptosis effects of this extract occurred through increased activities of the caspase-3 enzyme. This is indicated by the high activity of caspase-3 in HSC-2 and HSC-3 cells compared to cells without extract exposure, which also indicates cell death that occurred was late apoptosis. There is great potential to develop areca nut as an adjuvant chemotherapeutic agent for oral squamous cell carcinoma treatment, hence additional studies are needed, particularly *in vivo* studies to further evaluate the observed effect.

Data availability

Dataset 1: Output flow cytometry files for all experiments with statistical analysis output files [10.5256/f1000research.14856.d206338](https://doi.org/10.5256/f1000research.14856.d206338)⁴⁶.

Grant information

The author(s) declared that no grants were involved in supporting this work.

References

- Neville BW, Damm DD, Allen CM, *et al.*: **Squamous cell carcinoma in Oral and maxillofacial pathology**. 2nd ed. Philadelphia, Pennsylvania: Saunders; 2002.
- Choi S, Myers JN: **Molecular pathogenesis of oral squamous cell carcinoma: Implications for therapy**. *J Dent Res*. 2008; **87**(1): 14–32.
[PubMed Abstract](#) | [Publisher Full Text](#)
- Daucas H, Garcea G, Neal CP, *et al.*: **Chemoprevention of pancreatic cancer: a review of the molecular pathways involved, and evidence for the potential for chemoprevention**. *Pancreatology*. 2006; **6**(5): 429–39.
[PubMed Abstract](#) | [Publisher Full Text](#)
- Kanduc D, Mittelman A, Serpico R, *et al.*: **Cell death: apoptosis versus necrosis (review)**. *Int J Oncol*. 2002; **21**(1): 165–70.
[PubMed Abstract](#) | [Publisher Full Text](#)
- Kuno T, Tsukamoto T, Hara A, *et al.*: **Cancer chemoprevention through the induction of apoptosis by natural compounds**. *J Biophys Chem*. 2012; **3**(2): 156–73.
[Publisher Full Text](#)
- Hassan M, Watari H, AbuAlmaaty A, *et al.*: **Apoptosis and molecular targeting therapy in cancer**. *BioMed Res Int*. 2014; **2014**: 150845.
[PubMed Abstract](#) | [Publisher Full Text](#) | [Free Full Text](#)
- Hongmei Z: **Extrinsic and Intrinsic Apoptosis Signal Pathway Review**. In *Apoptosis and Medicine*. Edited Volume: 3–23. 2012.
[Publisher Full Text](#)
- Li SX, Chai L, Cai ZG, *et al.*: **Expression of survivin and caspase 3 in oral squamous cell carcinoma and peritumoral tissue**. *Asian Pac J Cancer Prev*. 2012; **13**(10): 5027–31.
[PubMed Abstract](#) | [Publisher Full Text](#)
- Callixto JB: **Efficacy, safety, quality control, marketing and regulatory guidelines for herbal medicines (phytotherapeutic agents)**. *Braz J Med Biol Res*. 2000; **33**(2): 179–89.
[PubMed Abstract](#) | [Publisher Full Text](#)
- Abbot R: **Documenting traditional medicine knowledge**. Los Angeles: WIPO; 2014.
[Reference Source](#)
- Barnes PM, Bloom B, Nahin RL: **Complementary and alternative medicine use among adults and children: United States, 2007**. *Natl Health Stat Report*. 2008; **12**(1): 1–23.
[PubMed Abstract](#) | [Publisher Full Text](#)
- Naveen Kumar DR, Cijo George V, Suresh PK, *et al.*: **Cytotoxicity, apoptosis induction and anti-metastatic potential of *Oroxylum indicum* in human breast cancer cells**. *Asian Pac J Cancer Prev*. 2012; **13**(6): 2729–34.
[PubMed Abstract](#) | [Publisher Full Text](#)
- Mukherjee AK, Basu S, Sarkar N, *et al.*: **Advances in cancer therapy with plant based natural products**. *Curr Med Chem*. 2001; **8**(12): 1467–86.
[PubMed Abstract](#) | [Publisher Full Text](#)
- Safarzadeh E, Sandoghchian Shotorbani S, Baradaran B: **Herbal medicine as inducers of apoptosis in cancer treatment**. *Adv Pharm Bull*. 2014; **4**(Suppl 1): 421–27.
[PubMed Abstract](#) | [Publisher Full Text](#) | [Free Full Text](#)
- Burton-Bradley BG: **Arecaidism: betel chewing in transcultural perspective**. *Can J Psychiat*. 1979; **24**(5): 481–84.
[PubMed Abstract](#) | [Publisher Full Text](#)
- Hamsar MN, Ismail S, Mordi M, *et al.*: **Antioxidant activity and the effect of different parts of *Areca catechu* extracts on Glutathione-S-Transferase activity *in vitro***. *Free Rad Antiox*. 2011; **1**(1): 28–33.
[Publisher Full Text](#)
- Wetwitayaklung P, Phaechamud T, Limmatvapirat C, *et al.*: **The study of**

- antioxidant capacity in various parts of *Areca catechu* L. *Naresuan University Journal*. 2006; 14(1): 1–14.
[Reference Source](#)
18. Toprasri P, Chinpaisal C, Phaechamud T: Comet assay to test antioxidative effects of extracts from different parts of *Areca catechu* L. *Thai Pharm Health Sci J*. 2008; 3(3): 309–15.
[Reference Source](#)
 19. Surendiran NS, Yuvara TV: Antibacterial, antioxidant, *in vitro* & *in vivo* immunomodulatory studies of *Areca catechu* in mice. *JPR*. 2010; 3(11): 2678–81.
[Reference Source](#)
 20. Zhang X, Wu J, Han Z, *et al.*: Antioxidant and Cytotoxic Phenolic Compounds of Areca Nut (*Areca catechu*). *Chem Res Chinese Universities*. 2010; 26(1): 161–64.
[Reference Source](#)
 21. Zhang WM, Wei J, Chen WX, *et al.*: The Chemical Composition and Phenolic Antioxidants of Areca (*Areca catechu* L.) Seeds. *ICABE-Advances in Biomedical Engineering*. 2011; 1–2: 16–22.
[Reference Source](#)
 22. Bhandare AM, Kshirsagar AD, Vyawahare NS, *et al.*: Potential analgesic, anti-inflammatory and antioxidant activities of hydroalcoholic extract of *Areca catechu* L. nut. *Food Chem Toxicol*. 2010; 48(12): 3412–17.
[PubMed Abstract](#) | [Publisher Full Text](#)
 23. Hannan A, Karan S, Chatterjee TK: A comparative study of *in vitro* antioxidant activity of different extracts of Areca seed collected from *Areca catechu* plant grown in Assam. *Int J Pharm Pharm Sci*. 2012; 4(2): 420–27.
[Reference Source](#)
 24. Jaiswal P, Kumar P, Singh VK, *et al.*: *Areca catechu* L.: A valuable herbal medicine against different health problems. *Res J Med Plant*. 2011; 5(2): 145–52.
[Publisher Full Text](#)
 25. Mondal S, Bhattacharya S, Biswas M: Antidiabetic activity of *Areca catechu* leaf extracts against streptozotocin induced diabetic rats. *JAPER*. 2012; 2(1): 10–18.
[Reference Source](#)
 26. Cyriac MB, Pai V, Varghese I, *et al.*: Antimicrobial properties of *Areca catechu* (*Areca nut*) husk extracts against common oral pathogens. *IJRAP*. 2012; 3(1): 81–85.
[Reference Source](#)
 27. Karphrom A, Suknaisilp S, Pradeepasaena P, *et al.*: Anti-microbial activities of betel nut (*Areca catechu*) Linn. seed extracts. *International Conference on the Role of Universities in Hands-On Education Rajamangala University of Technology Lanna, Thailand*. 2009; 209–15.
[Reference Source](#)
 28. Jiang JH, Jung SY, Kim YC, *et al.*: Antimalarial effects of *Areca catechu* L. *Korean J Orient Physiol Pathol*. 2009; 23(2): 494–98.
[Reference Source](#)
 29. Pithayanukul P, Nithitanakool S, Bavovada R: Hepatoprotective potential of extracts from seeds of *Areca catechu* and nutgalls of *Quercus infectoria*. *Molecules*. 2009; 14(12): 4987–5000.
[PubMed Abstract](#) | [Publisher Full Text](#)
 30. Amudhan MS, Begum VH, Hebbar KB: A review on phytochemical and pharmacological potential of *Areca catechu* L. seed. *IJPSR*. 2012; 3(11): 4151–57.
[Publisher Full Text](#)
 31. Lee KK, Choi JD: The effects of areca catechu L extract on anti-aging. *Int J Cosmet Sci*. 1999; 21(4): 285–95.
[PubMed Abstract](#) | [Publisher Full Text](#)
 32. Byun SJ, Kim HS, Jeon SM, *et al.*: Supplementation of *Areca catechu* L. extract alters triglyceride absorption and cholesterol metabolism in rats. *Ann Nutr Metab*. 2001; 45(6): 279–84.
[PubMed Abstract](#) | [Publisher Full Text](#)
 33. Chempakam B: Hypoglycaemic activity of arecoline in betel nut *Areca catechu* L. *Indian J Exp Biol*. 1993; 31(5): 474–75.
[PubMed Abstract](#)
 34. Zain RB: Cultural and dietary risk factors of oral cancer and precancer—a brief overview. *Oral Oncol*. 2001; 37(3): 205–10.
[PubMed Abstract](#) | [Publisher Full Text](#)
 35. Kamiya Y, Ohshima T: The Individual Cell Properties of Oral Squamous Cell Carcinoma and p53 Tumor Suppressor Gene Mutation. *Oral Sci Intl*. 2005; 2(2): 104–17.
[Publisher Full Text](#)
 36. Okamura M, Shimada J, Sakagami H: Comparative analysis of cell death induction by cisplatin and 5-FU in human oral squamous and hepatocellular carcinoma cell lines. *Anticancer Res*. 2008; 28(1A): 253–9.
[PubMed Abstract](#)
 37. Iida S, Shimada J, Sakagami H: Cytotoxicity induced by docetaxel in human oral squamous cell carcinoma cell lines. *In vivo*. 2013; 27(3): 321–332.
[PubMed Abstract](#)
 38. Sari LM, Subita GP, Auerkari EI: Potential antioxidant and cytotoxic activity of areca nut (*Areca catechu* Linn.) extract in human oral squamous cell carcinoma and keratinocyte cells. *Asian J Pharm Clin Res*. 2017; 10(10): 286–91.
[Publisher Full Text](#)
 39. Meiyanto E, Handayani S, Susidarti RA, *et al.*: Chloroform fraction of *Areca catechu* L. induces apoptosis and decreases Bcl2 expression on MCF-7 cells. *Artocarpus*. 2008; 8(2): 55–69.
 40. Sakai E, Tsuchida N: Most human squamous cell carcinomas in the oral cavity contain mutated p53 tumor-suppressor genes. *Oncogene*. 1992; 7(5): 927–933.
[PubMed Abstract](#)
 41. Lin CC, Yang JS, Cheng JT, *et al.*: Berberine induces apoptosis in human HSC-3 oral cancer cells via simultaneous activation of the death receptor-mediated and mitochondrial pathway. *Anticancer Res*. 2007; 27(5A): 3371–3378.
[PubMed Abstract](#)
 42. Das A, Banik NL, Ray SK: Flavonoids activated caspases for apoptosis in human glioblastoma T98G and U87MG cells but not in human normal astrocytes. *Cancer*. 2010; 116(1): 164–176.
[PubMed Abstract](#) | [Publisher Full Text](#) | [Free Full Text](#)
 43. Alshatwi AA: Catechin hydrate suppresses MCF-7 proliferation through TP53/Caspase-mediated apoptosis. *J Exp Clin Cancer Res*. 2010; 29(1): 167.
[PubMed Abstract](#) | [Publisher Full Text](#) | [Free Full Text](#)
 44. Parrish AB, Freil CD, Kornbluth S: Cellular mechanisms controlling caspase activation and function. *Cold Spring Harb Perspect Biol*. 2013; 5(6): pii: a008672.
[PubMed Abstract](#) | [Publisher Full Text](#) | [Free Full Text](#)
 45. Hashimoto T, Kikkawa U, Kamada S: Contribution of caspase(s) to the cell cycle regulation at mitotic phase. *PLoS One*. 2011; 6(3): e18449.
[PubMed Abstract](#) | [Publisher Full Text](#) | [Free Full Text](#)
 46. Sari LM, Subita GP, Eauerkari EI: Dataset 1 in: Areca nut extract demonstrated apoptosis-inducing mechanism by increased caspase-3 activities on oral squamous cell carcinoma. *F1000Research*. 2018.
<http://www.doi.org/10.5256/f1000research.14856.d206338>

Open Peer Review

Current Peer Review Status:  

Version 5

Reviewer Report 29 July 2019

<https://doi.org/10.5256/f1000research.21549.r50623>

© 2019 Ikeda M. This is an open access peer review report distributed under the terms of the [Creative Commons Attribution License](#), which permits unrestricted use, distribution, and reproduction in any medium, provided the original work is properly cited.



Masa-Aki Ikeda 

Graduate School of Medical and Dental Sciences, Tokyo Medical and Dental University, Tokyo, Japan

The revised manuscript by Sari *et al.* was improved well and adequately answered to the reviewer's comments.

Competing Interests: No competing interests were disclosed.

I confirm that I have read this submission and believe that I have an appropriate level of expertise to confirm that it is of an acceptable scientific standard.

Author Response 30 Jul 2019

Liza Sari, Syiah Kuala University, Banda Aceh, Indonesia

Dear Prof Masa-Aki Ikeda,

We would like to thank you for your partnership during this peer-review process
Your cooperation, time, and energy mean a lot to us.

We would also like to apologize for any inconvenience that we might have caused you during the review.

We are very hopeful that we could be better next time.

Once again, we would like to thank you for your cooperation and understanding during our review process.

Regards,
Liza

Competing Interests: No competing interests

Version 4

Reviewer Report 10 April 2019

<https://doi.org/10.5256/f1000research.19932.r44331>

© 2019 Ikeda M. This is an open access peer review report distributed under the terms of the [Creative Commons Attribution License](#), which permits unrestricted use, distribution, and reproduction in any medium, provided the original work is properly cited.

**Masa-Aki Ikeda**

Graduate School of Medical and Dental Sciences, Tokyo Medical and Dental University, Tokyo, Japan

The revised manuscript by Irna et al. was improved, but there is still a lot of room for improvement as follows:

Methods

Page 4

Cell culture

In lines 18 – 20, the authors mention that HSC-2 is the cell line without the p53 gene mutation. However, it is a misunderstanding of the authors. It has been reported that HSC-2 has p53 gene mutation.

Sakai E, Tsuchida N.: Most human squamous cell carcinomas in the oral cavity contain mutated p53 tumor-suppressor genes¹.

Page 5

Results

First paragraph:

In lines 1 – 8, the authors should state that the results of this paragraph are shown in Figure 1Aa and b.

In lines 8 – 14, the authors should also indicate that the results of this paragraph are shown in Figure 1B, left panel.

In lines 8 – 14, the authors mentioned that the percentage late apoptotic cell number 24 hours after areca nut treatment is $83.82 \pm 15.86\%$ and $15.54 \pm 23.52\%$. However, the width of the error bars in the corresponding graph (Figure 1B, left panel) does not reflect the standard deviation (i.e. $\pm 15.86\%$ and $\pm 23.52\%$).

Second paragraph:

In line 4, Figure 1 should be changed to Figure 1A.

In line 4, is there any difference between pink and red dots?

In line 9, Figure 1 should be changed to Figure 1B.

Third paragraph:

In lines 3-6, the authors mentioned that, after 24 hr areca nut treatment, there was an increase in early apoptotic cell populations from untreated to treated cells (1.77% to 17.88%, respectively). However, this description does not match the graph of Figure 2B, left panel, in which the

percentage of early apoptotic cells of untreated and treated cells appears to be about 40% and 70%, respectively.

Fourth paragraph:

In lines 1 – 3, do the authors repeat the description of the previous paragraph (Figure 2B)? If so, the authors need to eliminate redundancy. The authors state that in HSC-3 cell lines, areca nut extract induced only early apoptosis after 24 hours. However, late apoptotic cells were apparently detected in Figure 2B, left panel. The authors need to describe the results more accurately. In lines 3-7, if the authors mentioned their results here, the results should be described in the past tense and indicated as (data not shown). Or if the authors intended to state general facts that occur in the process of apoptosis, such explanations are not necessary here and thus should be excluded from the text.

Fifth paragraph, Caspase-3 assay:

In line 2, "The value is" should be changed to "The values are".

In line 8 - 11, the authors state that areca nut extract caused an increase in the number of cells with active caspase-3 which is $85.94 \pm 56.86\%$. The standard deviation is very large. Isn't it impossible? I am wondering if the statistical calculation is correct. While the authors state that the number of cells without activating caspase-3 ($14.37 \pm 11.27\%$ after 24 hours exposure), such cells appear to be almost 0% in Figure 3B, left panel. Again, I am wondering if the width of the error bars in Figure 3B does not reflect the standard deviations of both control and areca nut-treated cell populations.

In line 11, "This value is" must be "These values are"?

In lines 16 – 17, the authors state that the similar patterns were seen in 24 and 48 hours after exposure (Figure 3A). However, as they already mentioned about 24 hours above, they should change the sentence to "the similar patterns were seen in 48 hours after exposure (Figure 3Ac-d, and 3B, left panel).

Sixth paragraph:

In line 1, The authors state that "the high concentration of active caspase-3". Since the authors counted the number of caspase-3 positive cells by flow cytometry, "concentration" is inappropriate.

As in the previous fifth paragraph, the authors should state the number of cells with or without active caspase-3 after 48 hr.

Discussion:

Since Discussion is too long and redundant, the authors should make them more concise by removing parts that are not directly related to their results in this study.

Page 10:

Fourth and fifth paragraphs

The authors discuss the difference of the sensitivity of HSC-2 and HSC-3 cell lines based on the fact that HSC-3, but not HSC-2, has p53 gene mutation. However, as mentioned above, both cell lines carry p53 gene mutation. Thus, the authors should reorganize these paragraphs.

Figures

Figure 1A – 4A:

The authors should indicate when each data (i.e. a, b, c, and d) was obtained after areca nut treatment. Are (a and b) and (c and d) 24 hr and 48 hr, respectively?

Figure 1B – 4B:

The authors should check whether the standard deviation of each data is accurately reflected as the error bar of the corresponding graph.

References

1. Sakai E, Tsuchida N: Most human squamous cell carcinomas in the oral cavity contain mutated p53 tumor-suppressor genes. *Oncogene*. 1992; **7** (5): 927-33 [PubMed Abstract](#)

Is the work clearly and accurately presented and does it cite the current literature?

Partly

Is the study design appropriate and is the work technically sound?

Yes

Are sufficient details of methods and analysis provided to allow replication by others?

Yes

If applicable, is the statistical analysis and its interpretation appropriate?

Partly

Are all the source data underlying the results available to ensure full reproducibility?

Yes

Are the conclusions drawn adequately supported by the results?

Yes

Competing Interests: No competing interests were disclosed.

I confirm that I have read this submission and believe that I have an appropriate level of expertise to confirm that it is of an acceptable scientific standard, however I have significant reservations, as outlined above.

Author Response 09 Jul 2019

Liza Sari, Syiah Kuala University, Banda Aceh, Indonesia

Dear Prof Masa Aki Ikeda,
Thank you very much for all of the correction you've made.

Here are the revisions that I've made for Version 5:

1. Statement before revision

Cell culture

.....

The HSC-2 cell line was also derived from an oral squamous cell carcinoma of the tongue but without the *p53* gene mutation (JCRB0622)

Revision:Cell culture

.....

The HSC-2 cell line was derived from an oral squamous cell carcinoma of the mouth with the p53 splice intron 6 mutation (JCRB0622)

2. Statement before revisionResultsApoptosis assay

The results of the apoptosis assay in 24 hours showed an increase in percentage cell number after areca nut extract treatment undergoing late apoptosis, as much as $83.82 \pm 15.86\%$. This number is 68.28% higher compared to controls, or approximately 5.4 times higher than control ($15.54 \pm 23.52\%$).

Revision:ResultsApoptosis assay

As shown in Figure 1. A.b and 1. B; left panel, the apoptosis activity in 24 hours increased after areca nut extract treatment, as much as $83.73 \pm 0.02\%$. This number is 67.85% higher compared to controls, or approximately 5.3 times higher than control ($15.88 \pm 0.24\%$).

3. Statement before revisionResultsApoptosis assayParagraph 2

As can be seen in Figure 1, late apoptotic cells with pink and red dots in upper right quadrant indicated that areca nut was high cytotoxicity.

Revision:ResultsApoptosis assayParagraph 2

As can be seen in Figure 1. A, the late apoptotic cells with red dots in upper right quadrant indicated that areca nut was high cytotoxicity.

4. Statement before revisionResultsApoptosis assay

Graphs showing a comparison of mean percentage between control cells and after areca nut extract exposure is shown in Figure 1

Revision:ResultsApoptosis assay

Graphs showing a comparison of mean percentage between control cells and after areca nut extract exposure is shown in Figure 1. B; right panel.

5. Statement before revision

Results

Figure 1.

A. Flow cytometry analysis for apoptosis-inducing activities of areca nut on HSC-2 cells, a and c: control; b and d: treated with areca nut.

Revision:

Results

Figure 1.

A. Flow cytometry analysis for apoptosis-inducing activities of areca nut on HSC-2 cells, a and b: 24 hr; c and d: 48 hr.

6. Statement before revision

Results

There was no increase in late apoptosis but, instead, the early apoptotic cell population increased. There was an increase in early apoptotic cell populations from untreated to treated cells (1.77% to 17.88%, respectively).

Revision:

Results

There was no increase in late apoptosis but, instead, the early apoptotic cell population increased (37.48% to 70.10%) (Figure 2. B; left panel). Next, the apoptosis assay in HSC-3 cells after 48 hours exposure, however, showed significant increases in early and late apoptotic cell percentage ($18.20 \pm 1.03\%$ and $70.1 \pm 0.25\%$, respectively) (Figure 2.B; right panel).

7. Statement before revision

Results

Figure 2.

A. Flow cytometry analysis for apoptosis-inducing activities of areca nut on HSC-3 cells, a and c: control; b and d: treated with areca nut.

Revision:

Results

Figure 2.

A. Flow cytometry analysis for apoptosis-inducing activities of areca nut on HSC-3 cells, a and b: 24 hr; c and d: 48 hr.

8. Statement before revision

Results

Caspase-3 assay

The caspase-3 assay was performed in triplicate in HSC-2 cells also using flow cytometry. The value is calculated based on the percentage of the cell population with caspase-3 enzyme activity during apoptosis. The percentage of control and test cells in the same quadrant was compared. The M₁ quadrant demonstrates the number of living cells without active caspase-3, whereas M₂ quadrant is a number of apoptotic cells with active caspase-3. Areca nut extract caused an increase in the number of cells with active caspase-3 which is $85.94 \pm 56.86\%$ more than the number of cells without activating caspase-3 ($14.37 \pm 11.27\%$ after 24 hours exposure). This value is in accordance with the results of the apoptosis test, as an increase in caspase-3 corresponds with an increase of late apoptosis cell population. Untreated cells (M₁) were primarily negative for the presence of active caspase-3, whereas greater than one-third of the treated cells were positive for active caspase-3 staining (M₂). The similar patterns were seen in 24 and 48 hours after exposure (Figure 3A). This shows that the ability of the extract to induce apoptosis is increased with longer exposure in HSC-2 cells.

Revision:

Results

Caspase-3 assay

We examined whether the areca nut extract can induce the activity of caspase-3 activity by using flow cytometry. The values are calculated based on the percentage of the cell population with caspase-3 enzyme activity during apoptosis. The percentage of control and test cells in the same quadrant were compared. The M₁ quadrant demonstrates the number of living cells without active caspase-3, whereas M₂ quadrant is a number of apoptotic cells with active caspase-3 (Figure 3A). The results indicated that the areca nut extract can increase the number of HSC-2 cells with active caspase-3 significantly after 24 and 48 hours exposure ($85.93 \pm 0.01\%$ and $97.05 \pm 0.01\%$, respectively) (Figure 3B). The untreated cells (M₁) were primarily negative for the presence of active caspase-3, whereas greater than one-third of the treated cells were positive for the active caspase-3 staining (M₂). These values are in accordance with the results of the apoptosis test, as an increase in caspase-3 corresponds with an increase of the late apoptosis cell population.

9. Statement before revision

Results

Figure 3.

A. Flow cytometry analysis for caspase-3 activity inducing activities of areca nut on HSC-2 cells, a and c: control; b and d: treated with areca nut.

Revision:

Results

Figure 3.

A. Flow cytometry analysis for caspase-3 activity inducing activities of areca nut on HSC-2 cells, a and b: 24 hr; c and d: 48 hr.

10. Statement before revision

Results

The high concentration of active caspase-3 activated in HSC-3 cells, which is increasing 126 times higher than control cells after 48 hours of exposure (Figure 4). Population distribution is also clearly shown between cells with and without extract exposure.

Revision:

Results

Next, the high number of HSC-3 cells with active caspase-3, was seen increasing 8.61 times higher than control cells after 48 hours of exposure (Figure 4B).

11. Statement before revision

Results

Figure 4.

A. Flow cytometry analysis for caspase-3 activity inducing activities of areca nut on HSC-3 cells, a and c: control; b and d: treated with areca nut. Figure 4.

Revision:

Results

Figure 4

A. Flow cytometry analysis for caspase-3 activity inducing activities of areca nut on HSC-3 cells, a and b: 24 hr; c and d: 24 hr.

12. Statement before revision

Discussion

Paragraph 1

This study is a novel or first study which clearly reveals the potential cytotoxicity effect and mechanism of action of areca nut in oral squamous cell lines. Our preliminary study showed that the areca nut has a high content of total phenolic and flavonoid ³⁸. The areca nut has chemosensitivity of cancer cells in different concentrations. We performed an MTS assay to observe the areca nut extract on cell viability. Five doses were adding into cancer cells, which were 160, 320, 640, 1280, and 2560 µg/mL in HSC-2, HSC-3, and HaCat cells ³⁸. We found that the areca nut extract was cytotoxic towards HSC-2 (IC₅₀ 629.50 µg/mL), while in the HSC-3 cells, the IC₅₀ is lower than HSC-2 cells (IC₅₀ 164.06 µg/mL). The areca nut showed weak cytotoxicity against HSC-2 cells. Sakagami *et al.* found that flavonoid-related phenols especially flavones showed weak cytotoxic activity against HSC-2 ³⁹.

Revision:

Discussion

Paragraph 1

This study is a novel or first study which clearly reveals the potential cytotoxicity effect and mechanism of action of areca nut in oral squamous cell lines. Our preliminary study showed that the areca nut has a high content of total phenolic and flavonoid and showed cytotoxicity activity against HSC-2 and HSC-3 cells ³⁸. In the present study, we found that areca nut extract can induce apoptosis in HSC-2 and HSC-3 cells with optimum time after 48 hours exposure. This result is similar with the previous study that the ethanolic extract of

areca nut (IC_{50} 77 μ g/mL) for 48 hours could inhibit the growth of MCF-7 cells ⁴⁰.

13. Statement before revision

Discussion

Paragraph 2

This study performs apoptosis and caspase-3 activity tests using flow cytometry, with the objective to acknowledge whether the cell death mechanism happens through apoptosis induction by areca nut extract or not. In order to acknowledge the optimum time of areca nut extract activity against the cells, two units of time are used, which are 24 and 48 hours. The results of flow cytometry analysis on HSC-2 cells shows that areca nut extract can induce late apoptosis activity after 24 and 48 hours exposure, but the increase of late apoptotic cells occurs more following 48 hours exposure. This result is in accordance with the past study that performed apoptosis test using orange acridine-ethidium bromide staining (double staining). The result showed that treatment with an ethanolic extract of areca nut (IC_{50} 77 μ g/mL) for 48 hours inhibits the growth of MCF-7 cells as much as 13–84% ⁴⁰.

Revision:

Discussion

Paragraph 2

Although the extract has the same optimum time in both cells, we found that HSC-3 cells have the ability to withstand apoptosis higher than HSC-2 cells. This result is possible because of the characteristic of HSC-3 cells is different from HSC-2 cells. Both cells have mutated *p53* tumor-suppressor gene [2, 3]. The HSC-3 cell line has high metastatic potential with doubling time longer than HSC-2. The HSC-2 cell line has neither invasive nor metastatic potential. However, we do not fully understand the different mechanism that occurred between the two cell types in response to the areca nut. Further studies to investigate this issue will be needed.

14. Statement before revision

Discussion

Paragraph 3

The flow cytometry analysis was performed to reveal the loss of plasma membrane asymmetry in cells. In apoptotic cells, the membrane phospholipid phosphatidylserine (PS) is translocated from the inner to the outer leaflet of the plasma membrane, thereby exposing PS to the external cellular environment. Annexin V is a 35–36 kDa Ca^{2+} -dependent phospholipid-binding protein with high affinity for PS and binds to exposed apoptotic cell surface PS. Annexin V can be conjugated to fluorochromes while retaining its high affinity for PS and thus serves as a sensitive probe for flow cytometric analysis of cells undergoing apoptosis. This is one of the earliest features of apoptosis. In our research, The flow cytometry was performed triple for both cells. The cells are processed with enzymatic degradation, centrifugation, and/or filtration to isolate the cells of interest, and the resulting cellular suspension is “stained” with fluorescent antibodies. When HSC-2 cells were cultured with areca nut for 48 hours, most of the cells were in the upper right quadrant;

AV+/PI+. It means that most of the cells have undergone late apoptosis (Figure 1B). However, when HSC-2 cells were cultured for 48 hours under the same condition without areca nut treatment, we found that only less than 40% of the cells were viable. This condition suggests that the preparation of the staining process in flow cytometry itself may trigger the death of the cells (apoptosis or necrosis). The same result is seen in the HSC-3 cells for 24 hours without treatment. This includes one of the limitations of our research. To ascertain the biological mechanism underlying areca nut-induced death, the apoptotic cell images should be obtained by a fluorescent microscope.

Revision:DiscussionParagraph 3

The flow cytometry analysis was performed to reveal the loss of plasma membrane asymmetry in cells. In apoptotic cells, the membrane phospholipid phosphatidylserine (PS) is translocated from the inner to the outer leaflet of the plasma membrane, thereby exposing PS to the external cellular environment. The cells are processed with enzymatic degradation, centrifugation, and/or filtration to isolate the cells of interest, and the resulting cellular suspension is "stained" with fluorescent antibodies. In our finding, most of the treated HSC-2 cells were undergone late apoptosis (Figure 1A). However, we found that only less than 40% of the control cells were viable. This condition suggests that the preparation of the staining process in flow cytometry itself may trigger the death of the cells (apoptosis or necrosis). The same result is seen in the untreated HSC-3 cells for 24 hours without treatment. This includes one of the limitations of our research. To ascertain the biological mechanism underlying areca nut-induced death, the apoptotic cell images should be obtained by a fluorescent microscope.

15. Statement before revisionDiscussionParagraph 4

Areca nut extract can possibly induce non-apoptotic cell death or necrosis. This is shown from the increase in necrotic cell percentage significantly after 24 hours of exposure. One of the past studies using catechin from green tea, proved that catechin has the ability to induce necrosis or non-apoptotic cell death in leukemia cells without caspase-8, 9, and 3 activities⁴¹ Although molecular mechanism pathway of necrosis is not clearly understood, catechin can possibly induce necrosis through two pathways, which are decreasing concentration of intracellular ATP and interaction on ATP-binding site of glucose-regulated protein (GRP78) leading to increased activity of ATPase⁴¹. This result shows two competitive abilities between catechin and ATP-binding site leading to necrosis with catechin activity via the apoptosome (intrinsic pathway) and death induced signaling pathway (DISC; extrinsic pathway).

Revision:DiscussionParagraph 4

The present study demonstrated that the caspase-3 activity as an effector caspase is shown to be related with late apoptosis activity because of the increase of caspase-3 with

increasing late apoptotic cells percentage in both cells. Analysis of caspase activity confirmed that apoptosis might be the major mechanism of cell death induced by areca nut. As far as we know, there is no similar report regarding the caspase-3 activity by areca nut, but this result is similar to several previous studies that used plants containing flavonoid to increase caspase activity in cancer cells[4, 5]⁴². This finding may have biological implications in cancer treatment. Caspases inside cells are in an inactive form (procaspase), but activation induces the production of other caspases leading to cell death through proteolytic activity^{46, 47}. Caspase-3 activation is a crucial component in the apoptotic signaling cascade. Based on the results obtained from our study, the apoptosis pathway involved in areca nut-induced cell death in both cancer cell lines may be through the extrinsic and intrinsic pathways. Further investigation is needed to clarify the exact mechanism through which areca nut induces apoptosis.

16. Statement before revision

Discussion

Paragraph 5

Analysis of caspase-3 activity in HSC-2 cells shows results in accordance with the apoptosis assay, in that caspase-3 activity increases significantly after areca nut extract for 24 and 48 hours compared to control, with the increase of caspase-3 activity also being higher after 48 hours exposure. This result is similar to the study using catechin of green tea and hydrate catechin against HS-sultan and RPMI8226 cell strains, and MCF-7 cells using Western blot and quantitative RT-PCR techniques, that this compound can induce caspase-3, 8, and 9 activities⁴².

Revision:

Discussion

Paragraph 5

This research showed that the apoptosis activity using flow cytometry has several advantages, including fast period time analysis (thousand of cells per second), single cell analysis, and multiparametric measurements (correlations with several different cell events in one unit of time), but this machine also has drawbacks; the presence of physical and enzymatic manipulations during cell preparation and staining, can trigger additional apoptosis or necrosis cell numbers. Furthermore, flow cytometry is an efficient machine to calculate the number of apoptotic cells based on PS staining out of the cell membrane, so it is more appropriate to detect early apoptosis. If the test aims to improve the accuracy of DNA fragmentation calculations in late apoptosis, it is recommended to use *Terminal deoxynucleotidyl transferase (TdT) dUTP Nick-End Labeling (TUNEL)*.

17. Statement before revision

Discussion

Paragraph 6

The results of flow cytometry analysis on HSC-3 cells show that areca nut extract could also induce apoptosis after extract exposure for 24 and 48 hours. Unlike with HSC-2 cells, extract exposure induced more early apoptosis after 24 hours exposure, but after 48 exposure apoptosis induction by the extract happened more in the end step. Caspase-3 activity as an

effector caspase is shown to be related with late apoptosis activity because of the increase of caspase-3 with increasing late apoptotic cells percentage. There is a significant increase in necrotic cells percentage after 48 hours of exposure. Therefore, the apoptosis assay showed that areca nut extract is capable of inducing apoptosis in HSC-2 and HSC-3 cells with an optimum time after 48 hours exposure. Although the extract has the same optimum time in both cells, there is a difference on extract effect on the number of apoptotic cells, where the percentage of HSC-2 cells undergoing apoptosis is higher than HSC-3 cells. This result is possible because of the characteristic of HSC-3 cells is different from HSC-2 cells. The HSC-3 cells have the p53 gene mutation ³⁶. The mutation of HSC-3 cells was confirmed in a previous report ⁴³. However, when the p53 gene mutates, the mutated p53 protein is excessively produced or accumulated, thereby compromising apoptosis and leading to abnormal or malignant cell growth ⁴⁴. We found that HSC-3 cells have the ability to withstand apoptosis higher than HSC-2 cells. However, this finding may vary by the study design and so much more data must be collected to better understand this phenomena.

Revision:DiscussionParagraph 6***Deleted*****18. Statement before revision**DiscussionParagraph 7

Literature shows that in addition to the p53 gene mutation in HSC-3, severe damage to phosphorylation of Ser ⁴⁶ in HSC-3 cells causes loss of apoptotic ability mediated by p53 and also increased survival ability of HSC-3 cells against anticancer genes compared to HSC-2 cells ⁴⁵. The p53 tumor suppressor gene holds an important role in deciding the cells' fate if there is DNA damage. If there is mild damage, p53 will stop the growth until the DNA repair process is done. If there is severe damage, p53 will induce senescence process to prevent the increase of precancerous cells. Phosphorylation of Ser ⁴⁶ causes p53 to activate proapoptotic genes, leading to the induction of apoptosis ⁴⁵. However, the different response between HSC-2 and HSC-3 cells after exposure to extract could possibly be caused by different effects of areca nut extract on the extrinsic and intrinsic pathways. Due to the effects of the p53 mutation on the intrinsic pathway in HSC-3 cells raises the possibility of the effects of the extracts being solely through the extrinsic pathway, whereas in HSC-2 cells, the extract works on the extrinsic and intrinsic pathways leading to more apoptosis occurring in HSC-2 cells. This cannot be determined from these results as not tests on caspase 8 and 9 were performed.

Revision:DiscussionParagraph 7***Deleted*****19. Statement before revision**

DiscussionParagraph 8

The induction of apoptosis in tumor cells is considered a valuable method to treat cancer. A wide variety of natural substances have been recognized to have the ability to induce apoptosis in various tumor cells. Apoptosis is an active form of cell suicide controlled by a network of genes, in which the Bcl-2 family proteins play an important role in the control of apoptosis. The balance of pro- and anti-apoptotic Bcl-2 family proteins control permeabilization of the outer mitochondrial membrane and release of intermembrane space proteins, most notably cytochrome c. In the presence of cytochrome c and dATP, Apaf-1, the scaffold around which the apoptosome is built, recruits and activates caspase-9, which then propagates a cascade of further caspase activation events downstream.

Revision:DiscussionParagraph 8**Deleted****20. Statement before revision**DiscussionParagraph 9

Caspases inside cells are in an inactive form (procaspase), but activation induces the production of other caspases leading to cell death through proteolytic activity^{46, 47}. Initiator caspase activation (caspase-8 and 9) by catechin shows early apoptotic activity in cell death. Cell death through extrinsic pathway can be influenced by catechin derivatives originating from green tea, resulting in inhibition NF- κ B, MAPKs signals, nitric oxide synthesis, and EGFR mediated by transduction pathway signaling through suppressing on EGF binding with its receptor, AP-1, IGF-1 signaling pathway, COX-2, and proteasome activity⁴⁶. Cell death through the mitochondrial pathway can also be induced by catechin. Changes in mitochondria caused by an increase in membrane permeability lead to opened pores and loss of the mitochondrial transmembrane potential causing the release of cytochrome c into the cytosol, thereby activating the caspase-9 and 3 pathway⁴⁶.

Revision:DiscussionParagraph 9**Deleted****21. Statement before revision**DiscussionParagraph 10

Catechin can increase apoptogenic protein release from mitochondria such as cytochrome c, Smac/DIABLO, and AIF into cytosol leading to death signaling from inside of the mitochondria releasing more and activating caspase-3⁴⁸. The decrease of Bcl2 and Bcl-XL antiapoptotic protein, an increase of Bax proapoptotic protein in the intrinsic pathway are also influenced by catechin. If there is a p53 mutation, the function of BH-3 proapoptotic

protein will be inhibited and function of Bcl-2 antiapoptotic protein family will increase leading to inhibition of anticancer agent activity in the intrinsic pathway. Caspase-3 activation is a crucial component in the apoptotic signaling cascade. Based on the results obtained from our study, the apoptosis pathway involved in areca nut-induced cell death in both cancer cell lines may be through the extrinsic and intrinsic pathways. Further investigation is needed to clarify the exact mechanism through which areca nut induces apoptosis.

Revision:DiscussionParagraph 10***Deleted*****22. Statement before revision**DiscussionParagraph 11

This research also showed that the apoptosis activity using flow cytometry has several advantages, including fast period time analysis (thousand of cells per second), single cell analysis, and multiparametric measurements (correlations with several different cell events in one unit of time), but this machine also has drawbacks; the presence of physical and enzymatic manipulations during cell preparation and staining, can trigger additional apoptosis or necrosis cell numbers. Furthermore, flow cytometry is an efficient machine to calculate the number of apoptotic cells based on PS staining out of the cell membrane, so it is more appropriate to detect early apoptosis. If the test aims to improve the accuracy of DNA fragmentation calculations in late apoptosis, it is recommended to use *Terminal deoxynucleotidyl transferase (TdT) dUTP Nick-End Labeling (TUNEL)*.

Revision:DiscussionParagraph 11**Paragraph 11 was removed to paragraph 5****23. References****Addition of new references**

Lin CC, Yang JS, Cheng JT, et al: **Berberine induces apoptosis in human HSC-3 oral cancer cells via simultaneous activation of the death receptor-mediated and mitochondrial pathway**. *Anticancer Res* 2007, **27**:3371-3378.

Das A, Banik NL, Ray SK: **Flavonoids activated caspases for apoptosis in human glioblastoma T98G and U87MG cells but not in human normal astrocytes**. *Cancer* 2010, **116**(1):164-176.

Competing Interests: No competing interest

Reviewer Report 01 April 2019

<https://doi.org/10.5256/f1000research.18953.r41638>

© 2019 Sufiawati I. This is an open access peer review report distributed under the terms of the [Creative Commons Attribution License](#), which permits unrestricted use, distribution, and reproduction in any medium, provided the original work is properly cited.



Irna Sufiawati 

Department of Oral Medicine, Faculty of Dentistry, Padjadjaran University, Bandung, Indonesia

I have read the new version of the article. I believe that I have an appropriate level of expertise to confirm that it is of an acceptable scientific standard.

Is the work clearly and accurately presented and does it cite the current literature?

Yes

Is the study design appropriate and is the work technically sound?

Yes

Are sufficient details of methods and analysis provided to allow replication by others?

Yes

If applicable, is the statistical analysis and its interpretation appropriate?

Yes

Are all the source data underlying the results available to ensure full reproducibility?

Yes

Are the conclusions drawn adequately supported by the results?

Yes

Competing Interests: No competing interests were disclosed.

I confirm that I have read this submission and believe that I have an appropriate level of expertise to confirm that it is of an acceptable scientific standard.

Author Response 04 Apr 2019

Liza Sari, Syiah Kuala University, Banda Aceh, Indonesia

Dear Dr. Irna,
Thank you so much for your support and valuable responses.

I'm very honored that my article was reviewed by you.

I thank you for it and I pray that God will bless you.

Sincerely
Dr. Liza

Competing Interests: No competing interests

Reviewer Report 21 January 2019

<https://doi.org/10.5256/f1000research.18953.r41639>

© 2019 Ikeda M. This is an open access peer review report distributed under the terms of the [Creative Commons Attribution License](#), which permits unrestricted use, distribution, and reproduction in any medium, provided the original work is properly cited.



Masa-Aki Ikeda

Graduate School of Medical and Dental Sciences, Tokyo Medical and Dental University, Tokyo, Japan

Several improvements have been made in the revised manuscript, but there are still points to be improved.

First, as suggested previously, very low survival rate of untreated cells in Figure 1 and 2 makes the results less convincing. For example, while approximately 80% untreated cells survived after 48 hours, only 25% of untreated cells (control) survived and more than 50% of untreated cells underwent apoptosis (early + late) after 24 hours in Figure 2B. These results are obviously weird and maybe due to inappropriate assay conditions or something else. The detected apoptosis in untreated cells is too large to be considered as “false positives”. In the case of experimental biology, variations among samples can result from biological variations or technical errors related to the method used. In general, the biological variations are larger than the technical variations. Thus, it is necessary to repeat the whole experiment independently several times. The authors stated that triplicate measurements were done in parallel in this study, but it appears that they might consider only technical variations. Carrying out independent repetition to check the reproducibility of the results is the best way to verify their findings and avoid the existence of “false positives” in their data.

Second, if the hypothesis was supported after verifying the findings, the authors might do additional experiments to confirm it. Regarding this point, the authors have carried out experiments by using another reagent, an active caspase-3 antibody, to confirm the Annexin V results. However, their findings obtained in this study merely relies solely on one methodology, flow cytometry. Generally, experimental biology studies confirm findings by using combinations of several different methods and assays. Therefore, it would be better for the authors to verify their findings by using another method different from flow cytometry, for example, showing apoptotic cell images obtained by a fluorescent microscope.

Minor points:

Figures 1 and 2

They look confusing, because each element of the graphs is not arranged as usual. It is better to exclude the bars indicating viable cell populations from the Figures. Showing only dead cell populations (early apoptosis, late apoptosis, and necrosis) appears to be sufficient, because viable cell populations indicate merely the rest of dead cell populations. Furthermore, usually the authors show the results from left to right in order of things occurring. That is, early apoptosis first on left, then late apoptosis, and necrosis on right (not very important). Finally, it would be better to reverse the order of the bars indicating Areca nut and control, i.e. control on left and Areca nut on right.

Figure 3

The authors should make the similar changes as mentioned as to Figures 1 and 2. First, showing only right panels, i.e. caspase-3 (+) of 24 h and 48 h, is sufficient, because left panels, i.e. caspase-3 (-), indicates only the rest of cell populations shown in right panels, i.e. these indicate the same meaning. Second, it would be better to reverse the order of the bars indicating Areca nut and control.

Is the work clearly and accurately presented and does it cite the current literature?

Yes

Is the study design appropriate and is the work technically sound?

Yes

Are sufficient details of methods and analysis provided to allow replication by others?

Yes

If applicable, is the statistical analysis and its interpretation appropriate?

Yes

Are all the source data underlying the results available to ensure full reproducibility?

Yes

Are the conclusions drawn adequately supported by the results?

Yes

Competing Interests: No competing interests were disclosed.

I confirm that I have read this submission and believe that I have an appropriate level of expertise to confirm that it is of an acceptable scientific standard, however I have significant reservations, as outlined above.

Author Response 07 Feb 2019

Liza Sari, Syiah Kuala University, Banda Aceh, Indonesia

1. Thank you very much for the detailed correction. At the time we do the apoptosis

assay, it was true that the amount of the untreated HSC-2 cells that survived 24 hours initially accounted for $\pm 60\%$ and 35% after 48 hours. The same condition was also seen in HSC-3 cells. Our opinion about this condition is that the little amount of viable cells is caused by the staining procedure. We agree with your suggestion that we need to do the different technique to confirm one test to another. We will try to fix our limitations in the next research (we're still waiting for the grant from our university). Actually, we've also tested the cell cycle profile and Ki-67 activity by flow cytometry. The results also showed a significant increase of SubG1 phase on HSC-2 and HSC-3 after areca nut treatment.

2. Revision of the graphs: We have made the revisions of all the graphs as you instructed. We hope you're pleased with the revisions.

Competing Interests: No competing interests

Version 1

Reviewer Report 25 September 2018

<https://doi.org/10.5256/f1000research.16170.r38222>

© 2018 Ikeda M. This is an open access peer review report distributed under the terms of the [Creative Commons Attribution License](#), which permits unrestricted use, distribution, and reproduction in any medium, provided the original work is properly cited.



Masa-Aki Ikeda

Graduate School of Medical and Dental Sciences, Tokyo Medical and Dental University, Tokyo, Japan

In the present article Liza Meutia Sari *et al.* examined the effect of areca nut extract on apoptosis in oral squamous cell carcinoma cell lines, HSC-2 and HSC-3 cells. They show that areca nut extract induced apoptosis in these cells by PI and Annexin-V staining followed by flow cytometry. They confirmed the results by detecting active caspase-3 activity following areca nut extract treatment. They conclude that areca nut extract induces apoptosis and caspase-3 activity in HSC-2 and HSC-3 cell. This is a limited but well-conducted study. However, there are several points that need to be addressed.

Specific points:

- Chemosensitivity of cancer cells is determined by adding different concentrations of a drug. The authors should present the data regarding the effect of different concentrations of areca nut extract on cell viability, when they determined the IC_{50} of HSC-2 and HSC-3 cells.
- According to Abstract and Methods, the authors carried out statistical analysis of their data. They should indicate which data are statistically significantly different in each graph.

- Figure 1B, 2B, 3B, and 4B:
The chart legends should be "Areca nut" but not its concentrations. The concentrations should be written in Figure legends.
- Figure 1B, Top:
24 and 48 should be 24 h and 48 h, respectively.
- Figure 1B (right panel):
It appears that many apoptotic cells (>50%) are detected and only less than 40% of cells are viable in control at 48 h, raising a question about the reliability of the results. The authors should clarify this point.
- Figure 2A and 2B (left panel):
While more than 80% of cells are viable in control at 48 h, many apoptotic cells (>60%) are detected and only 25% of cells are viable in control at 24 h, raising a question about the reliability of the results. The authors should clarify this point.
- Figure 3B and 4B:
By changing M1 and M2 to caspase-3 (-) and caspase-3 (+), respectively, readers will be able to understand the results more easily.
- Discussion page 10, the middle of 1st para:
The authors mentioned "the percentage of HSC-2 cells undergoing apoptosis is high than HSC-3 cells. This result is possibly because there is a difference of cell sensitivity against areca nut extract". However, HSC-2 cells were treated with a higher concentration (629.5 ug/ml) of areca nut extract than HSC-3 cells (164.05 ug/ml). Because the IC50 of HSC-2 cells is higher than that of HSC-3 cells, HSC-3 cells appear to be more sensitive to areca nut extract than HSC-2 cells. This is confusing. The authors should clarify this point.

Is the work clearly and accurately presented and does it cite the current literature?

Partly

Is the study design appropriate and is the work technically sound?

Yes

Are sufficient details of methods and analysis provided to allow replication by others?

Yes

If applicable, is the statistical analysis and its interpretation appropriate?

Partly

Are all the source data underlying the results available to ensure full reproducibility?

Yes

Are the conclusions drawn adequately supported by the results?

Yes

Competing Interests: No competing interests were disclosed.

I confirm that I have read this submission and believe that I have an appropriate level of expertise to confirm that it is of an acceptable scientific standard, however I have significant reservations, as outlined above.

Author Response 18 Oct 2018

Liza Sari, Syiah Kuala University, Banda Aceh, Indonesia

- Chemosensitivity of cancer cells is determined by adding different concentrations of a drug. The authors should present the data regarding the effect of different concentrations of areca nut extract on cell viability, when they determined the IC_{50} of HSC-2 and HSC-3 cells.
- *Comment: Our preliminary study showed that the areca nut has a high content of total phenolic and flavonoid.¹ The areca nut has chemosensitivity of cancer cells in different concentrations. We performed a MTS assay to observe the [G1] areca nut extract on cell viability. Five doses were added into cancer cells, which were 160, 320, 640, 1280, and 2560 $\mu\text{g/mL}$ in HSC-2, HSC-3, and HaCat cells.¹ We found that the areca nut extract was cytotoxic towards HSC-2 (IC_{50} 629.50 $\mu\text{g/mL}$), while in the HSC-3 cells, the IC_{50} is lower than HSC-2 cells (IC_{50} 164.06 $\mu\text{g/mL}$). The areca nut showed weak cytotoxicity against HSC-2 cells. Sakagami et al. found that flavonoid-related phenols especially flavones showed weak cytotoxic activity against HSC-2.*
- According to Abstract and Methods, the authors carried out statistical analysis of their data. They should indicate which data are statistically significantly different in each graph.
- Figure 1B, 2B, 3B, and 4B: The chart legends should be "Areca nut" but not its concentrations. The concentrations should be written in Figure legends.
- Figure 1B, Top: 24 and 48 should be 24 h and 48 h, respectively.
- *Comments: Thank you very much for the corrections, we have corrected all the figures as you instructed.*
- Figure 1B (right panel): It appears that many apoptotic cells (>50%) are detected and only less than 40% of cells are viable in control at 48 h, raising a question about the reliability of the results. The authors should clarify this point.
- *Comments:*
- *The flow cytometry analysis was performed to reveal the loss of plasma membrane asymmetry in cells. In apoptotic cells, the membrane phospholipid phosphatidylserine (PS) is translocated from the inner to the outer leaflet of the plasma membrane, thereby exposing PS to the external cellular environment. Annexin V is a 35–36 kDa Ca^{2+} -dependent phospholipid-binding protein with high affinity for PS and binds to exposed apoptotic cell surface PS. Annexin V can be conjugated to fluorochromes while retaining its high affinity for PS and thus serves as a sensitive probe for flow cytometric analysis of cells undergoing apoptosis [G1]. This is one of the earliest features of apoptosis. **In our research, The flow cytometry was performed triple for both cells. The cells are processed with enzymatic degradation, centrifugation, and/or filtration to isolate***

the cells of interest, and the resulting cellular suspension is “stained” with fluorescent antibodies. When HSC-2 cells were cultured with areca nut for 48 hours, most of the cells were in the upper right quadrant; AV⁺/PI⁺. It means that most of the cells have undergone late apoptosis (Figure 1B). However, when HSC-2 cells were cultured for 48 hours under the same condition without areca nut treatment, we found that only less than 40% of the cells were viable. [G2] This condition suggests that the preparation of the staining process[G3] in flow cytometry itself may trigger the death of the cells (apoptosis or necrosis). This includes one of the limitations of our research.[G4] [G5] [G6] The same result is seen in the HSC-3 cells for 24 hours without treatment.Figure 3B and 4B:By changing M1 and M2 to caspase-3 (-) and caspase-3 (+), respectively, readers will be able to understand the results more easily.

Comments:

- Thank you very much for the correction, we have made the corrections as you instructed
- Discussion page 10, the middle of 1st para:The authors mentioned "the percentage of HSC-2 cells undergoing apoptosis is high than HSC-3 cells. This result is possibly because there is a difference of cell sensitivity against areca nut extract". However, HSC-2 cells were treated with a higher concentration (629.5 ug/ml) of areca nut extract than HSC-3 cells (164.05 ug/ml). Because the IC50 of HSC-2 cells is higher than that of HSC-3 cells, HSC-3 cells appear to be more sensitive to areca nut extract than HSC-2 cells. This is confusing. The authors should clarify this point.

Comments:

- We have read a report from the previous article :
- 1. Kamiya Y, Ohshima T. The individual cell properties of oral squamous carcinoma and tumor suppressor gene mutation. *Oral Sci Intl* 2005;2(2):104-17.2. Sakai E, and Tsuchida N. Most human squamous cell carcinoma in the oral cavity contain mutated p53 tumor suppressor genes. *Oncogen* 1992;7:927-33.
- We think that it could be our limitation in exploring the characteristics of the HSC-3 cells, but maybe this explanation can open our mind about the result:
- This result is possible because of the characteristic of HSC-3 cells is different from HSC-2 cells. The HSC-3 cells have p53 gene mutation.³ The mutation of HSC-3 cells was confirmed in a previous report.⁴ However, when the p53 gene mutates, the mutated p53 protein is excessively produced or accumulated, thereby compromising apoptosis and leading to abnormal or malignant cell growth.⁵ We found that HSC-3 cells have the ability to withstand apoptosis higher than HSC-2 cells. However, this finding may vary by the study design and so much more data must be collected to better understand this phenomena.

Competing Interests: The Authors have no competing interests

Reviewer Report 20 August 2018

<https://doi.org/10.5256/f1000research.16170.r36771>

© 2018 Sufiawati I et al. This is an open access peer review report distributed under the terms of the [Creative Commons Attribution License](#), which permits unrestricted use, distribution, and reproduction in any medium, provided the original work is properly cited.



Irna Sufiawati

Department of Oral Medicine, Faculty of Dentistry, Padjadjaran University, Bandung, Indonesia

Solachuddin Jauhari Arief Ichwan

International Islamic University Malaysia, Selangor, Malaysia

Diah Savitri Ernawati

Airlangga University, East Java, Indonesia

The manuscript is well written and interesting to read. While the findings are not entirely new, they warrant continued attention because of the current interest in the apoptosis effects of areca nut for oral cancer treatment. However, I see the following issues that should be clarified/resolved before indexing this paper:

1. Ethic statements. It is unclear whether the cell line has been authenticated, and the methods make no statement that an ethics committee or institutional review board approved the study, which involves the use of human cell lines. If the authors received ethical approval, please include the name of the ethics committee and the approval number.
2. In the results section, the figures should be made clearer using the appropriate graphing software.
3. The discussion section needs to be elaborated. While the discussion includes references to the previous studies, it has not been discussed whether the findings of the study corroborate or contradict those of similar previous studies. In addition, it would be better if the authors discuss the important signaling elements MAPK's and NFκB signaling pathways related to areca nut extract in cancer cells. The discussion appears to be redundant with the results and conclusion section. The discussion also lacks information regarding the limitations and implications of the study.
4. There is no acknowledgment section in the manuscript. The author should acknowledge anyone who contributed to the study but did not meet the authorship criteria.
5. There are grammatical errors in the manuscript. The language needs to be improved.

References

1. Baig S, Seevasant I, Mohamad J, Mukheem A, et al.: Potential of apoptotic pathway-targeted cancer therapeutic research: Where do we stand?. *Cell Death Dis.* 2016; **7**: e2058 [PubMed Abstract](#) | [Publisher Full Text](#)
2. Chuerduangphui J, Ekalaksananan T, Chaiyarit P, Patarapadungkit N, et al.: Effects of arecoline on proliferation of oral squamous cell carcinoma cells by dysregulating c-Myc and miR-22, directly targeting oncostatin M. *PLoS One.* 2018; **13** (1): e0192009 [PubMed Abstract](#) | [Publisher Full Text](#)

Is the work clearly and accurately presented and does it cite the current literature?

Partly

Is the study design appropriate and is the work technically sound?

Yes

Are sufficient details of methods and analysis provided to allow replication by others?

Yes

If applicable, is the statistical analysis and its interpretation appropriate?

Yes

Are all the source data underlying the results available to ensure full reproducibility?

Yes

Are the conclusions drawn adequately supported by the results?

Yes

Competing Interests: No competing interests were disclosed.

Reviewer Expertise: Oral Medicine, Immunology, Microbiology, Infectious Disease

We confirm that we have read this submission and believe that we have an appropriate level of expertise to confirm that it is of an acceptable scientific standard, however we have significant reservations, as outlined above.

Author Response 29 Aug 2018

Liza Sari, Syiah Kuala University, Banda Aceh, Indonesia

1. Response:

- This research has passed the ethics approval with number 501/H2.F1/Etik/2014. The Ethic committee is The Health Research Ethics Committee of the Faculty of Medicine, University of Indonesia. The chairman is Prof. Dr. dr. Rianto Setiabudy, Sp.FK. (The ethical approval is in the attachment).
- The HSC-3 and HSC-2 cell lines used in this study were provided by the Oral Biological Laboratory, Faculty of Dentistry of the University of Indonesia. We would like to thank Assoc Prof Masa-Aki Ikeda advisor in Japan who has provided them.

2. We have sent all graphs of the flow cytometry, which are the original results of manual gating using CellQuest software (Becton Dickinson, NJ) to the F1000 Research editorial team. All the graphs contained in the article are the same graphs as the results of flow cytometry but have been saved in JPEG.

3. Response:

- The study of apoptotic and caspase-3 activities of areca nut on the oral cancer cells, especially HSC-2 and HSC-3, was the novel or first research conducted as far as we know. The Previous study only has indeed tested ethanolic extract of areca nut cytotoxicity activity against the different type of cancer cells such as MCF-7 cells, and they didn't count the number of cells undergoing apoptosis, so we don't have any information about other studies with the same form of this research. We also have studied the capability of areca nut in cytotoxicity activity on oral cancer cells and has been published in the other previous

journal. We try to be very careful in comparing this study with other previous research especially if they were using different cell types and methods.

- Limitations of the study: The apoptosis activity using flow cytometry have several advantages, including fast period time analysis (thousand of cells per second), single cell analysis, and multiparametric measurements (correlations with several different cell events in one unit of time), but this machine also has drawbacks; the presence of physical and enzymatic manipulations during cell preparation and staining, can trigger additional apoptosis or necrosis cell numbers. Furthermore, flow cytometry is only used to calculate the number of apoptotic cells based on PS staining out of the cell membrane. That's why flow cytometry is more appropriate to detect early apoptosis. If the test aims to improve the accuracy of DNA fragmentation calculations in late apoptosis, it's recommended to use *Terminal deoxynucleotidyl transferase (TdT) dUTP Nick-End Labeling (TUNEL)*.
- The previous study has indeed shown the existence of cell death through extrinsic pathways due to the inhibition of *NF-kB and MAPKs* by catechin derived from green tea. The discussion in this article is focused on caspase-3 activity as a determinant of the cell death. This study is part of a series of areca nut research that is still going on. The discussion of these proteins will be discussed in our next research.

4. Acknowledgment: This study was a research without grants.

5. This article was translated by Transmedical Institute. Proofreading process was done by Transmedical Institute. The writing technique has been corrected by Grammarly and during the revision process, the editorial team of F1000 research has also improved the sentence structure in the article.

Competing Interests: There's no competing interests

The benefits of publishing with F1000Research:

- Your article is published within days, with no editorial bias
- You can publish traditional articles, null/negative results, case reports, data notes and more
- The peer review process is transparent and collaborative
- Your article is indexed in PubMed after passing peer review
- Dedicated customer support at every stage

For pre-submission enquiries, contact research@f1000.com

F1000Research