



RESEARCH ARTICLE

REVISED Knowledge management awareness assessment in Nigerian tertiary institutions [version 2; peer review: 2 approved]

Afolakemi Simbo Ogunbanwo ¹, Julius Olatunji Okesola ², Sheryl Buckley¹

¹School of computing, University of South Africa, Pretoria, South Africa

²Computational Sciences department, First Technical University, Ibadan, Nigeria

v2 First published: 01 May 2019, 8:608
<https://doi.org/10.12688/f1000research.18223.1>

Latest published: 16 Oct 2019, 8:608
<https://doi.org/10.12688/f1000research.18223.2>

Abstract

Background: Knowledge management (KM) is a recipe for increasing performance and promoting innovation in tertiary institutions. However, some scholars argue that the Nigerian educational sector is yet to fully appreciate the importance of KM as their KM awareness level is still low. Since measurement is the basic foundation to accomplish success, this paper assesses the KM awareness level in tertiary institutions of south-west Nigeria.

Methods: The study applied a survey method using a closed ended questionnaire administered to 50 participants from each of the 10 institutions measured by Likert scaling. Employing SPSS for data analysis, frequency count and percentage score were adopted to analyse the demographic data, and the research hypotheses were analysed with chi square test, Pearson chi square and bivariate correlation (Pearson) analysis.

Results: A positive relationship between awareness, current status and level of familiarity was noted. KM awareness level in the institutions is high even though there is a significant difference between the public and private universities, as well as between the students and academic staff.

Conclusions: Since an increase in the awareness level increases both current status and level of familiarity which often account for KM success, it is recommended that KM awareness level should continuously be improved upon in Nigerian tertiary institutions.

Keywords

Awareness level, Knowledge, knowledge management, tertiary institutions, performance

Open Peer Review

Reviewer Status

	Invited Reviewers	
	1	2
version 2 (revision) 16 Oct 2019		 report
version 1 01 May 2019	 report	 report

1. **Aderonke Oni**, Covenant University, Ota, Nigeria

2. **Magiswary Dorasamy** , Multimedia University, Cyberjaya, Malaysia

Any reports and responses or comments on the article can be found at the end of the article.

Corresponding authors: Afolakemi Simbo Ogunbanwo (58556214@mylife.unisa.ac.za), Julius Olatunji Okesola (olatunjiokesola@tech-u.edu.ng), Sheryl Buckley (sherbuck@gmail.com)

Author roles: **Ogunbanwo AS:** Conceptualization, Investigation, Methodology, Writing – Original Draft Preparation, Writing – Review & Editing; **Okesola JO:** Data Curation, Formal Analysis; **Buckley S:** Supervision

Competing interests: No competing interests were disclosed.

Grant information: This study was sponsored by the University of South Africa, South Africa

The funders had no role in study design, data collection and analysis, decision to publish, or preparation of the manuscript.

Copyright: © 2019 Ogunbanwo AS *et al.* This is an open access article distributed under the terms of the [Creative Commons Attribution License](#), which permits unrestricted use, distribution, and reproduction in any medium, provided the original work is properly cited.

How to cite this article: Ogunbanwo AS, Okesola JO and Buckley S. **Knowledge management awareness assessment in Nigerian tertiary institutions [version 2; peer review: 2 approved]** F1000Research 2019, 8:608 <https://doi.org/10.12688/f1000research.18223.2>

First published: 01 May 2019, 8:608 <https://doi.org/10.12688/f1000research.18223.1>

REVISED Amendments from Version 1

The comments pointed out by the first reviewer (Aderonke Oni) was addressed in this new version. Also based on the second reviewer's comments, new section tagged theory and hypotheses was introduced. This introduced section discussed Frid KM Model and applied it as a grading for KM activities in south west institutions in Nigeria. The corrections made is as shown in table below.

Reviewer	Section	Correction	Page
Aderonke Oni	Abstract	Replacement of personal pronoun	2
	Method	Insertion of STROBE full meaning	4
	Conclusion	Replacement of personal pronoun	8
Magiswary Dorasamy	Theory and Hypotheses	Application of KM model (Figure 1 and Table 1)	2–3
	References	Additional references	10–11

Any further responses from the reviewers can be found at the end of the article

Introduction

KM is a process of coordinating, organising and making institutional or organisational knowledge available for knowledge creation, sharing, storage and reuse to achieve institutional aims and objectives. Managing the existing knowledge flow in tertiary institutions is essential. According to Kayıkcı and Ozan¹, knowledge is a powerful tool for organisational competition and therefore becomes significant to every industry including banking, education and governmental sectors^{2–5}. Knowledge generated should be properly managed to ensure its future availability. Therefore, tertiary institutions have moved beyond being merely a knowledge provider to students, to also curating current knowledge for future use⁶. A number of these institutions now operate like business organisations and compete among themselves, with knowledge as their commodity. Tertiary institutions are centres for knowledge creation and sharing⁷, and are regarded as knowledge business organizations that should devise means of gathering and disseminating knowledge for effective decision making^{8,9}. Therefore, institutions desiring higher performance must identify, capture and circulate valuable institutional knowledge for re-use^{9,10}.

Many studies including Demchig⁷ and Kidwell *et al.*¹¹ have worked on the application of KM in tertiary institutions, claiming that it improves institutional capabilities in decision making and reduces the product development cycle time, as well as improving academic and administrative services. They argue that KM adoption and implementation by the institutions could result to exponential improvements in knowledge sharing, as it has a positive impact on academic research, curriculum development, student and alumni services, administrative services and strategic planning. Al-sulami, Rashid and Ali¹², claimed that the performance level of an institution can shoot up through the effective and efficient implementation of knowledge

management. Similarly, it increases innovation giving institutions a competitive advantage over others¹³.

KM is an emerging concept in developing countries with varying awareness and maturity levels¹⁴. Charles & Nawe¹⁵ discovered that staff of Mbeya University of Science and Technology (MUST) in Tanzania were not fully aware of KM practices. Demchig⁷ conducted an assessment on level of KM maturity in Mongolian higher institutions using the Knowledge Management Capability Assessment (KMCA) model; it was revealed that maturity level of KM was in level one, indicating knowledge sharing was not discouraged in Mongolian higher institutions⁷. Yaakub, Othman & Yousif¹⁶ discovered that KM practices in Malaysian higher learning institutions is still very low, while Anvari *et al.*¹⁷ found the level of KM in Firoozabad Islamic Azad University to be below average. Although KM awareness and maturity level is yet to be fully investigated amongst Nigerian tertiary institutions in the southwest geo-political zone, several Nigerian authors^{18–20} have found that KM is has yet to be fully implemented in Nigerian tertiary institutions.

While the literature indicates KM awareness in most developing country institutions is low^{7,15–17}, a number of studies do not agree^{21,22}. Since the position is difficult to generalise due to socio-cultural differences, KM awareness in Nigerian institutions needs to be further investigated.

Theory and Hypotheses

Assessment is regarded as “the first step towards improvement; one can’t improve what one can’t measure – formally or informally” (Kulkarni & Louis, 2003:2542). While Demchig⁷ argued that KM current status in institution should be evaluated from the starting point. Therefore in assessing the KM status in Nigerian institutions, the study adopted Frid KM Model framework because it is simple to implement. As shown in Figure 1 below, Frid KM Model is categorized into five segments ranging from level 1 to level 5²³ which are knowledge chaotic, knowledge aware, knowledge focused, knowledge managed, and knowledge centric respectively.

The Table 1 is formulated based on Frid’s KM Model as KM grading scale for measuring the state of KM in the observed institutions.

Demchig⁷ argued that organizations with the higher level perform better in KM activities when compare with others. Hence, we formulated the following four hypotheses to test awareness levels, as well as ascertaining the difference between KM awareness levels of the public and private institutions, as well as that of the academic staff and students.

Hypothesis₁: KM awareness level in universities in the southwest of Nigeria is high.

Hypothesis₂: There is significant difference in the KM awareness level of the academic staff and student.

Hypothesis₃: There is significant difference in the KM awareness level between public and private institutions in southwest Nigeria.

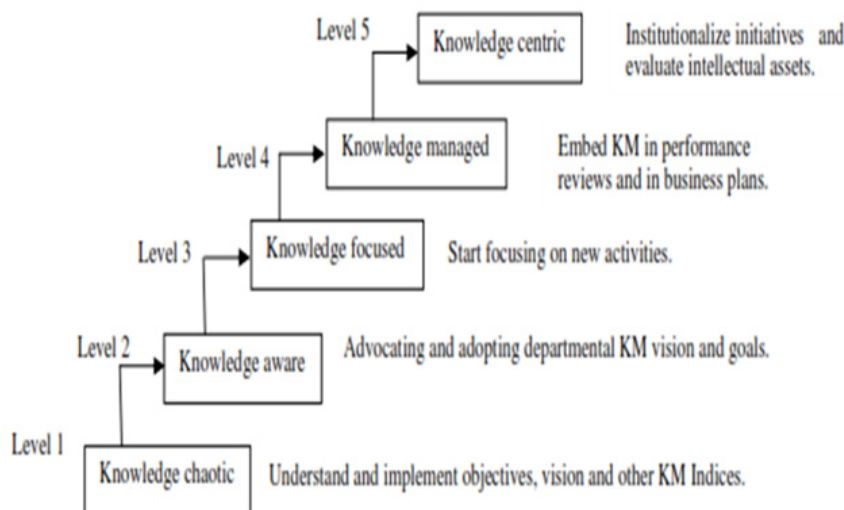


Figure 1. Frid's KM Model: (adapted from Mohajah²³).

Table 1. KM Grading Level and Expectation.

KM Category	KM State	Expectation
Level 1	Knowledge Chaotic	Institution in this level recognizes knowledge as an asset and has clear vision, goals and indices of KM. this stage is regarded as the starting point
Level 2	Knowledge Aware	At this level the institutions focus on adopting, developing and implementing the vision and goals of KM.
Level 3	Knowledge Focused	Institutions in this level are expected to have full implementation of level 1 and 2. Also, attention is given to KM enablers at this stage.
Level 4	Knowledge Managed	The institution embraces all the activities in level 1 to 3 and introduced KM performance review
Level 5	Knowledge Centric	The institution is expected to place emphases on establishing successful initiatives and value intellectual asset.

Hypothesis₄: There is a relationship between awareness, current status and KM familiarity in the tertiary institution in the southwest of Nigeria.

Methods

This section discusses appropriate sampling methods employed as well as the instrumentations adopted, and reported following the Strengthening the Reporting of Observational Studies in Epidemiology (STROBE) reporting guidelines²⁴.

Sampling method

This study adopted both probability and non-probability sampling to examine the awareness level of KM in Nigerian tertiary institution. The research population frame is the 46 accredited universities in south west Nigeria while the total population is 550 comprising both academic staff and students of selected tertiary institutions in South West Nigeria. Stratified random sampling was adopted to select 11 universities out of 46 accredited universities only. The stratified random sampling used is as follows:

- Firstly the population was grouped into three strata - federal, state and private containing 7, 11, and 28 universities respectively.

- Secondly, systematic random sampling was used to select item from each stratum.
- Lastly, the size of each stratum was kept proportional to the sizes of the strata thereby resulting in picking two federal, three state and six private universities.

Purposive sampling was used to select the names of the 11 universities involved in the research from each of the stratum, as well as the participants consisting of academic staff and students from the selected universities. The student population outnumbers staff in every university therefore, the authors decided to gather a sample of students to staff at a ratio of 3:2. To avoid data overload and have a manageable sample size, a total number of 50 respondents (30 students and 20 members of academic staff) were selected from each university to arrive at 550 (50x11) sample size.

The questionnaire (see Extended data²⁵) was personally administered to the 10 universities involved as one university backed out from the research. The 10 universities involved in the research were five public (two federal, three state) and five private. A total number of 50 respondents were selected from each university and 500 questionnaires were administered out of

which only 456 were returned and used for the analysis. The Ethical Committee of the University of South Africa issued an authorization memo to approve the questionnaire.

Instrumentation

Likert scaling was adopted to measure awareness levels in each institution. Questions on level of KM awareness were assigned a score 1 to 4 for 'none', 'low', 'high' and 'very high' respectively while questions on knowledge recognition were respectively tagged with score 1 to 4 for 'strongly disagree', 'disagree', 'agree' and 'strongly agree'. Similarly, questions on current status were assigned score tags of 1 to 4 for 'not in existence', 'on pipeline', 'developing' and 'matured' respectively, while the level of familiarity were assigned a score ranging from 1 to 4 for 'unaware', 'introductory', 'intermediate' and 'advance' respectively.

To test the reliability of the research instrument, Cronbach's alpha reliability test was conducted generating a result of 0.845, thereby confirming the consistency, reliability and acceptability of the factors used. Similarly, the questionnaire was pre-tested using two institutions different from those involved in the study. Administering 60 questionnaires on 30 participants from each institutions, responses and comments obtained helped to identify and address potential hitches prior to performing the actual research.

Ethical consideration

In line with UNISA research ethics policy, all participants had the study explained to them before their recruitment. All participants provided written informed consent to participate.

Data analysis

IBM Statistical Programme for Social Sciences version 21 was adopted for this data analysis. Descriptive statistics of frequency counts and percentage scores was employed to analyse the demographic data, while the participants' responses were analysed using percentage count. Hypothesis 1 was analysed with one sample chi square test, hypotheses 2 and 3 were by Pearson chi square, and hypothesis 4 was by Spearman's rho – a non-parametric correlations.

For both the chi square and Pearson correlation coefficient, a p value <0.05 (5% significant) as ruled below.

- Rule 1 If the p value is greater than 0.05 ($p < 0.05$) accept the null hypothesis
- Rule 2 If the p value is less than 0.05 ($p > 0.05$) accept the alternate hypothesis
- Rule 3 $0.00 < R < 0.33$ indicates weak relationship
- Rule 4 $0.34 < R < 0.66$ indicates moderate relationship
- Rule 5 $0.67 < R < 1.0$ indicates strong relationship

Result

Demographic characteristics of the respondents

Table 2 shows the demographic characteristics of the respondents. The total number of returned questionnaires was 456, 82% of the 500 questionnaires administered. Of these, 55% were male while 45% were female. Regarding the academic

qualification of the respondent, the majority respondents were undergraduates (63%), follow by those with a master's degree (19%), PhDs (9%) and Bachelor's degree (9%). In terms of respondents' status, the majority were students (67%), with academic staff making up 33% of the sample. Public universities constituted 55% while private universities made up 45% (Table 2 and Underlying data²⁶).

Test of research hypotheses

To test the KM awareness level in the sampled institutions, a one-sample chi square test was applied to hypothesis 1. KM awareness levels were defined as 'none', 'low', 'high' and 'very high' (Table 3). The expected N for all the variables was 114. The results show that the hypothesis was accepted with test statistics value 295.930^a, expected count of 114 and p value of 0.001.

To test for possible differences in KM awareness level between academic staff and students, a one-sample chi square test was also used to test the hypothesis 2. The hypothesis was accepted as the test statistics value obtained was 24.794, the expected count was 0.64 and p value of 0.001.

In terms of differences in KM awareness levels between public and private institutions, the outcome of the one sample chi square test on hypothesis 3 confirms the acceptance of the alternate hypothesis with chi square test value of 10.301, expected count 0.90 and p value 0.016.

Pearson correlation was applied on hypothesis 4 to determine the correlation between the KM awareness level, KM current status and KM familiarity. The hypothesis was accepted as the p value was 0.001. The result as depicted on Table 4 shows that there is a moderate relationship between the variables (KM

Table 2. Demographic characteristics of the respondents.

		Frequency	Percentage
Gender	Male	250	55
	Female	206	45
Qualification	Undergraduate	288	63
	Bachelor's Degree	40	9
	Master's Degree	87	19
	PhD	41	9
Status	Student	304	67
	Staff	152	33
Institution	Public	250	55
	Private	206	45

Table 3. Awareness levels.

	Observed N	Expected N	Residual
None	2	114.0	-112.0
Low	116	114.0	2.0
High	256	114.0	142.0
Very high	82	114.0	-32.0
Total	456		

Table 4. Correlations^b Matrix.

		KM Awareness Level	KM Current Status	KM Familiarity
KM Awareness Level	Pearson Correlation	1	0.450**	0.359**
	Sig. (2-tailed)		0.000	0.000
KM Current Status	Pearson Correlation	0.450**	1	0.414**
	Sig. (2-tailed)	0.000		0.000
KM Familiarity	Pearson Correlation	0.359**	0.414**	1
	Sig. (2-tailed)	0.000	0.000	

KM – knowledge management

**. Correlation is significant at the 0.01 level (2-tailed).

b. Listwise N=456

awareness level, KM current status and KM familiarity) with a correlation coefficient range (r) of $0.35 < |r| < 0.45$.

Discussion and conclusion

Although KM implementation is important to tertiary institutions^{7,11–13}, assessment must come before implementation^{19,27}. This study was therefore conducted in the context of the current literature, the majority of which suggests that KM is still emerging in developing countries^{7,16–19,28}, and yet to be fully implemented in Nigeria^{18–20}.

The study investigated knowledge management awareness in Nigerian South-west tertiary institutions and addressed the relationship between awareness, familiarity and current status of KM level. It was discovered that there is significant difference in KM awareness level amongst the public and private universities. Awareness levels between academic staff and students is also significantly different, conforming with the findings of Krubu and Krub²⁹ and Akuegwu and Nwiue³⁰ where heads of department were more involved in KM practice. This study also empirically provides evidence for correlation between the awareness, familiarity and current status of KM level. Also. It was found that there is a positive relationship between awareness, current status and level of familiarity. This suggests that if awareness levels increases, more people/institutions will practice KM and its current status will improve thereby shifting the state from developing to maturing. Similarly, KM awareness levels in south west tertiary institution was found to be high, confirming the previous studies of Ohioyenoye and Eboreime³¹ and Oke, Ogunsemi and Adeeko³². However, since KM awareness level in both the public and private institutions in the South West region in Nigeria is also high and in level 2 as specified by Frid's KM model, this study concludes that Nigerian institutions recognise the

importance of KM towards achieving institutional innovations and higher performance.

Further research may be needed to investigate the level of KM maturity and the relationship between KM and academic performance in Nigerian institutions.

Data availability

Underlying data

Figshare: Knowledge Management Awareness. <https://doi.org/10.6084/m9.figshare.7730480.v1>²⁶

This project contains the following underlying data:

- knowledge_management_F1000.sav (Study participants knowledge management awareness data)

Extended data

Figshare: Knowledge management awareness questionnaire. <https://doi.org/10.6084/m9.figshare.7764644.v1>²⁵

This project contains the following extended data:

- F1000_Questionnaire_KM_awareness.docx (Study questionnaire)

Data are available under the terms of the [Creative Commons Attribution 4.0 International license](#) (CC-BY 4.0).

Acknowledgment

The researchers would like to express their gratitude to the management of University of South Africa for making all the resources needed for the research available.

References

- Kayikçi K, Ozan Y: **Effects of Knowledge Management Competencies of School Principals' to Quality Studies in School.** *Int J Bus Soc Sci.* 2014; 5(5): 188–198.
[Reference Source](#)
- Lee CS, Wong KY: **Development and validation of knowledge management performance measurement constructs for small and medium enterprises.** *J Knowl Manag.* 2015; 19(4): 711–734.
[Publisher Full Text](#)
- Haque MM, Ahlan AR, Jalaldeen M, et al.: **Factors Affecting Knowledge Sharing on Innovation in the Higher Education Institutions (HEIs).** *ARPJ J Eng Appl Sci.*

2015; **10**(23): 18200–18210.

[Reference Source](#)

4. Sharma M, Kaur M: **Knowledge Management in Higher Education Institutions. IRA - Int J Manag Soc Sci.** 2016; **4**(3): 548–555.
[Publisher Full Text](#)
5. Okesola OJ, John SN, Okokpujie KO, *et al.*: **An improved Bank Credit Scoring Model: A Naïve Bayesian Approach.** *2017 International Conference on Computational Science and Computational Intelligence (CSCI).* 2017; 228–233.
[Publisher Full Text](#)
6. Laal M: **Knowledge Management in Higher Education.** *Procedia Comput Sci.* 2011; **3**: 544–549.
[Publisher Full Text](#)
7. Demchig B: **Knowledge management capability level assessment of the higher education institutions: Case study from Mongolia.** *Procedia Soc Behav Sci.* 2015; **174**: 3633–3640.
[Publisher Full Text](#)
8. Toro U, Joshi MJ: **A Review of Literature on Knowledge Management using ICT in Higher Education.** *Int J Comput Technol Appl.* 2013; **4**(1): 62–67.
[Reference Source](#)
9. Gyaase PO, Anane ET, Armah INA: **The Use of Information and Communication Technology (ICT) for Knowledge Management in the Second Cycle Educational Institutions in Ghana.** *Int J Comput Appl.* 2015; **128**(7): 7–13.
[Publisher Full Text](#)
10. Folurunso O, Ogunseye OS, Okesola JO, *et al.*: **Visualizing E-Voting Results.** *J Theor Appl Inf Technol.* 2010; **10**(1): 57–69.
[Reference Source](#)
11. Kidwell JJ, Vander Linde KM, Johnson SL: **Applying Corporate Knowledge Management Practices in Higher Education.** *Educause Quarterly.* 2000; 28–33.
[Reference Source](#)
12. Al-sulami ZA, Rashid AM, Ali N: **The Role of Information Technology to Support Knowledge Management Processes in Higher Education of Malaysian Private Universities.** *Int J Sci Res Publ.* 2014; **4**(10): 1–12.
[Reference Source](#)
13. North K, Kumia G: **Knowledge Management.** Switzerland: Springer International Publishing, 2014.
[Publisher Full Text](#)
14. Okokpujie KO, Noma-Osaghae E, Okesola OJ, *et al.*: **Design and Implementation of a Student Attendance System Using Iris Biometric Recognition.** *Proc -2017 Int Conf Comput Sci Comput Intell CSCI 2017.* 2018; 563–567.
[Publisher Full Text](#)
15. Charles W, Nawe J: **Knowledge Management (KM) Practices in Institutions of Higher Learning in Tanzania with Reference to Mbeya University of Science and Technology.** *Univ Dar es Salaam Libr Journal.* 2017; **12**(1): 48–65.
[Reference Source](#)
16. Yaakub MB, Othman K, Yousif AF: **Knowledge Management Practices in Malaysian Higher Learning Institutions: A Review on Selected Cases.** *Int J Educ Res.* 2014; **2**(1): 1–10.
[Reference Source](#)
17. Anvari A, Alipourian GA, Moghimi R, *et al.*: **An assessment of Knowledge Management (KM): A consideration of information, culture, skills and technology.** *Afr J Bus Manage.* 2011; **5**(28): 11283–11294.
[Reference Source](#)
18. Ojo A: **Knowledge Management in Nigerian Universities: A Conceptual Model.** *Interdiscip J Information Knowledge Manag.* 2016; **11**: 331–345.
[Publisher Full Text](#)
19. Agarwal NK, Marouf LN: **Initiating Knowledge Management in Colleges and Universities: A template.** *Int J Knowl Content Dev Technol.* 2014; **4**(2): 67–95.
[Publisher Full Text](#)
20. Okesola OJ, Okokpujie K, Goddy-worlu R, *et al.*: **Qualitative Comparisons of Elicitation Techniques in Requirement Engineering.** *ARPJ Eng Appl Sci.* 2019; **14**(2): 565–570.
[Reference Source](#)
21. Abu Naser SS, Al Shobaki MJ, Abu Amuna YM: **Promoting Knowledge Management Components in the Palestinian Higher Education Institutions - A Comparative Study.** *Int Lett Soc Humanist Sci.* 2016; **73**: 42–53.
[Publisher Full Text](#)
22. Abu Naser SS, Al Shobaki MJ, Abu Amuna YM: **Measuring knowledge management maturity at HEI to enhance performance-an empirical study at Al-Azhar University in Palestine.** *Int J Commer Manag Res.* 2016; **2**(5): 55–62.
[Publisher Full Text](#)
23. Mohajan HK: **The Impact of Knowledge Management Models for the Development of Organizations.** *J Environ Treat Tech.* 2017; **5**(1): 12–33.
[Reference Source](#)
24. von Elm VJE, Altman DG, Egger M, *et al.*: **Strengthening the Reporting of Observational Studies in Epidemiology (STROBE) statement: guidelines for reporting observational studies.**
25. Ogunbanwo A, Buckley S, Okesola J: **Knowledge management awareness questionnaire.** *figshare.* Paper. 2019.
<http://www.doi.org/10.6084/m9.figshare.7764644.v1>
26. Ogunbanwo A, Buckley S, Okesola J: **Knowledge Management Awareness.** *figshare.* Dataset. 2019.
<http://www.doi.org/10.6084/m9.figshare.7730480.v1>
27. Kulkarni U, Louis RS: **Organizational Self Assessment of Knowledge Management Maturity.** In *Ninth Americas Conference on Information Systems.* 2003; 2542–2551.
[Reference Source](#)
28. Charles W, Nawe J: **No Title.** 48–65.
29. Krubu DE, Krub SG: **Towards Sustainable Development: An Assessment of Knowledge Management Initiatives in Nigerian Universities.** *J Sustain Dev Africa.* 2011; **13**(3): 165–177.
[Reference Source](#)
30. Akuegwu BA, Nwi-ue FD: **Application of Knowledge Management Skills in University Administration in Nigeria: Evidence from Heads of Departments.** *Br J Educ Soc Behav Sci.* 2013; **3**(4): 574–588.
[Reference Source](#)
31. Ohioyenoye JO, Eboreime OF: **Knowledge Management Practices and Performance in Nigerian Universities.** *Eur Sci J.* 2014; **10**(16): 400–416.
[Reference Source](#)
32. Oke AE, Ogunsemi DR, Adeeko OC: **Assessment of Knowledge Management Practices among Construction Professionals in Nigeria.** *Int J Constr Eng Manag.* 2013; **2**(3): 85–92.
[Reference Source](#)

Open Peer Review

Current Peer Review Status:  

Version 2

Reviewer Report 23 October 2019

<https://doi.org/10.5256/f1000research.23109.r55240>

© 2019 Dorasamy M. This is an open access peer review report distributed under the terms of the [Creative Commons Attribution License](#), which permits unrestricted use, distribution, and reproduction in any medium, provided the original work is properly cited.



Magiswary Dorasamy 

Faculty of Management, Multimedia University, Cyberjaya, Malaysia

Author has addressed all corrections. The paper is now improved.

Competing Interests: No competing interests were disclosed.

Reviewer Expertise: Knowledge Management Systems, Cyber Security, Action Research

I confirm that I have read this submission and believe that I have an appropriate level of expertise to confirm that it is of an acceptable scientific standard.

Version 1

Reviewer Report 24 September 2019

<https://doi.org/10.5256/f1000research.19935.r53536>

© 2019 Dorasamy M. This is an open access peer review report distributed under the terms of the [Creative Commons Attribution License](#), which permits unrestricted use, distribution, and reproduction in any medium, provided the original work is properly cited.



Magiswary Dorasamy 

Faculty of Management, Multimedia University, Cyberjaya, Malaysia

The paper investigated KM awareness among tertiary level institutions. Respondents were academics. Data were collected appropriately. However, the paper seems to be missing theoretical framework. A strong theory will be good to lead the direction of the hypotheses. Any of the KM models would be applied for this studies to enhance its contribution in the context of Nigerian

tertiary education. Some unique constructs may play important role in the awareness level of KM in Nigeria. A detail lit review may help to determine this.

Is the work clearly and accurately presented and does it cite the current literature?

Yes

Is the study design appropriate and is the work technically sound?

Partly

Are sufficient details of methods and analysis provided to allow replication by others?

Yes

If applicable, is the statistical analysis and its interpretation appropriate?

Partly

Are all the source data underlying the results available to ensure full reproducibility?

Yes

Are the conclusions drawn adequately supported by the results?

Yes

Competing Interests: No competing interests were disclosed.

Reviewer Expertise: Knowledge Management Systems, Cyber Security, Action Research

I confirm that I have read this submission and believe that I have an appropriate level of expertise to confirm that it is of an acceptable scientific standard, however I have significant reservations, as outlined above.

Reviewer Report 30 May 2019

<https://doi.org/10.5256/f1000research.19935.r47958>

© 2019 Oni A. This is an open access peer review report distributed under the terms of the [Creative Commons Attribution License](#), which permits unrestricted use, distribution, and reproduction in any medium, provided the original work is properly cited.



Aderonke Oni

Department of Computer and Information Sciences, Covenant University, Ota, Nigeria

The object of the study is clear and the research method was clearly outlined as well. However, the following should be attended to:

- The authors should work of the grammatical structure. Personal pronoun e.g. "we" should be avoided.
- The authors should add more significant recommendations.
- Full meaning of "STROBE" should be written before abbreviation.

Is the work clearly and accurately presented and does it cite the current literature?

Partly

Is the study design appropriate and is the work technically sound?

Yes

Are sufficient details of methods and analysis provided to allow replication by others?

Yes

If applicable, is the statistical analysis and its interpretation appropriate?

Yes

Are all the source data underlying the results available to ensure full reproducibility?

Yes

Are the conclusions drawn adequately supported by the results?

Yes

Competing Interests: No competing interests were disclosed.

Reviewer Expertise: information system and data mining

I confirm that I have read this submission and believe that I have an appropriate level of expertise to confirm that it is of an acceptable scientific standard.

The benefits of publishing with F1000Research:

- Your article is published within days, with no editorial bias
- You can publish traditional articles, null/negative results, case reports, data notes and more
- The peer review process is transparent and collaborative
- Your article is indexed in PubMed after passing peer review
- Dedicated customer support at every stage

For pre-submission enquiries, contact research@f1000.com

F1000Research