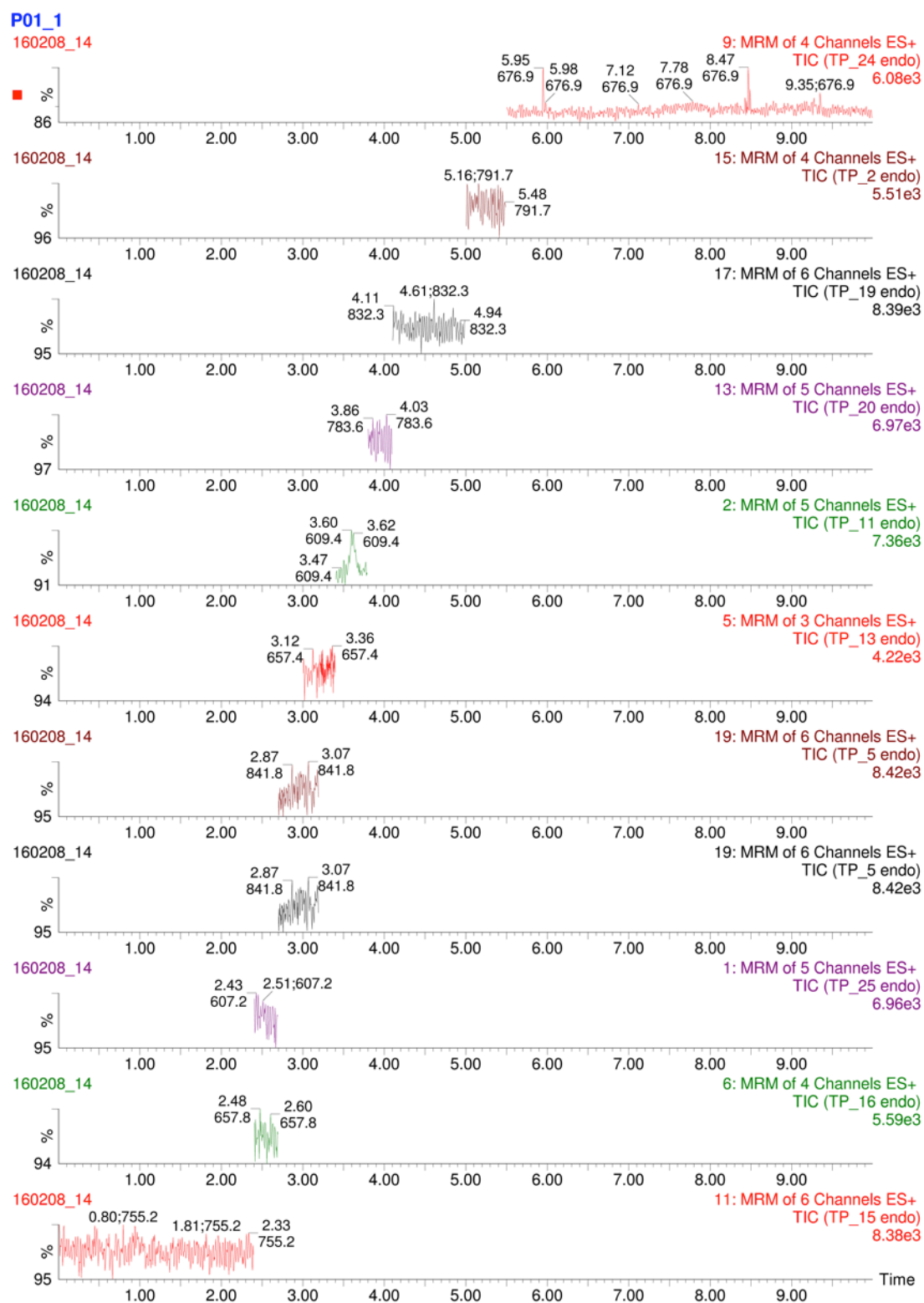
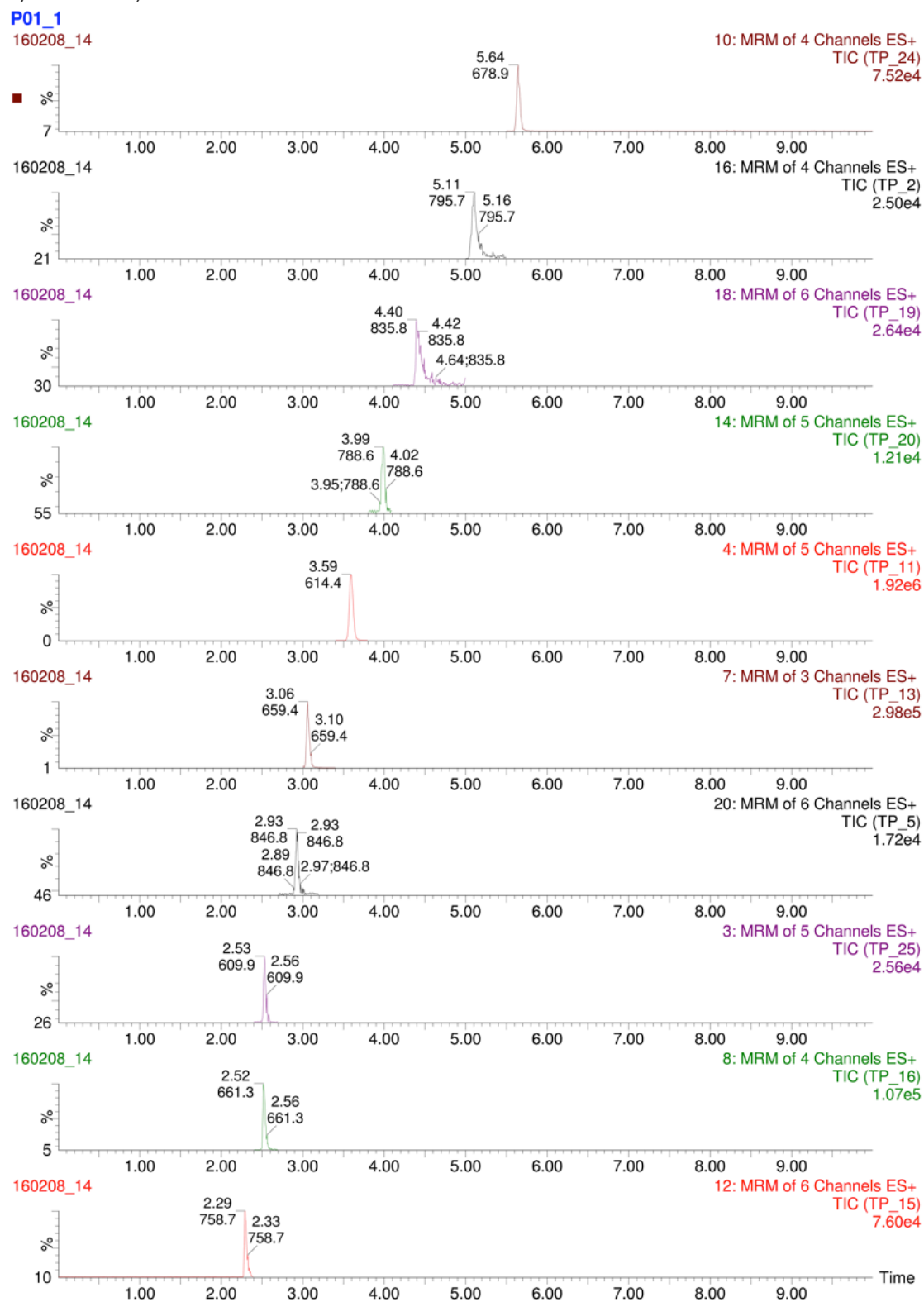


**Supplementary File 2.** Examples of intensity plots displaying selected multiple reaction monitoring experiments for a plasma sample from a secondary stage syphilis-infected individual: 1a (synthetic hPTPs, even numbers) and 1b (endogenous (*T. pallidum*) PTPs, odd numbers). For each peptide the number of selected transitions (channels) is reported. The x-axis shows the chromatographic retention time of the corresponding peptide while the y-axis shows the relative intensity of the MS2 signal. Note: Signal fluctuations present in the 'endogenous' PTP chromatogram are always the result of just one transition, often coupled with a shift in retention time and differing m/z-values differ from the hPTP run, thus these are considered to be noise.

a) Gradient 1- endogenous (*T. pallidum*) PTP view



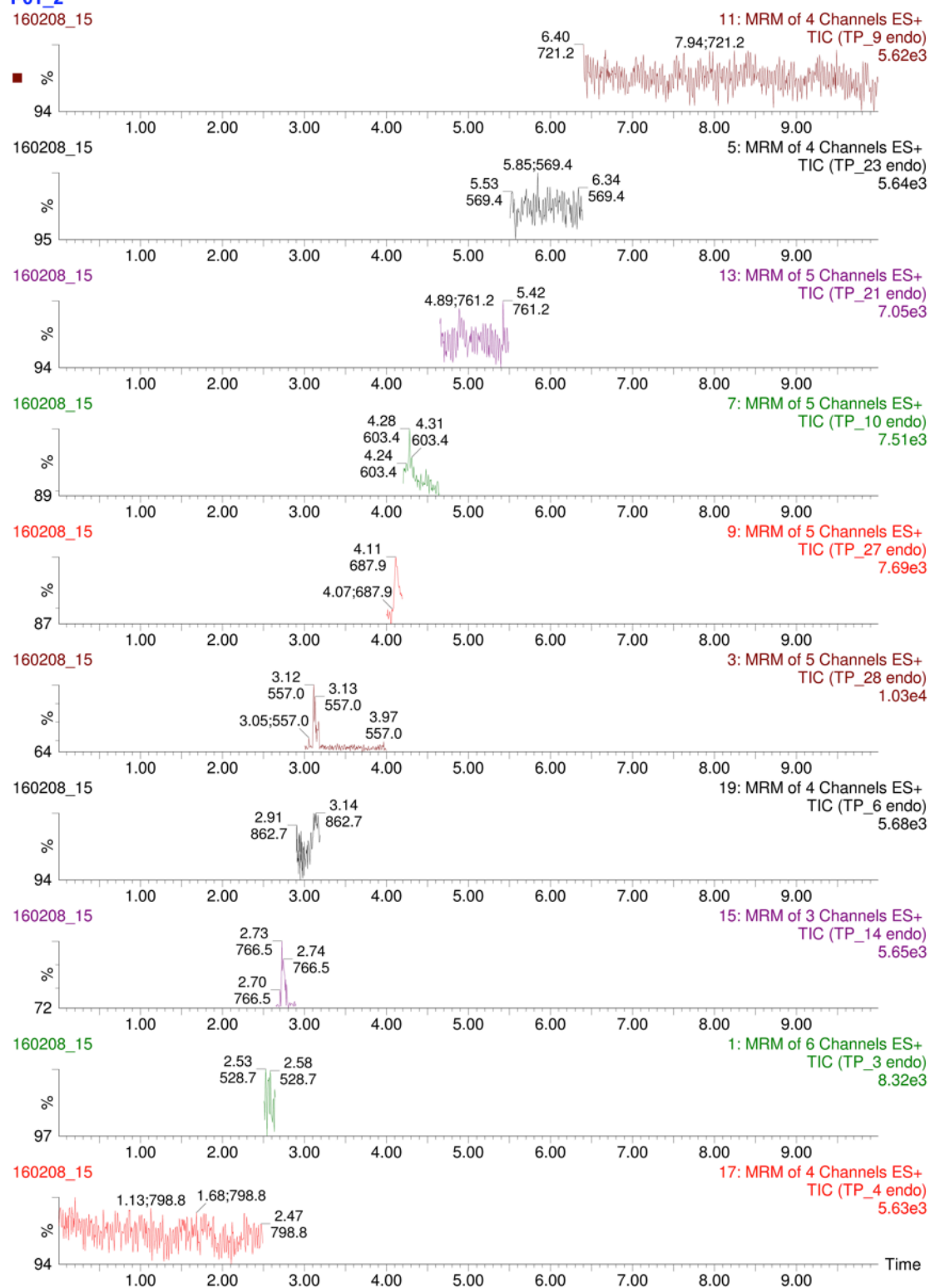
b) Gradient 1; hPTP view



c) Gradient 2, endogenous (*T. pallidum*) PTP view

P01\_2

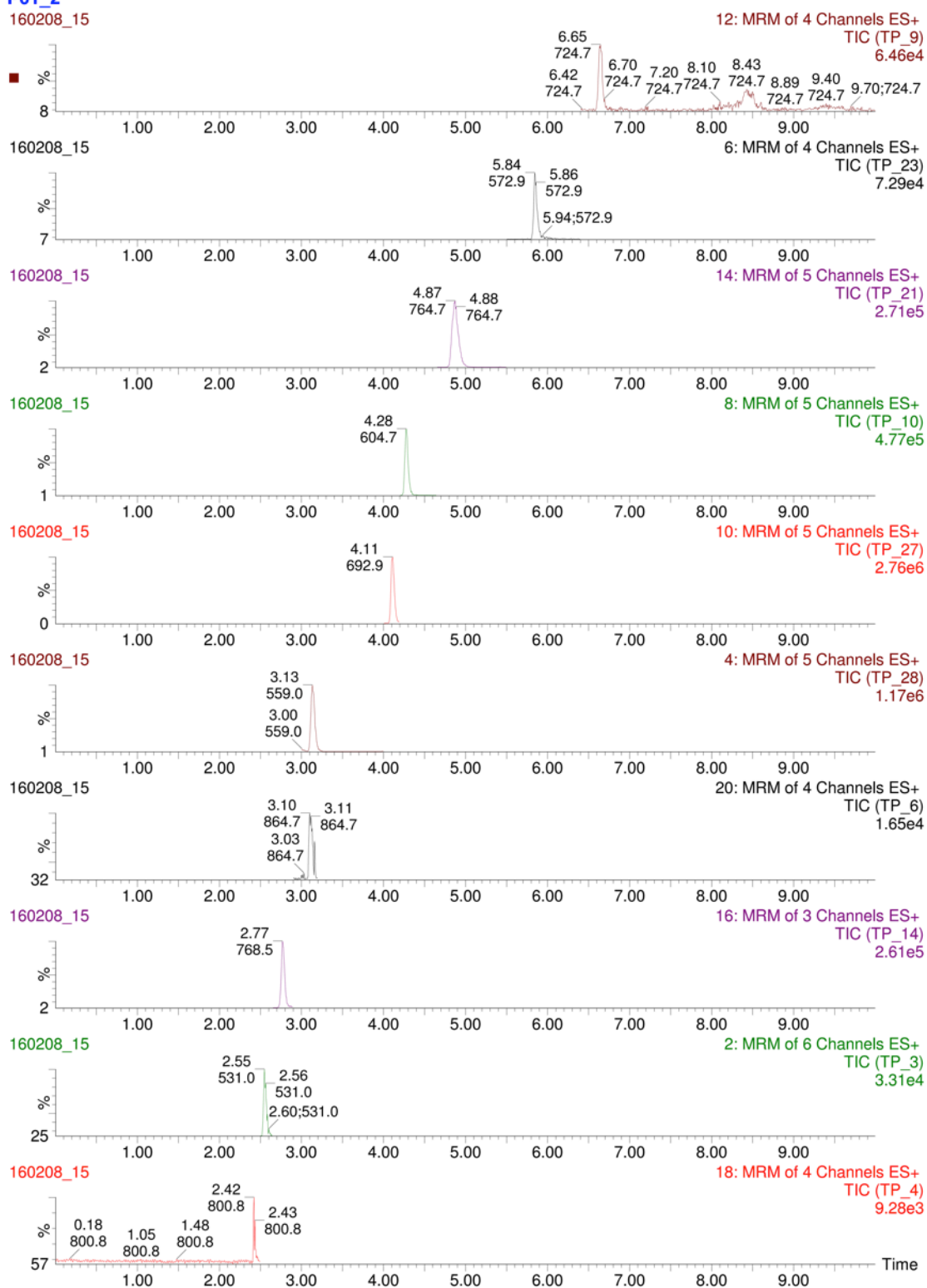
160208\_15



# d) Gradient 2; hPTP view

P01\_2

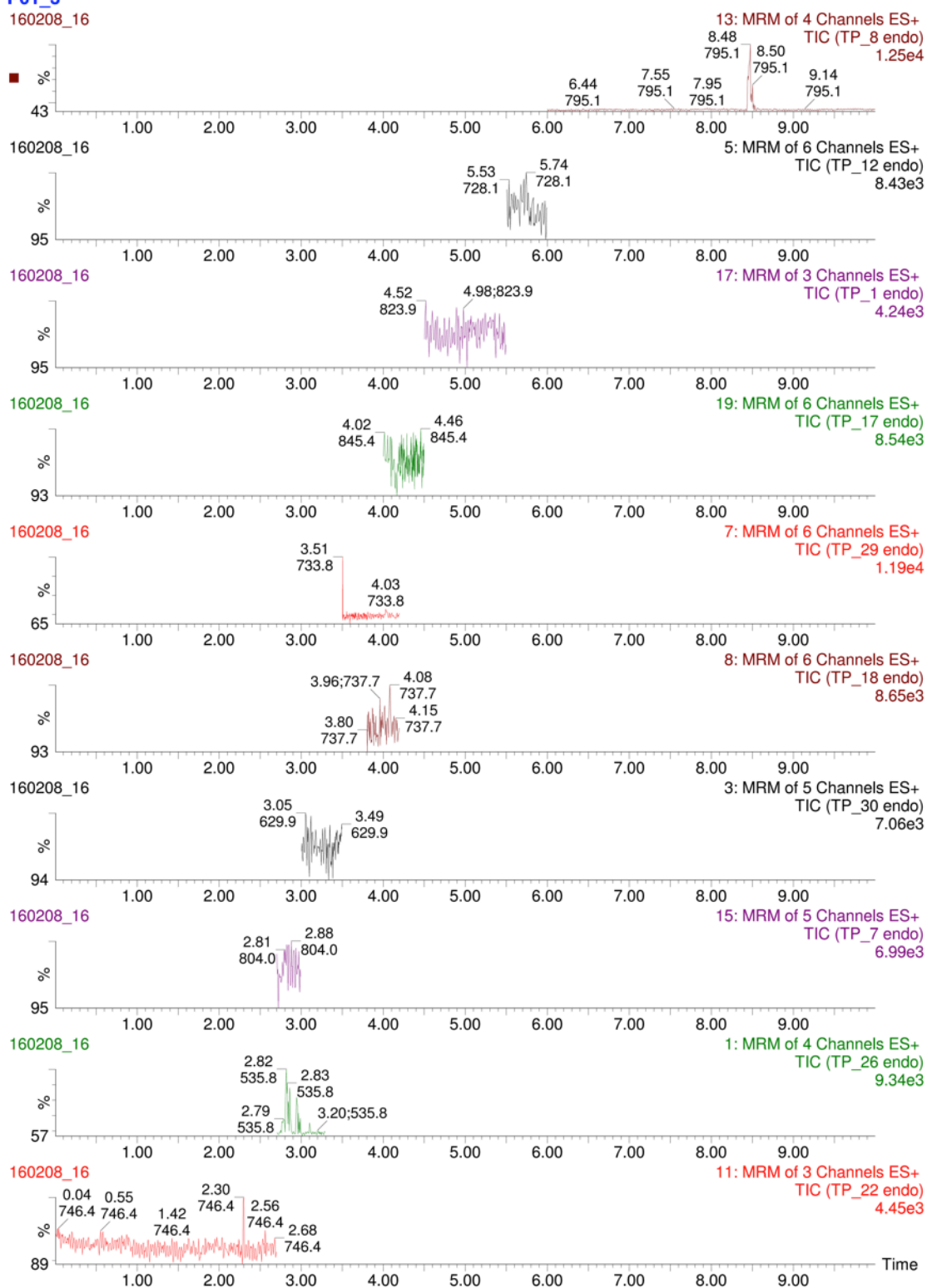
160208\_15



e) Gradient 3; endogenous (*T. pallidum*) PTP view

P01\_3

160208\_16



f) Gradient 3; hPTP view

P01\_3

160208\_16

