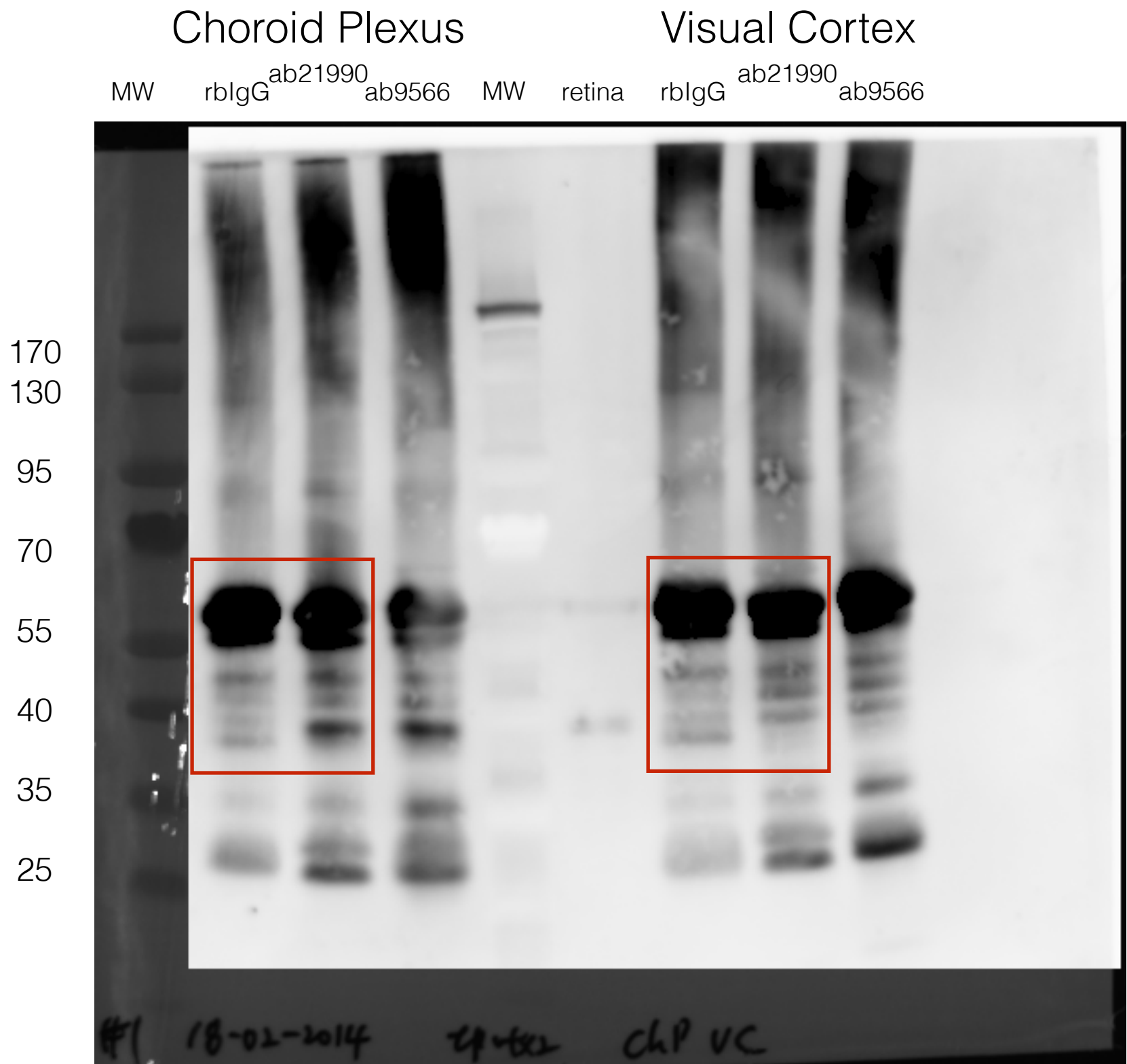


Full Blot Figure 2A

Full membrane of chemiluminescent western blot used in Figure 2A shows immunoprecipitation (rabbit IgG, anti-Otx (ab21990), and anti-Otx (ab9566)) of choroid plexus and visual cortex lysates. An extract of retina serves as Otx2 migration control. The membrane is overlaid on white light picture of molecular weight markers. Red outlines correspond to panels in Figure 2A.



#1 18-02-2014 t9-tx2 ChP VC

Full Blot Figure 2C

Chemiluminescent western blot used in Figure 2C shows full-length membrane with overlaid molecular weight markers. Red outline corresponds to panel in Figure 2C.

